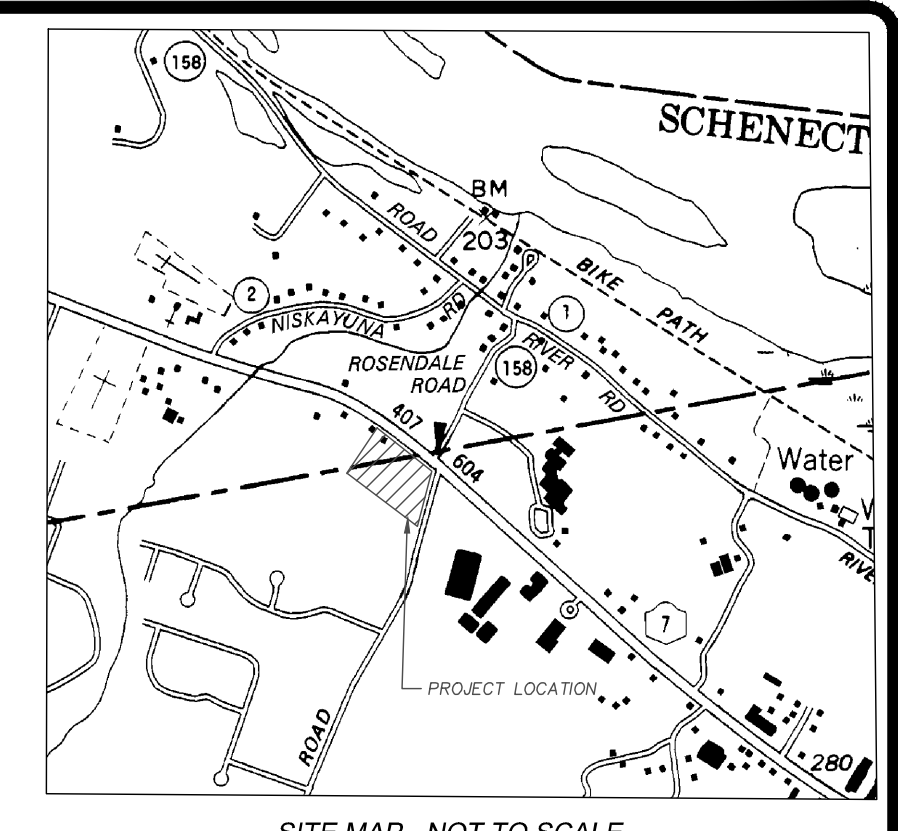
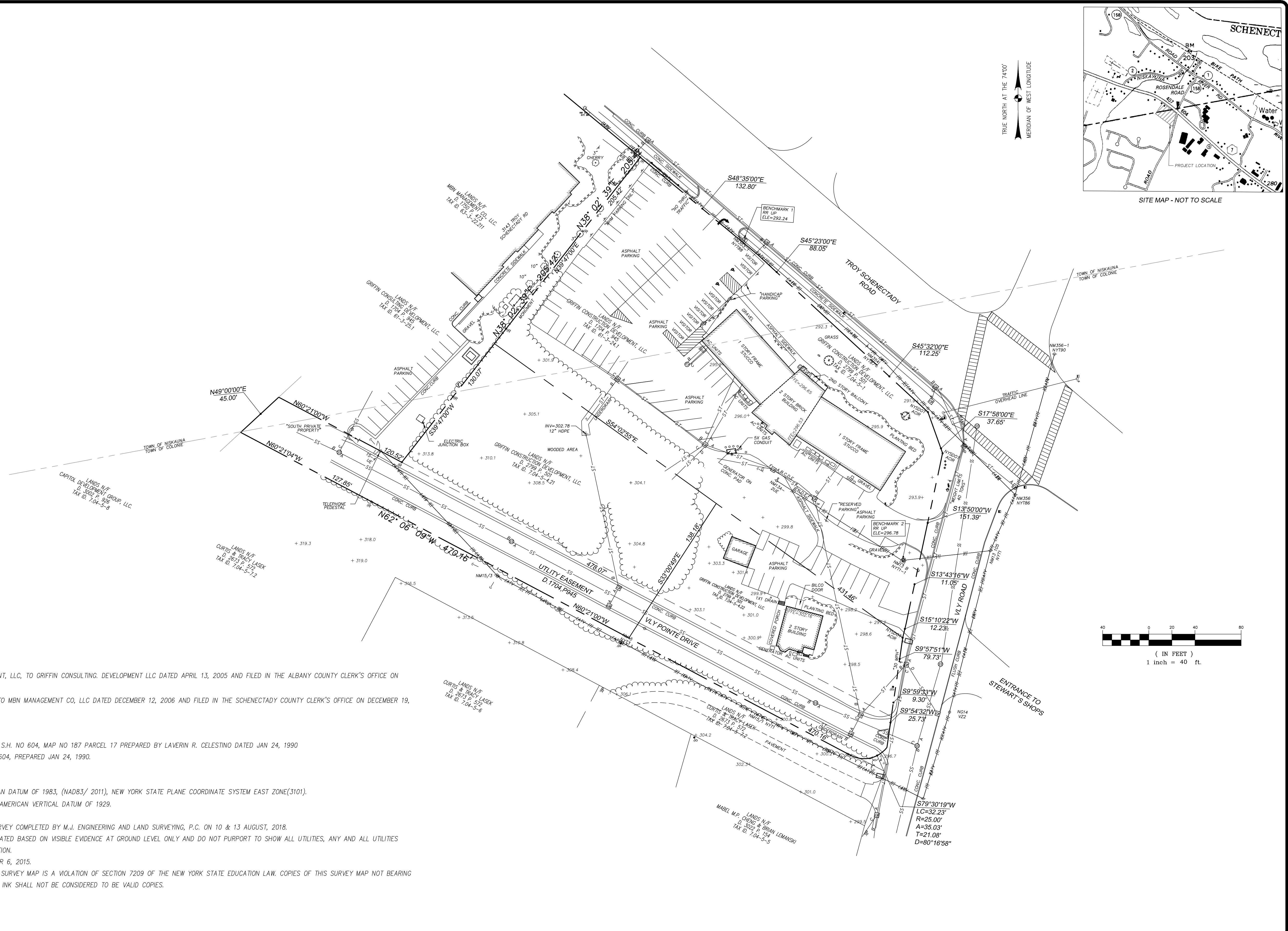
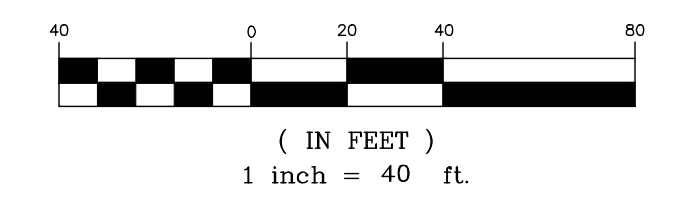


LEGEND	
CATCH BASIN	
SANITARY MANHOLE	
FIRE HYDRANT	
GATE VALVE	
DECIDUOUS TREE	
SHRUBS	
UTILITY TELEPHONE BOX	
LIGHT POLE	
DOUBLE POST SIGN	
SINGLE POST SIGN	
UTILITY POLE WITH LIGHT	
BENCHMARK	
HANDICAP SIGN	
ELECTRIC METER	
MONUMENT POINT	
ELECTRIC VALVE	
BOLLARD	
GAS VENT	
GUYWIRE	
LIGHT POST	
MAILBOX	
FLAG POLE	
TRAFFIC CONTROL BOX	
PEDESTRIAN CROSSING SYMBOL	
GAS METER	
GAS MARKOUT	
IRON ROD MARKER	
IRON PIPE MARKER	
UTILITY POLE	
UNKNOWN VALVE	
HOUSE WATER SERVICE	
IRRIGATION BOX	
FRONT GROUND LIGHT	
TRANSFORMER	
STORM LINE	
SANITARY LINE	
SITE VEGETATION	
4" VINYL FENCE	
GAS LINE	
PLANTING BED	
OVERHEAD POWER LINE	
OVERHEAD TELEPHONE LINE	
OVERHEAD CABLE LINE	



TRUE NORTH AT THE 74°00'
MERIDIAN OF WEST LONGITUDE



DEED REFERENCES:

- DEED FROM NISKAYUNA PROFESSIONAL DEVELOPMENT, LLC, TO GRIFFIN CONSULTING, DEVELOPMENT LLC DATED APRIL 13, 2005 AND FILED IN THE ALBANY COUNTY CLERK'S OFFICE ON APRIL 29, 2005 IN BOOK 2799 PAGE 501.
- DEED FROM NISKAYUNA PROFESSIONAL OFFICE, LLC, TO MBN MANAGEMENT CO, LLC DATED DECEMBER 12, 2006 AND FILED IN THE SCHENECTADY COUNTY CLERK'S OFFICE ON DECEMBER 19, 2006 IN BOOK 1750 PAGE 473.

MAP REFERENCES:

- APPROPRIATION MAP TROY-SCHENECTADY, PART 3, S.H. NO 604, MAP NO 187 PARCEL 17 PREPARED BY LAVERIN R. CELESTINO DATED JAN 24, 1990
- CLAIM MAP, TROY-SCHENECTADY PART 3, S.H. NO 604, PREPARED JAN 24, 1990.

GENERAL NOTES:

- COORDINATES ARE REFERENCED TO NORTH AMERICAN DATUM OF 1983, (NAD83/2011), NEW YORK STATE PLANE COORDINATE SYSTEM EAST ZONE(3101).
- THE VERTICAL DATUM REFERENCED TO THE NORTH AMERICAN VERTICAL DATUM OF 1929.
- CONTOUR INTERVAL = 1 FOOT.
- INFORMATION SHOWN HEREON IS FROM A FIELD SURVEY COMPLETED BY M.J. ENGINEERING AND LAND SURVEYING, P.C. ON 10 & 13 AUGUST, 2018.
- UNDERGROUND UTILITIES SHOWN HEREON WERE LOCATED BASED ON VISIBLE EVIDENCE AT GROUND LEVEL ONLY AND DO NOT PURPORT TO SHOW ALL UTILITIES, ANY AND ALL UTILITIES SHOWN ARE SUBJECT TO VERIFICATION BY EXCAVATION.
- SURVEY FIELD WORK WAS COMPLETED ON NOVEMBER 6, 2015.
- UNAUTHORIZED ALTERATIONS OR ADDITION TO THIS SURVEY MAP IS A VIOLATION OF SECTION 7209 OF THE NEW YORK STATE EDUCATION LAW. COPIES OF THIS SURVEY MAP NOT BEARING THE LAND SURVEYORS SEAL AND SIGNED WITH RED INK SHALL NOT BE CONSIDERED TO BE VALID COPIES.

SUBMITTAL / REVISIONS					
No.	DATE	DESCRIPTION	BY	REVIEWED BY:	DATE
1					

PROJ. MANAGER: JGM
 CHIEF DESIGNER:
 DESIGNED BY:
 DRAWN BY: NA
 CHECKED BY: MJF

DATE	DATE

THE ALTERATION OF THIS MATERIAL IN ANY WAY, UNLESS DONE UNDER THE DIRECTION OF A COMPARABLE PROFESSIONAL, (I.E.) ARCHITECT FOR AN ARCHITECT, ENGINEER FOR AN ENGINEER OR LANDSCAPE ARCHITECT FOR A LANDSCAPE ARCHITECT, IS A VIOLATION OF THE NEW YORK STATE EDUCATION LAW AND/OR REGULATIONS AND IS A CLASS 'A' MISDEMEANOR.

Engineering and Land Surveying, P.C.
 1533 Crescent Road - Clifton Park, NY 12065

BOUNDARY AND TOPOGRAPHY SURVEY
 FOR
 1222 TROY SCHENECTADY ROAD
 T/O COLONIE & NISKAYUNA SCHENECTADY & ALBANY COUNTY

SCALE: 1" = 40'
 CONTRACT No.:
 MJ PROJ. No.: MJ972.29
 DATE: 09/21/2018