

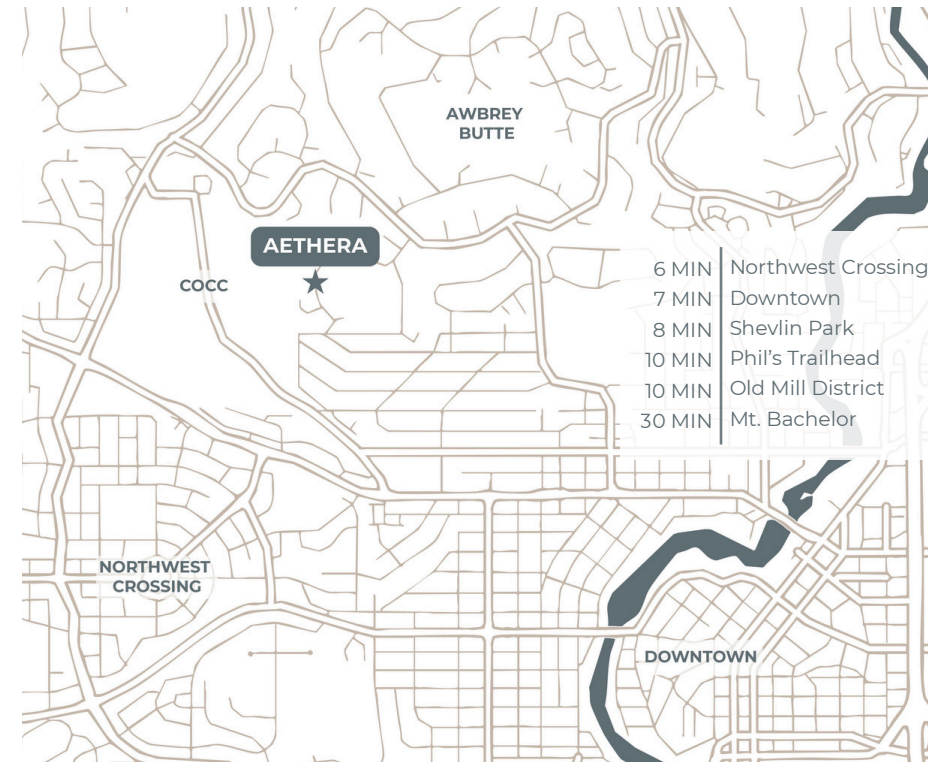
Aethera

2020 NW Glassow Drive
Designed for Living. Crafted for Life.
 Awbrey Butte · Bend, Oregon

Cascade Hasson | **Sotheby's**
 INTERNATIONAL REALTY

Aethera

WINSOME
 CONSTRUCTION



Represented by
Wendy Stassens

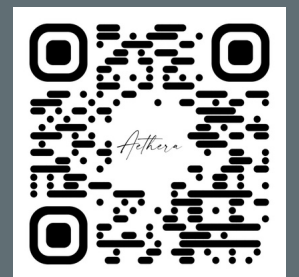
Licensed Principal Broker in Oregon

503.560.5189

Text or Call

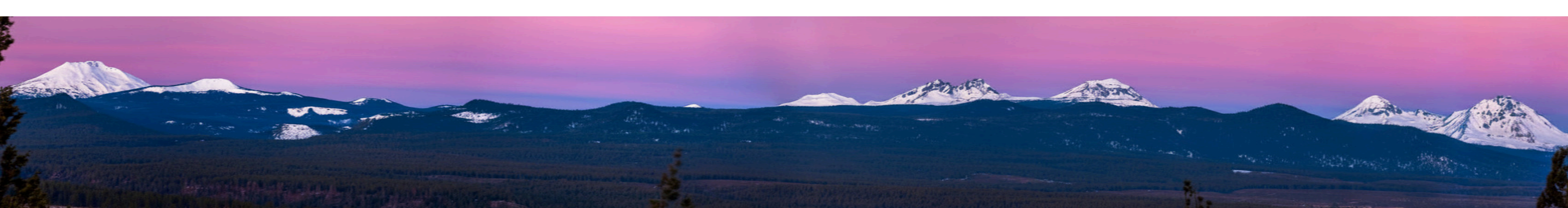


AetheraBend.com



Each Office is Independently Owned and Operated. All Brokers Licensed in the State of Oregon. Equal Housing Opportunity.

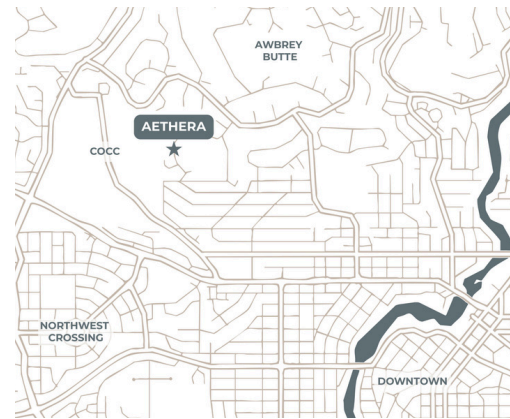
Cascade Hasson Sotheby's International Realty is licensed in Oregon and Washington and fully supports the principles of the Fair Housing Act. We are committed to an inclusive marketing program free from discrimination based on race, color, religion, sex, disability, familial status, national origin, marital status, source of income, sexual orientation, or gender identity. All information is deemed reliable but not guaranteed and is subject to change, error, or withdrawal without notice. All measurements are approximate.



Connected to everything.

Removed from the noise.

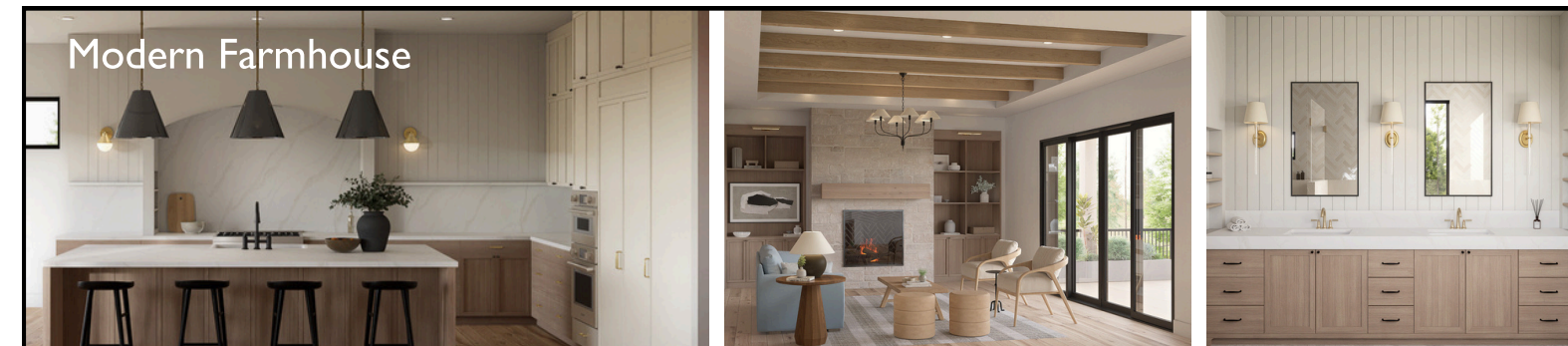
- 6 MIN Northwest Crossing
- 7 MIN Downtown
- 8 MIN Shevlin Park
- 10 MIN Phil's Trailhead
- 10 MIN Old Mill District
- 30 MIN Mt. Bachelor



Aethera Highlights

- Limited collection of 24 homes on Awbrey Butte
- Panoramic Cascade Mountain views
- Thoughtfully designed for privacy, light, and openness
- Architecturally curated homes, inside and out
- Curated personalization experience
- Built by Winsome Construction
- Healthy indoor air and modern building practices
- Durable, high-quality materials
- Energy-efficient design for year-round comfort
- Zoned in Summit School District
- Phased releases with early buyer opportunities

Choose From Four Curated Design Collections



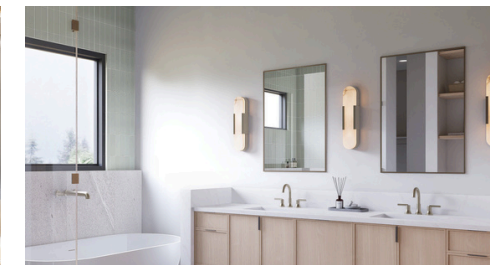
Now Selling

Skyridge on Lot 1

	Price	Bed	Bath	Living Area (Sq. Ft.)	Garage Size	Lot Size (Sq. Ft.)
Skyridge on Lot 1	\$3,390,000	4	4.5	3,534	3 Car 905 Sq. Ft.	20,267
Aspen on Lot 11	\$2,799,000	3	2.5	3,243	2 Car 541 Sq. Ft.	5,326
Crestline on Lot 17	\$2,599,000	3	2.5	3,049	2 Car 500 Sq. Ft.	7,536

Home Highlights

- Designed for Healthy Indoor Air
- Built with Durable, Quality Materials
- Energy-Efficient Comfort
- Built by Winsome Construction
- Mountain Views
- Architecturally Designed
- Upgrade Options Available



Lower Level



Upper Level

Price: \$3,390,000
Bedrooms: 4
Bathrooms: 4.5

Sq. Ft.: 3,534 Sq. Ft. living area, plus an additional 905 Sq. Ft. garage

Lot Size: 20,267 Sq. Ft.

Property Highlights

- Spacious Three Car Garage
- High Desert Scandinavian Design Style Showcased
- Dining Room with Mountain Views from The Three Sisters to Mt. Adams
- Main-Level Primary Suite
- Freestanding Tub and Curbless, Tiled Walk-in Shower in Primary Bath
- Three Upper Bedrooms, with Two Private En-Suite Baths
- Dedicated Main-Level Office
- Upper-Level Bonus Room
- Walk-In Pantry & Open-Concept Kitchen
- Hardwood Floors, Premium Appliances & Custom Cabinetry
- Covered Outdoor Living Space

Aspen on Lot 11



Crestline on Lot 17



Property Highlights

- Two-Car Garage
- Modern Farmhouse Interior Design Style Showcased
- Great Room with Stone Fireplace
- Freestanding Tub and Curbless Walk-in Shower in Primary Bath
- Chef's Kitchen with Hidden Pantry and Custom Cabinetry
- Dedicated Main-Level Office
- Upper-Level Bonus Room
- Hardwood Floors, Premium Appliances & Custom Cabinetry
- Covered Outdoor Living Space



Lower Level



Upper Level

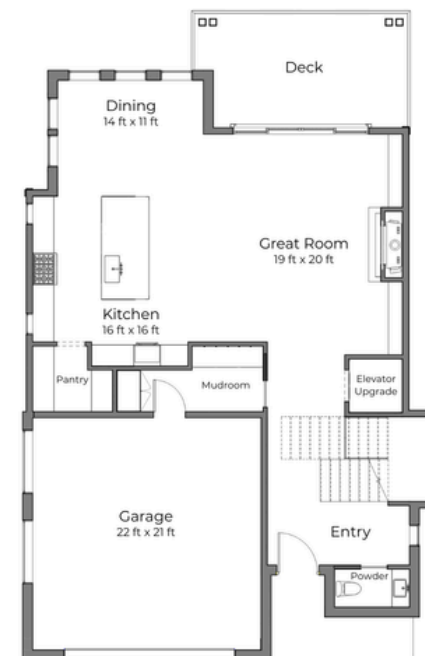
Price: \$2,799,000

Bedrooms: 3

Bathrooms: 2.5

Sq. Ft.: 3,243 Sq. Ft. living area, plus an additional 541 Sq. Ft. garage

Lot Size: 5,326 Sq. Ft.



Lower Level



Upper Level

Price: \$2,599,000

Bedrooms: 3

Bathrooms: 2.5

Sq. Ft.: 3,049 Sq. Ft. living area, plus an additional 500 Sq. Ft. garage

Lot Size: 7,536 Sq. Ft.

Property Highlights

- Two-Car Garage
- Mountain Views, from Mt. Bachelor to Mt. Hood
- Rustic Elegance Interior Design Style Showcased
- Hardwood Floors, Premium Appliances & Custom Cabinetry
- Great Room with Stone Fireplace
- Large Deck with Mountain Views
- Chef's Kitchen with Walk-In Pantry and Premium Appliances