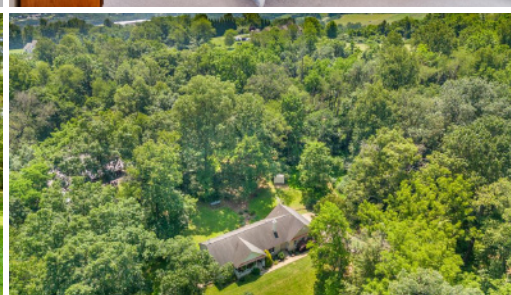




2323 MICHAEL RD

Myersville, MD 21773



Bobbi Prescott
RE/MAX Results

301-514-6163 (direct) 301.698.5005 (broker)
bobbiprescott@gmail.com



3 beds



3 baths



2,600 sq ft



Year Built: 1997



See more information at keycitymedia.hd.pics/2277267 All information deemed reliable but not guaranteed.





Private, all-brick Rancher on nearly six acres!

Welcome to 2323 Michael Road—a private, all-brick rancher on nearly six wooded acres that checks every box: privacy, timeless construction, modern updates, and an unbeatable location within the Middletown school district. Tucked away in a quiet corner of Myersville, this 3-bedroom, 3-bath retreat offers the perfect blend of comfort, functionality, and natural beauty. Built in 1997 and freshly updated with new paint and carpet, the home is move-in ready while still offering space to make it your own. Inside, you'll find hardwood floors, a spacious family room with a cozy wood stove, and an inviting eat-in kitchen with wood cabinetry, stainless steel appliances, and a large dining area—perfect for everything from casual weeknight meals to festive gatherings. A separate mudroom, propane heat backup, and oversized side-load garage add everyday practicality. The walkout lower level includes a full bath with soaking tub, a partially finished rec room with exterior access, and a large storage area with its own outside entrance—ideal for a future guest suite, home gym, hobby space, or office. And while the interior offers warmth and everyday ease, it's the setting that truly sets this home apart. Nearly six wooded acres surround you with natural beauty, offering quiet seclusion, abundant wildlife, and endless possibilities to enjoy the outdoors. Sip your morning coffee on the covered front porch, spend afternoons under the trees, gather with friends around the fire pit, or blaze your own trail through the woods. Every inch of the property invites you to slow down, breathe deep, and reconnect with nature. Additional highlights include a paved driveway with ample parking and a location that balances the serenity of the countryside with quick access to I-70 and nearby amenities. Tucked into the small Squirrel Wood community, this home is a peaceful escape—and a smart investment in both lifestyle and location. Homes like this don't come along often. Come see what makes 2323 Michael Road such a rare find.