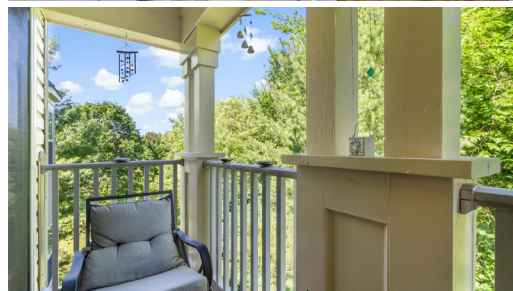
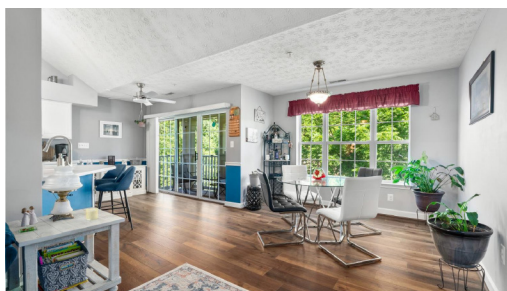




6344 SPRINGWATER TERR #1142

Frederick, MD 21701



Bobbi Prescott
RE/MAX Results

301.514.6163 (d) 301.698.5005 (o)

www.bobbiprescott.com



2 beds



2 baths



1,242 sq ft

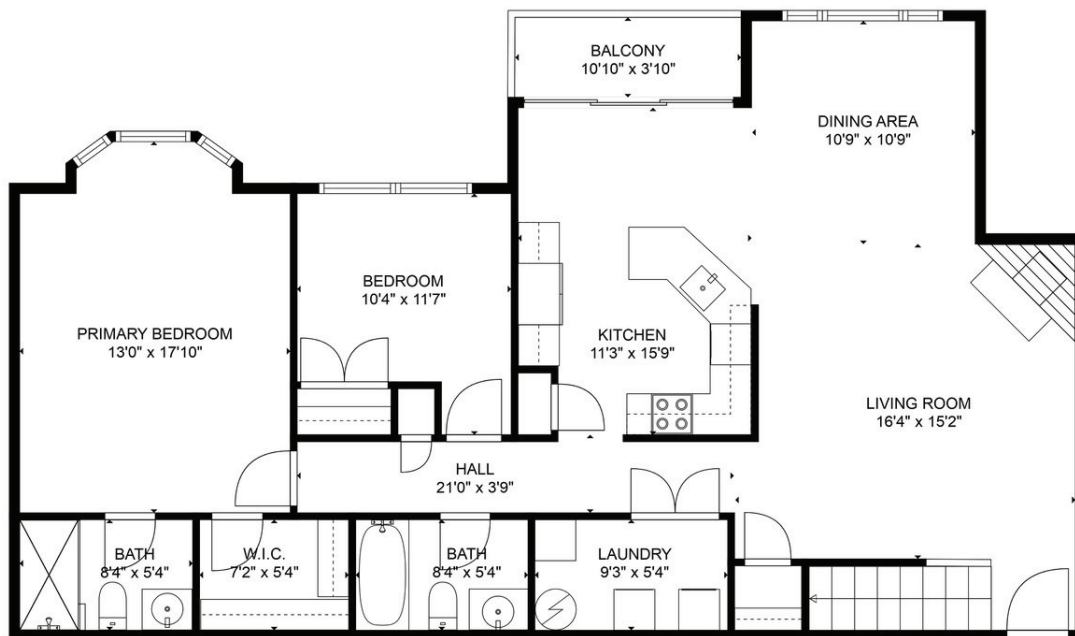


Year Built: 1998



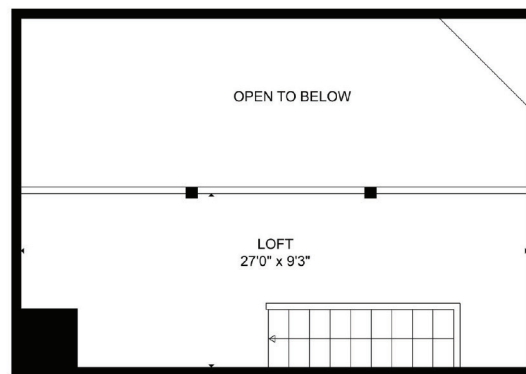
See more information at keycitymedia.hd.pics/2302267 All information deemed reliable but not guaranteed.





TOTAL: 1459 sq. ft
 FLOOR 1: 1209 sq. ft, FLOOR 2: 250 sq. ft
 EXCLUDED AREAS: BALCONY: 42 sq. ft, OPEN TO BELOW: 242 sq. ft
 WALLS: 128 sq. ft

For reference only. Actual dimensions or details may vary.



Private Balcony, Peaceful Wooded Views

Welcome to 6344 Springwater Terrace, Unit 1142—an updated, larger rear penthouse unit in the highly desirable Spring Ridge community and Oakdale School District! This light-filled 2-bedroom, 2-bath condo with a spacious loft offers 1,242 square feet of comfortable living space and overlooks a peaceful wooded area. Located on the top floor, it features soaring vaulted ceilings, a cozy gas fireplace, and a west-facing balcony—perfect for enjoying sunsets and nature views. The home has been freshly painted and updated with new luxury vinyl plank flooring, kitchen countertops, cabinet hardware, lighting fixtures, and a new condenser fan in the HVAC system. The open-concept layout includes a generous living area, dining space, and versatile loft—ideal for a home office, guest space, or media room. Enjoy all the amenities Spring Ridge has to offer, including 4 community pools, tennis and basketball courts, playgrounds, walking trails, and an on-site shopping center. Commuters will love the location—just minutes from Downtown Frederick, I-70, I-270, and Route 15. Eligible for 100% financing through USDA with no money down for qualified buyers—and no city taxes! Don't miss this opportunity to own one of the best condo layouts in Spring Ridge.