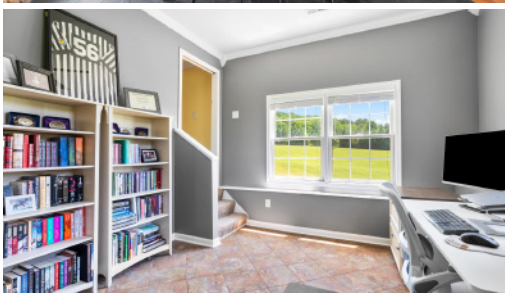
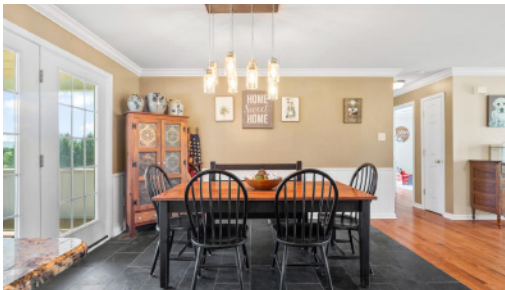




20627 GUARD CT

Rohrersville, MD 21779



Bobbi Prescott
RE/MAX Results

301-514-6163 (direct) 301-698-5005 broker
bobbiprescott@gmail.com



4 beds



3 baths



2,800 sq ft

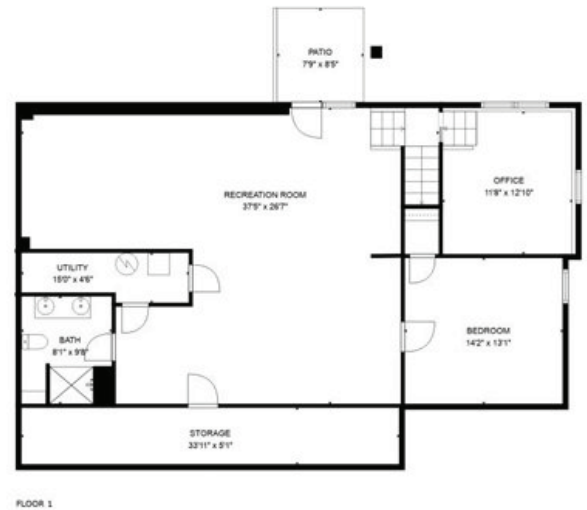


Year Built: 2004



See more information at keycitymedia.hd.pics/2277263 All information deemed reliable but not guaranteed.





Country Charm, Modern Comforts, Big Views

Welcome to 20627 Guard Court – a peaceful country retreat in scenic Rohrersville, MD. Set on 3 acres and surrounded by scenic open land and mountain vistas, this thoughtfully designed rancher offers over 2,800 finished square feet, plus an oversized 620 sq ft side-load garage with a separate side entrance and a wide driveway—ideal for guests, hobbies, or extra vehicles. Inside, you'll find hardwood floors, a spacious eat-in kitchen with granite countertops, and main-level laundry located just off the kitchen for convenience. The home features 3 bedrooms on the main level, including a private en-suite, along with a full hall bath for the secondary bedrooms. The walkout lower level is filled with natural light and features 12-foot ceilings, a large rec room, a full bath, and two additional rooms—ideal as bedrooms, guest space, or a home office/den. And with beautiful views from nearly every window—even on the lower level—you'll stay connected to the natural surroundings year-round. Outdoor living is equally inviting, featuring a charming front porch, a rear deck, and a screened-in porch that overlooks the expansive backyard and offers panoramic mountain views. The current owners, especially, loved sitting here, soaking in the peaceful sunsets over the Blue Ridge. Just minutes from the MARC train and the Appalachian Trail, this home blends the best of country living with easy access to adventure and commuting. With its open skies, tall ceilings, natural light, and a setting that's equal parts functional and inspiring, this is more than a home. It's a retreat you'll never want to leave.