

Home report

1742 Ivy Pine Court Northeast, Buford, Gwinnett County, Georgia, United States, 30519



Total Area: 3017 sq. ft


Floor 1: 1599 sq. ft, Floor 2: 1418 sq. ft

Excluded: Garage 369 sq. ft, Covered patio 195 sq. ft, Fireplace 12 sq. ft, Low ceiling 23 sq. ft, Utility 10 sq. ft, Walls: 220 sq. ft

Property summary

 **2** Floors

 **4** Bedrooms

 **2** Bathrooms

Home report

**1742 Ivy Pine Court Northeast, Buford, Gwinnett County,
Georgia, United States, 30519**



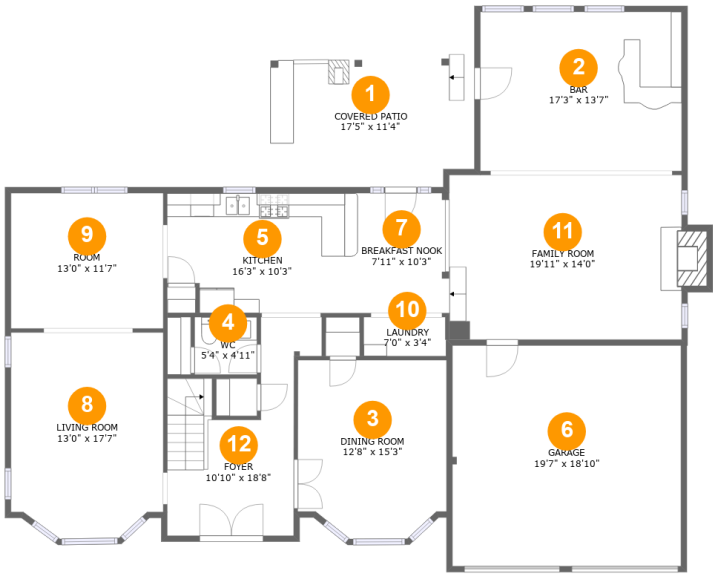
1
Half baths



1
Garages

Home report

1742 Ivy Pine Court Northeast, Buford, Gwinnett County, Georgia, United States, 30519



Room dimensions

Floor 1 Total:1599sqft Excluded: 576sqft

| # | | Max Dimensions | sqft | Included |
|----|----------------|----------------|------------|----------|
| 1 | Covered Patio | 17'5" x 11'4" | 195 sq. ft | No |
| 2 | Bar | 17'3" x 13'7" | 234 sq. ft | Yes |
| 3 | Dining Room | 12'8" x 15'3" | 183 sq. ft | Yes |
| 4 | WC | 5'4" x 4'11" | 26 sq. ft | Yes |
| 5 | Kitchen | 16'3" x 10'3" | 159 sq. ft | Yes |
| 6 | Garage | 19'7" x 18'10" | 369 sq. ft | No |
| 7 | Breakfast Nook | 7'11" x 10'3" | 81 sq. ft | Yes |
| 8 | Living Room | 13'0" x 17'7" | 218 sq. ft | Yes |
| 9 | Room | 13'0" x 11'7" | 151 sq. ft | Yes |
| 10 | Laundry | 7'0" x 3'4" | 23 sq. ft | Yes |
| 11 | Family Room | 19'11" x 14'0" | 290 sq. ft | Yes |

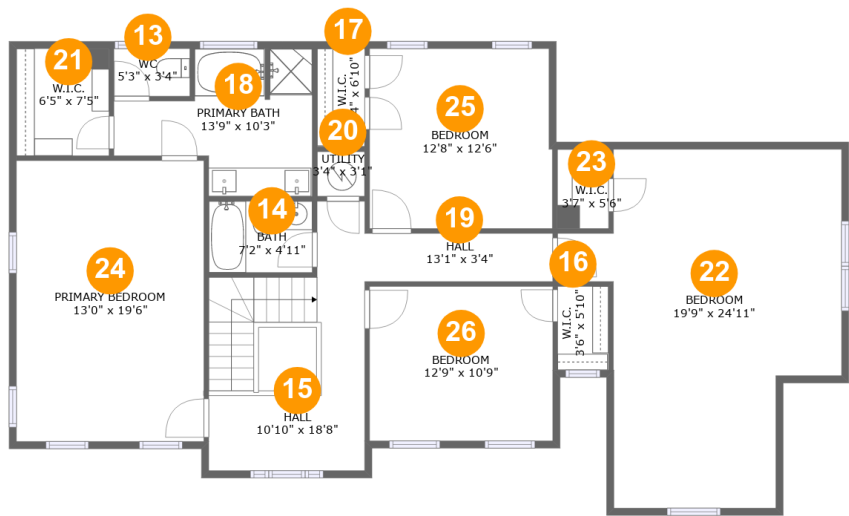
Home report

1742 Ivy Pine Court Northeast, Buford, Gwinnett County,
Georgia, United States, 30519

| # | | Max Dimensions | sqft | Included |
|----|-------|----------------|------------|----------|
| 12 | Foyer | 10'10" x 18'8" | 154 sq. ft | Yes |

Home report

1742 Ivy Pine Court Northeast, Buford, Gwinnett County,
Georgia, United States, 30519



Room dimensions

Floor 2 Total:1418sqft Excluded: 33sqft

| # | | Max Dimensions | sqft | Included |
|----|--------------|----------------|------------|----------|
| 13 | WC | 5'3" x 3'4" | 17 sq. ft | Yes |
| 14 | Bath | 7'2" x 4'11" | 36 sq. ft | Yes |
| 15 | Hall | 10'10" x 18'8" | 163 sq. ft | Yes |
| 16 | W.I.C. | 3'6" x 5'10" | 21 sq. ft | Yes |
| 17 | W.I.C. | 3'4" x 6'10" | 23 sq. ft | Yes |
| 18 | Primary Bath | 13'9" x 10'3" | 101 sq. ft | Yes |
| 19 | Hall | 13'1" x 3'4" | 44 sq. ft | Yes |
| 20 | Utility | 3'4" x 3'1" | 10 sq. ft | No |
| 21 | W.I.C. | 6'5" x 7'5" | 48 sq. ft | Yes |
| 22 | Bedroom | 19'9" x 24'11" | 343 sq. ft | Yes |
| 23 | W.I.C. | 3'7" x 5'6" | 20 sq. ft | Yes |

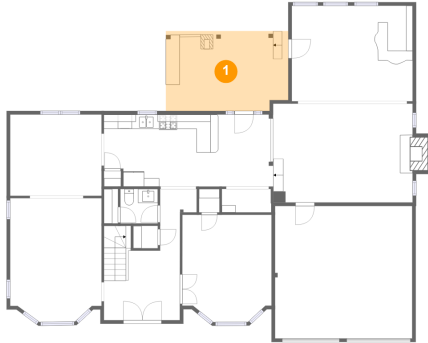
Home report

1742 Ivy Pine Court Northeast, Buford, Gwinnett County,
Georgia, United States, 30519

| # | | Max Dimensions | sqft | Included |
|----|-----------------|----------------|------------|----------|
| 24 | Primary Bedroom | 13'0" x 19'6" | 254 sq. ft | Yes |
| 25 | Bedroom | 12'8" x 12'6" | 157 sq. ft | Yes |
| 26 | Bedroom | 12'9" x 10'9" | 136 sq. ft | Yes |

1742 Ivy Pine Court Northeast, Buford, Gwinnett County,
Georgia, United States, 30519

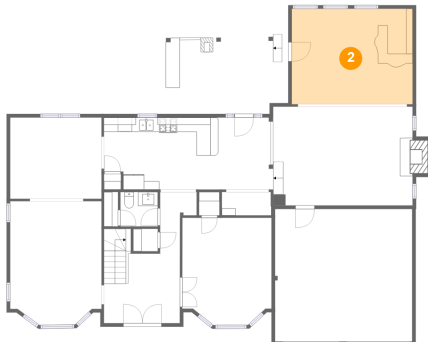
1 Floor 1 - Covered Patio



Max Dimensions: 17'5" x
11'4"
Calculated Area: 195 sq. ft
Included: No

Heated: No
Finished: Yes
Enclosed: No
Contiguous:
Yes
Permitted: Yes
Wet space: No
Addition: No
Conversion: No

2 Floor 1 - Bar

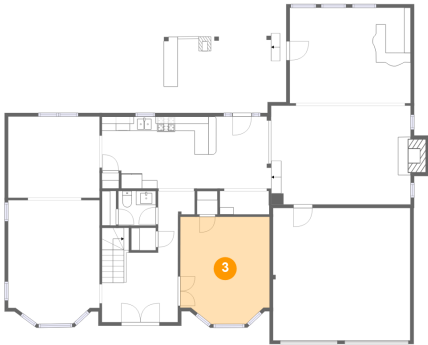


Max Dimensions: 17'3" x
13'7"
Calculated Area: 234 sq. ft
Included: Yes

Heated: Yes
Finished: Yes
Enclosed: Yes
Contiguous:
Yes
Permitted: Yes
Wet space: No
Addition: No
Conversion: No

1742 Ivy Pine Court Northeast, Buford, Gwinnett County,
Georgia, United States, 30519

3 Floor 1 - Dining Room



Max Dimensions: 12'8" x 15'3"
Calculated Area: 183 sq. ft
Included: Yes

Heated: Yes
Finished: Yes
Enclosed: Yes
Contiguous: Yes
Permitted: Yes
Wet space: No
Addition: No
Conversion: No

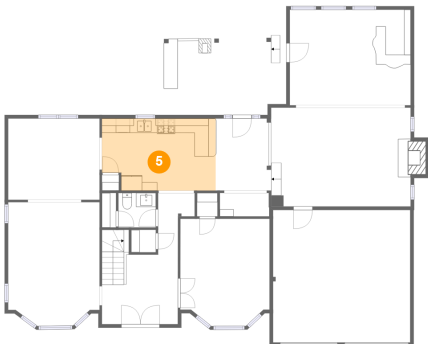
4 Floor 1 - WC



Max Dimensions: 5'4" x 4'11"
Calculated Area: 26 sq. ft
Included: Yes

Heated: Yes
Finished: Yes
Enclosed: Yes
Contiguous: Yes
Permitted: Yes
Wet space: Yes
Addition: No
Conversion: No

5 Floor 1 - Kitchen



Max Dimensions: 16'3" x 10'3"
Calculated Area: 159 sq. ft
Included: Yes

Heated: Yes
Finished: Yes
Enclosed: Yes
Contiguous: Yes
Permitted: Yes
Wet space: No
Addition: No
Conversion: No

1742 Ivy Pine Court Northeast, Buford, Gwinnett County,
Georgia, United States, 30519

6 Floor 1 - Garage



Max Dimensions: 19'7" x 18'10"
Calculated Area: 369 sq. ft
Included: No

Heated: No
Finished: No
Enclosed: Yes
Contiguous: Yes
Permitted: Yes
Wet space: No
Addition: No
Conversion: No

7 Floor 1 - Breakfast Nook



Max Dimensions: 7'11" x 10'3"
Calculated Area: 81 sq. ft
Included: Yes

Heated: Yes
Finished: Yes
Enclosed: Yes
Contiguous: Yes
Permitted: Yes
Wet space: No
Addition: No
Conversion: No

8 Floor 1 - Living Room

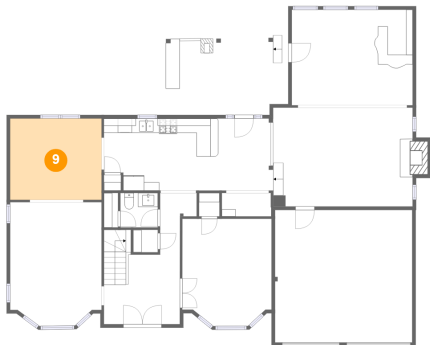


Max Dimensions: 13'0" x 17'7"
Calculated Area: 218 sq. ft
Included: Yes

Heated: Yes
Finished: Yes
Enclosed: Yes
Contiguous: Yes
Permitted: Yes
Wet space: No
Addition: No
Conversion: No

1742 Ivy Pine Court Northeast, Buford, Gwinnett County,
Georgia, United States, 30519

9 Floor 1 - Room



Max Dimensions: 13'0" x 11'7"
Calculated Area: 151 sq. ft
Included: Yes

Heated: Yes
Finished: Yes
Enclosed: Yes
Contiguous: Yes
Permitted: Yes
Wet space: No
Addition: No
Conversion: No

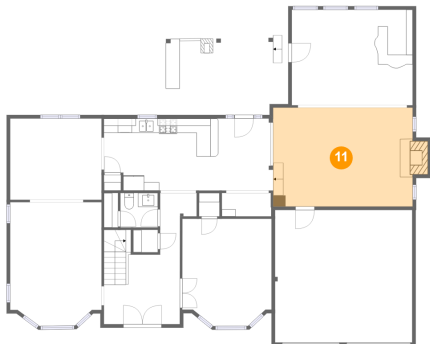
10 Floor 1 - Laundry



Max Dimensions: 7'0" x 3'4"
Calculated Area: 23 sq. ft
Included: Yes

Heated: Yes
Finished: Yes
Enclosed: Yes
Contiguous: Yes
Permitted: Yes
Wet space: No
Addition: No
Conversion: No

11 Floor 1 - Family Room



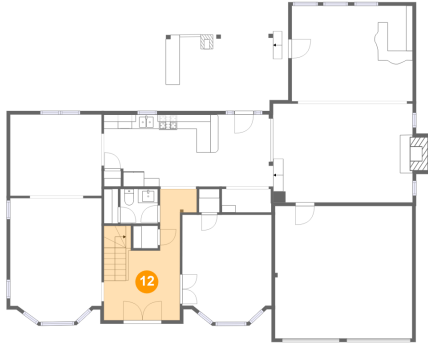
Max Dimensions: 19'11" x 14'0"
Calculated Area: 290 sq. ft
Included: Yes

Heated: Yes
Finished: Yes
Enclosed: Yes
Contiguous: Yes
Permitted: Yes
Wet space: No
Addition: No
Conversion: No

Home report

1742 Ivy Pine Court Northeast, Buford, Gwinnett County,
Georgia, United States, 30519

12 Floor 1 - Foyer



Max Dimensions: 10'10" x 18'8"
Calculated Area: 154 sq. ft
Included: Yes

Heated: Yes
Finished: Yes
Enclosed: Yes
Contiguous: Yes
Permitted: Yes
Wet space: No
Addition: No
Conversion: No

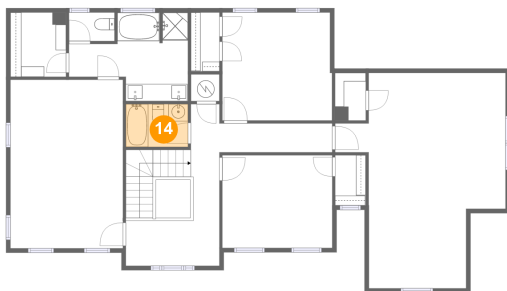
13 Floor 2 - WC



Max Dimensions: 5'3" x 3'4"
Calculated Area: 17 sq. ft
Included: Yes

Heated: Yes
Finished: Yes
Enclosed: Yes
Contiguous: Yes
Permitted: Yes
Wet space: Yes
Addition: No
Conversion: No

14 Floor 2 - Bath

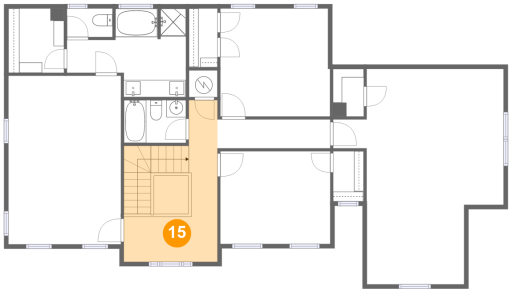


Max Dimensions: 7'2" x 4'11"
Calculated Area: 36 sq. ft
Included: Yes

Heated: Yes
Finished: Yes
Enclosed: Yes
Contiguous: Yes
Permitted: Yes
Wet space: Yes
Addition: No
Conversion: No

1742 Ivy Pine Court Northeast, Buford, Gwinnett County,
Georgia, United States, 30519

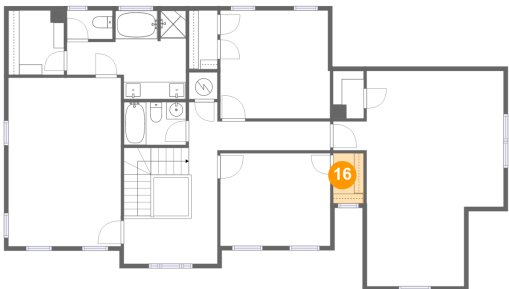
15 Floor 2 - Hall



Max Dimensions: 10'10" x 18'8"
Calculated Area: 163 sq. ft
Included: Yes

Heated: Yes
Finished: Yes
Enclosed: Yes
Contiguous: Yes
Permitted: Yes
Wet space: No
Addition: No
Conversion: No

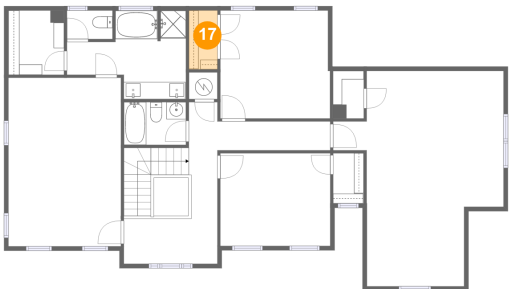
16 Floor 2 - W.I.C.



Max Dimensions: 3'6" x 5'10"
Calculated Area: 21 sq. ft
Included: Yes

Heated: Yes
Finished: Yes
Enclosed: Yes
Contiguous: Yes
Permitted: Yes
Wet space: No
Addition: No
Conversion: No

17 Floor 2 - W.I.C.

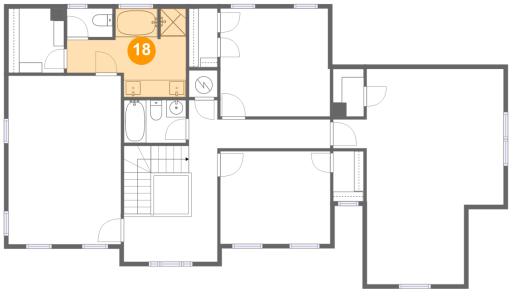


Max Dimensions: 3'4" x 6'10"
Calculated Area: 23 sq. ft
Included: Yes

Heated: Yes
Finished: Yes
Enclosed: Yes
Contiguous: Yes
Permitted: Yes
Wet space: No
Addition: No
Conversion: No

1742 Ivy Pine Court Northeast, Buford, Gwinnett County,
Georgia, United States, 30519

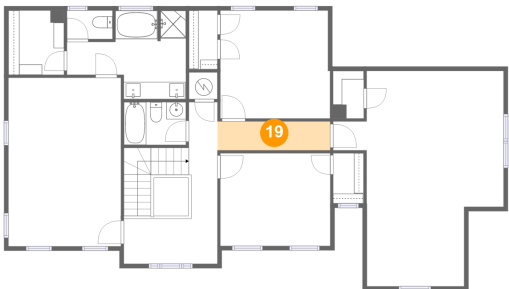
18 Floor 2 - Primary Bath



Max Dimensions: 13'9" x 10'3"
Calculated Area: 101 sq. ft
Included: Yes

Heated: Yes
Finished: Yes
Enclosed: Yes
Contiguous: Yes
Permitted: Yes
Wet space: Yes
Addition: No
Conversion: No

19 Floor 2 - Hall



Max Dimensions: 13'1" x 3'4"
Calculated Area: 44 sq. ft
Included: Yes

Heated: Yes
Finished: Yes
Enclosed: Yes
Contiguous: Yes
Permitted: Yes
Wet space: No
Addition: No
Conversion: No

20 Floor 2 - Utility



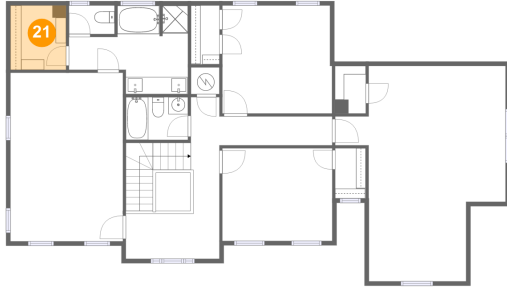
Max Dimensions: 3'4" x 3'1"
Calculated Area: 10 sq. ft
Included: No

Heated: Yes
Finished: No
Enclosed: Yes
Contiguous: Yes
Permitted: Yes
Wet space: No
Addition: No
Conversion: No

Home report

1742 Ivy Pine Court Northeast, Buford, Gwinnett County,
Georgia, United States, 30519

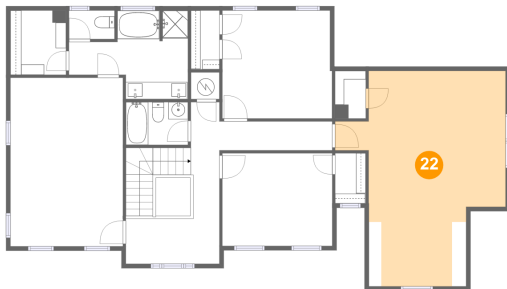
21 Floor 2 - W.I.C.



Max Dimensions: 6'5" x 7'5"
Calculated Area: 48 sq. ft
Included: Yes

Heated: Yes
Finished: Yes
Enclosed: Yes
Contiguous: Yes
Permitted: Yes
Wet space: No
Addition: No
Conversion: No

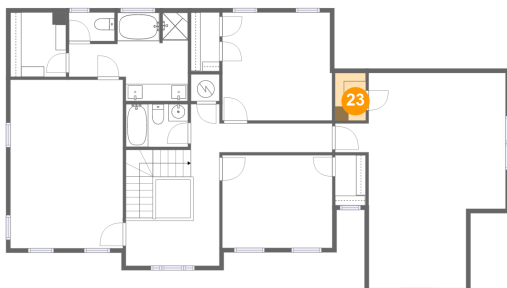
22 Floor 2 - Bedroom



Max Dimensions: 19'9" x
24'11"
Calculated Area: 343 sq. ft
Included: Yes

Heated: Yes
Finished: Yes
Enclosed: Yes
Contiguous:
Yes
Permitted: Yes
Wet space: No
Addition: No
Conversion: No

23 Floor 2 - W.I.C.



Max Dimensions: 3'7" x 5'6"
Calculated Area: 20 sq. ft
Included: Yes

Heated: Yes
Finished: Yes
Enclosed: Yes
Contiguous: Yes
Permitted: Yes
Wet space: No
Addition: No
Conversion: No

1742 Ivy Pine Court Northeast, Buford, Gwinnett County,
Georgia, United States, 30519

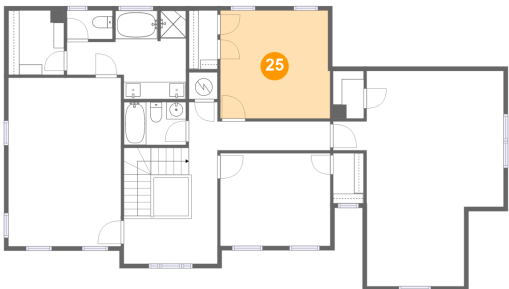
24 Floor 2 - Primary Bedroom



Max Dimensions: 13'0" x 19'6"
Calculated Area: 254 sq. ft
Included: Yes

Heated: Yes
Finished: Yes
Enclosed: Yes
Contiguous: Yes
Permitted: Yes
Wet space: No
Addition: No
Conversion: No

25 Floor 2 - Bedroom



Max Dimensions: 12'8" x 12'6"
Calculated Area: 157 sq. ft
Included: Yes

Heated: Yes
Finished: Yes
Enclosed: Yes
Contiguous: Yes
Permitted: Yes
Wet space: No
Addition: No
Conversion: No

26 Floor 2 - Bedroom



Max Dimensions: 12'9" x 10'9"
Calculated Area: 136 sq. ft
Included: Yes

Heated: Yes
Finished: Yes
Enclosed: Yes
Contiguous: Yes
Permitted: Yes
Wet space: No
Addition: No
Conversion: No