

State of Georgia



COUNTY OF FULTON OFFICE OF THE CLERK OF SUPERIOR COURT

ELECTRONIC DOCUMENT CERTIFICATION

Certification Date: 12/02/24 Book Reference: 'LAT BOOK 339 PAGE 1:
Authentication Code: WCP15-DK544-FUUT Number of Pages: 3

I, **Che' Alexander**, Clerk of Superior Court, or Deputy Clerk specified below, hereby certify that the attached page(s) is/are a true and correct copy of the document(s) enumerated herein, and that said document(s) are on file as a part of the official records of this office, of which I am the official custodian, as authorized by Georgia law. Witness my hand and official seal of this office on the date written.



Official Seal of Clerk

Che' Alexander, Clerk

Nana Gardiner

Prepared by:

INSTRUCTIONS FOR AUTHENTICATING THIS CERTIFICATION

This electronically certified record can be authenticated as having been duly certified by the issuing officer by accessing the link below:

<https://ecert.gsccca.org/document/WCP15-DK544-FUUT>

Authentication of a certified document is a multiple step process. Instructions for authenticating a certified document can be found at the link below:

<https://ecert.gsccca.org/authenticationinstructions>

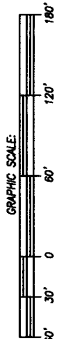


[illegible]

MINIMUM BUILDING SETBACK REQUIREMENTS:
FRONT YARD - 60.0'
SIDE YARD - 40.0' ADJ. TO STREET
REAR YARD - 40.0'
MINIMUM LOT AREA - 43,560 S.F.

CERTIFICATION AS TO RECORDING
This is certify that this plat has
been recorded in the
Fulton County, Georgia
Clerk, Superior Court,
Fulton County, Georgia

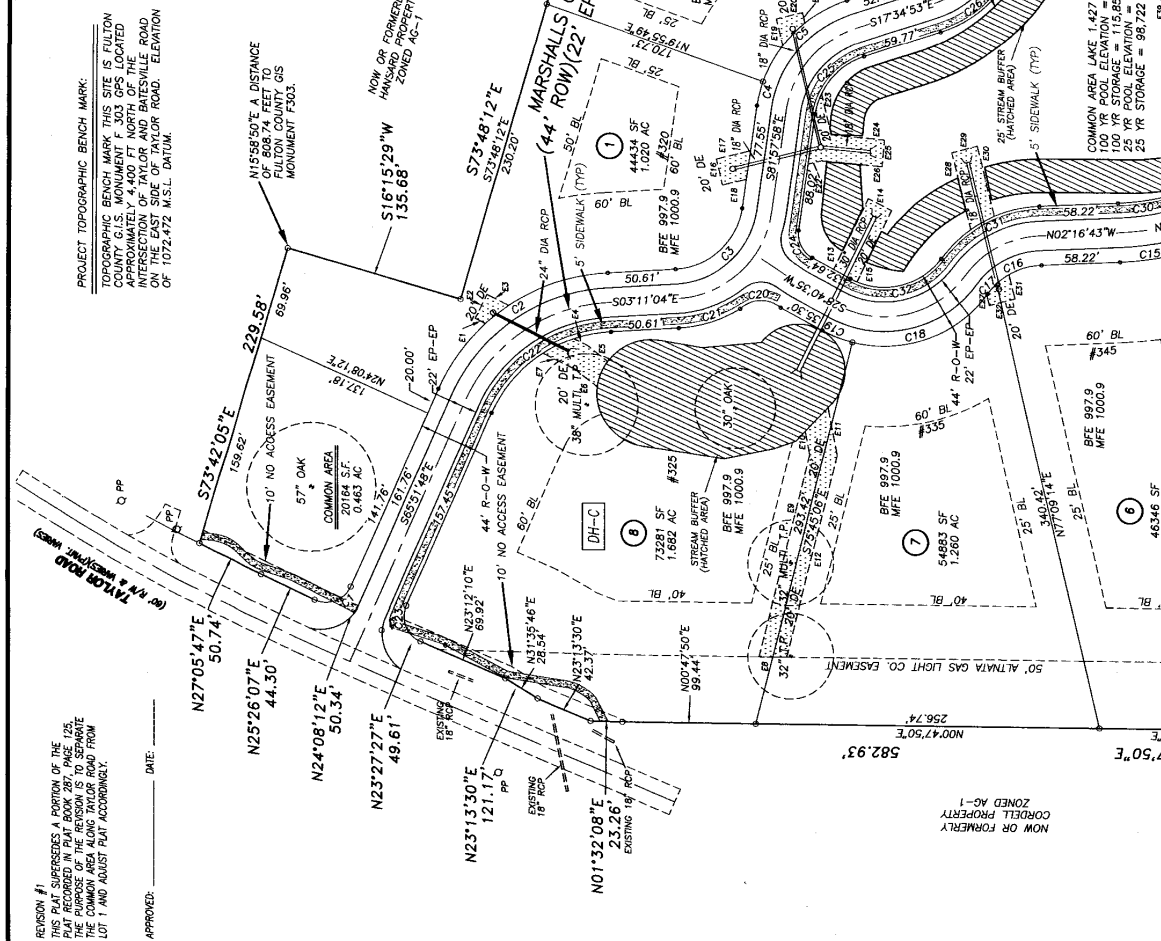
Plats 3-39 to 1-2



ID	BEARING	CHORD	ARC	RADIUS
C1	S20°12'51"E	28.60'	31.87'	20.00'
C2	S42°34'31"E	53.91'	59.91'	53.00'
C3	S42°34'31"E	67.27'	72.88'	53.00'
C4	N76°27'39"W	18.61'	18.64'	97.00'
C5	N44°16'07"W	87.13'	90.38'	97.00'
C6	N44°16'07"W	87.13'	90.38'	97.00'
C7	N42°43'59"W	28.05'	28.15'	97.00'
C8	S86°45'23"E	22.65'	24.07'	20.00'
C9	N72°40'48"E	53.01'	53.09'	327.99'
C10	N72°40'48"E	53.01'	53.09'	327.99'
C11	S44°16'51"W	22.65'	24.07'	20.00'
C12	S44°16'51"W	22.65'	24.07'	20.00'
C13	N39°57'13"E	97.45'	102.10'	97.00'
C14	N15°58'50"E	89.96'	97.45'	97.00'
C15	S07°49'14"E	43.95'	44.02'	228.04'
C16	N22°08'44"W	36.02'	36.75'	53.00'
C17	N12°42'01"W	10.51'	10.53'	53.00'
C18	N12°42'01"W	10.51'	10.53'	53.00'
C19	S21°27'44"W	24.35'	24.43'	97.00'
C20	N01°34'31"W	30.23'	33.13'	22.86'
C21	N01°34'31"W	30.23'	33.13'	22.86'
C22	N44°31'29"W	107.14'	112.68'	103.00'
C23	S68°40'11"W	28.51'	31.74'	20.00'
C24	S68°40'11"W	28.51'	31.74'	20.00'
C25	S68°40'11"W	28.51'	31.74'	20.00'
C26	S34°18'51"E	55.85'	56.86'	97.00'
C27	N42°43'59"W	15.33'	15.38'	53.00'
C28	N42°43'59"W	15.33'	15.38'	53.00'
C29	S01°22'09"E	101.89'	115.18'	68.00'
C30	S07°33'45"E	33.70'	33.75'	183.00'
C31	S07°33'45"E	33.70'	33.75'	183.00'
C32	S12°21'22"E	68.59'	75.91'	53.00'
C33	S12°21'22"E	68.59'	75.91'	53.00'

MINIMUM LOT AREA	USABLE SF ABOVE	% ABOVE	ZONE A
LOT AREA (SF)	TOTAL (SF)	ZONE A	ZONE A
1	43,560	43,560	100.00%
2	43,560	43,560	100.00%
3	43,560	43,560	100.00%
4	43,560	43,560	100.00%
5	43,560	43,560	100.00%
6	43,560	43,560	100.00%
7	43,560	43,560	100.00%
8	43,560	43,560	100.00%
9	43,560	43,560	100.00%
10	43,560	43,560	100.00%

LINE	BEARING	DISTANCE
1	S88°00'00"E	20.00'
2	S88°00'00"E	20.00'
3	S88°00'00"E	20.00'
4	S88°00'00"E	20.00'
5	S88°00'00"E	20.00'
6	S88°00'00"E	20.00'
7	S88°00'00"E	20.00'
8	S88°00'00"E	20.00'
9	S88°00'00"E	20.00'
10	S88°00'00"E	20.00'
11	S88°00'00"E	20.00'
12	S88°00'00"E	20.00'
13	S88°00'00"E	20.00'
14	S88°00'00"E	20.00'
15	S88°00'00"E	20.00'
16	S88°00'00"E	20.00'
17	S88°00'00"E	20.00'
18	S88°00'00"E	20.00'
19	S88°00'00"E	20.00'
20	S88°00'00"E	20.00'
21	S88°00'00"E	20.00'
22	S88°00'00"E	20.00'
23	S88°00'00"E	20.00'
24	S88°00'00"E	20.00'
25	S88°00'00"E	20.00'
26	S88°00'00"E	20.00'
27	S88°00'00"E	20.00'
28	S88°00'00"E	20.00'
29	S88°00'00"E	20.00'
30	S88°00'00"E	20.00'
31	S88°00'00"E	20.00'
32	S88°00'00"E	20.00'
33	S88°00'00"E	20.00'
34	S88°00'00"E	20.00'
35	S88°00'00"E	20.00'
36	S88°00'00"E	20.00'
37	S88°00'00"E	20.00'
38	S88°00'00"E	20.00'
39	S88°00'00"E	20.00'
40	S88°00'00"E	20.00'
41	S88°00'00"E	20.00'
42	S88°00'00"E	20.00'
43	S88°00'00"E	20.00'
44	S88°00'00"E	20.00'
45	S88°00'00"E	20.00'
46	S88°00'00"E	20.00'
47	S88°00'00"E	20.00'
48	S88°00'00"E	20.00'
49	S88°00'00"E	20.00'
50	S88°00'00"E	20.00'
51	S88°00'00"E	20.00'
52	S88°00'00"E	20.00'
53	S88°00'00"E	20.00'
54	S88°00'00"E	20.00'
55	S88°00'00"E	20.00'
56	S88°00'00"E	20.00'
57	S88°00'00"E	20.00'
58	S88°00'00"E	20.00'
59	S88°00'00"E	20.00'
60	S88°00'00"E	20.00'



REVISION #1
THIS PLAT SUPERSEDES A PORTION OF THE
PLAT RECORDED IN PLAT BOOK 280, PAGE 151,
AND THE COMMON AREA ALONG TAYLOR ROAD FROM
LOT 1 AND ADJUST PLAT ACCORDINGLY.

APPROVED: _____ DATE: _____

FINAL PLAT FOR
MARSHALL'S POND
LAND LOT 633
2nd DISTRICT 2nd SECTION FULTON COUNTY, GEORGIA

ENGINEERS, INC.
LCE
1101-17-200

DATE: 02/08/08
REVISED LOT 1 TO SEPARATE COMMON
AREAS ADJACENT TAYLOR ROAD.

DATE: 07/28/08
SCALE: 1" = 60'
1101-17-200

Tel: (770) 998-5763
Fax: (770) 643-4866
SHEET 2 OF 3
1265 Canton Street
Suite A
Norwell, GA 30075

