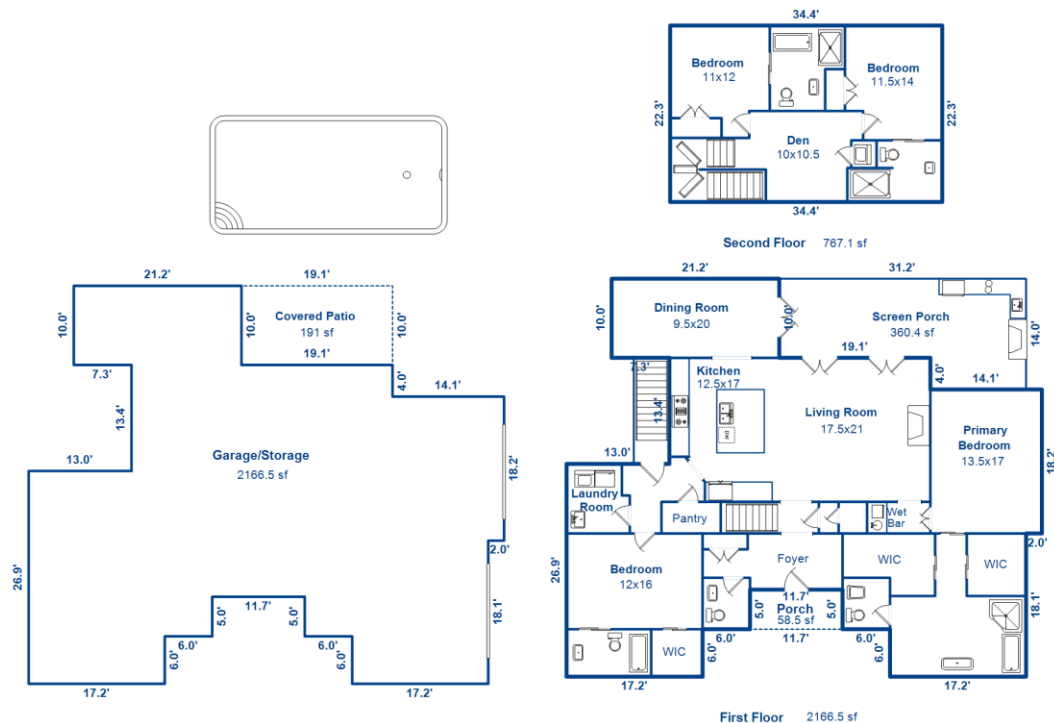


Charleston Measuring

Measuring Properties Since 2003

Measurements for:

1818 Rushland Grove Lane Johns Island, SC 29455



Total Gross Living Area is 2,934 Square Feet

The above dimensions were gathered performing an interior and exterior measurement of the property.

This report calculated the square footage for the requested property and is for informational purposes only, it is not performed as part of an Appraisal.

ANSI, the industry standard for measurement has been followed in this assignment. Measurements are to be taken and reported on the sketch or floor plan to the nearest tenth of a foot and the final square footage calculations are reported to the nearest whole square foot. Areas with wall height under 5' are not included in GLA. The reported room dimensions are approximate.