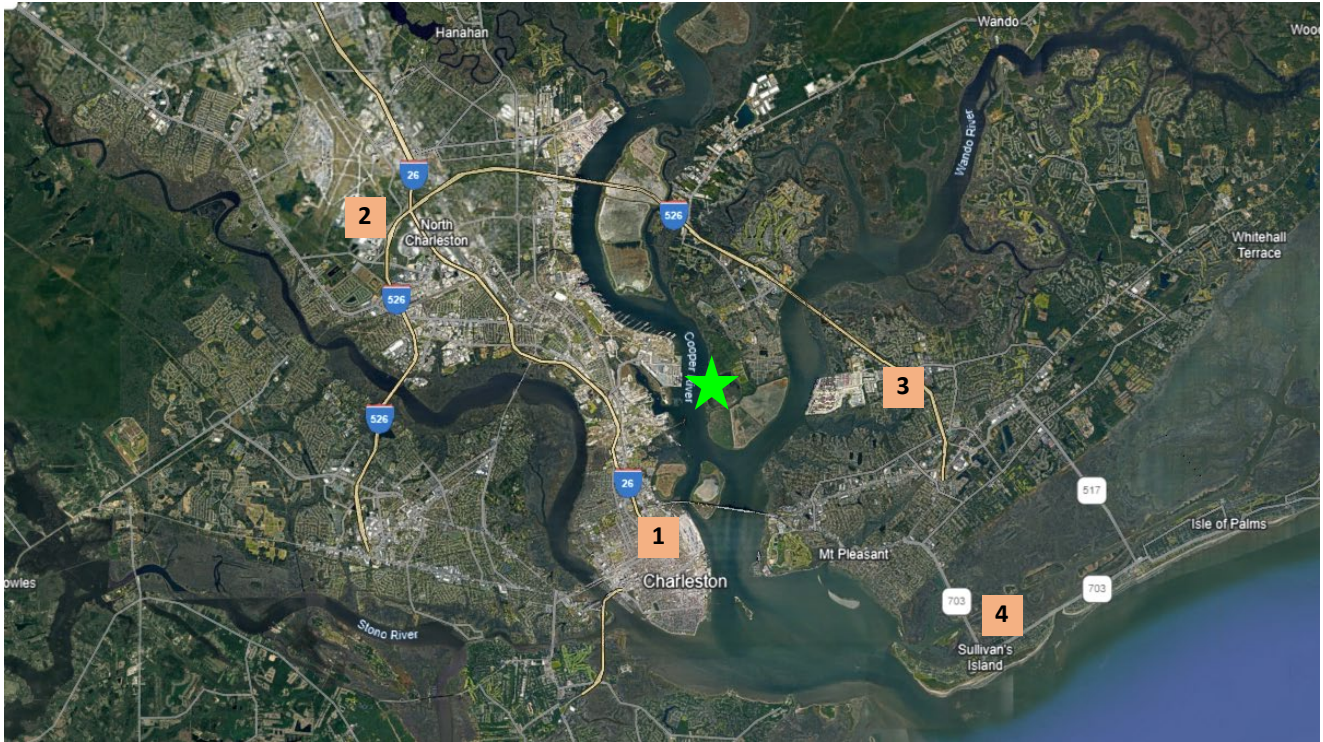




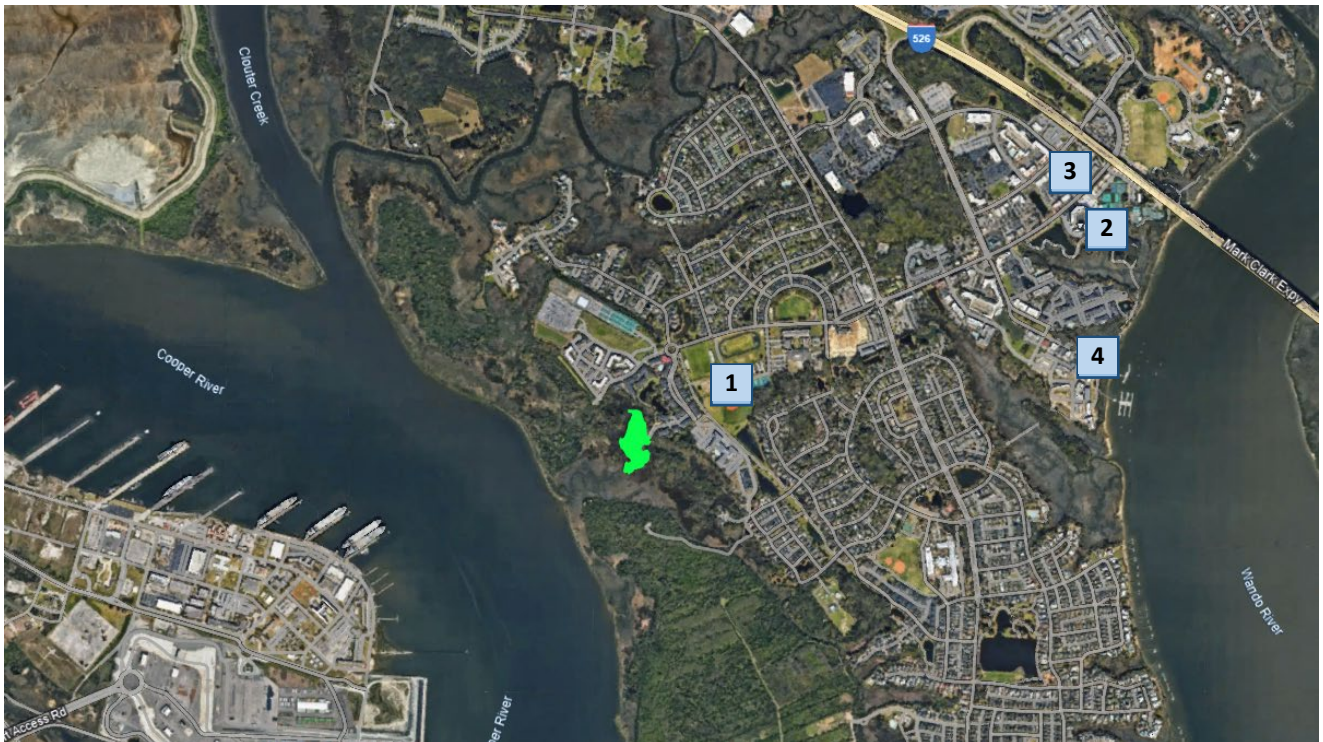
Haswell Property features 5.21 acres of untouched, historically significant land next to the mouth of the Cooper River. This vibrant landscape invites adventure seekers looking to stake their flag in the Charleston area. Haswell provides over 1 acre of developable land, permitted road access, beautifully protected oak trees, and sewer/water connection to the pristine property.



★ Haswell, Daniel Island

22 mile view

1	Downtown Charleston	13 miles	3	Mount Pleasant	6 miles
2	Charleston Airport	11 miles	4	Sullivan's Island	12 miles



★ Haswell, Daniel Island

4 mile view

1	Bishop England High	.5 miles	3	Publix	1.5 miles
2	Credit One Stadium	1.4 miles	4	Waterfront Park	1.6 miles

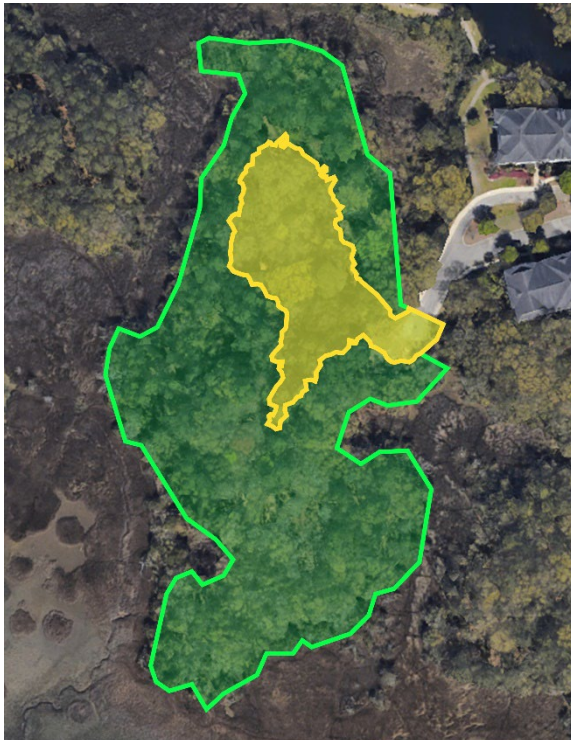


★ Haswell, Daniel Island

1.4 mile view


1 Bishop England High .5 miles
2 Etiwan Park .6 miles

3 Dog Park .1 miles

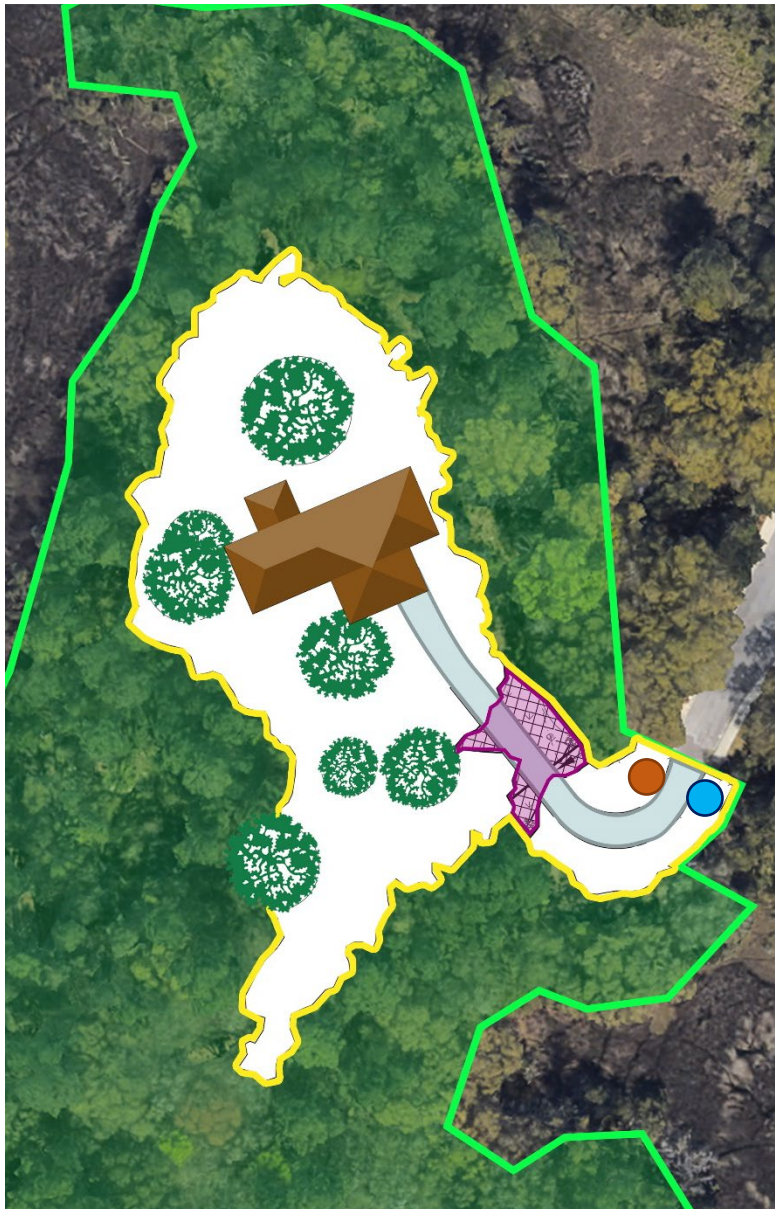


2,000 foot view



 Property Boundry 5.21 Acres



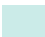




 Developable Area 1.02 Acres



Map is not to scale. Illustrations are artist's depictions only.

Haswell Property features 5.21 acres of untouched, historically significant land next to the mouth of the Cooper River. This vibrant landscape invites adventure seekers looking to stake their flag in the Charleston area. Haswell provides over 1 acre of developable land, permitted road access, beautifully protected oak trees, and sewer/water connection to the pristine property.



	Property Boundary	5.21 Acres
	Developable Area	1.02 Acres
	Residential Driveway	
	Permitted Wetland Crossing	
	Water Connection	
	Sewer Connection	
	Protected Trees	

