

\$750,000

MLS #2440461



THOUGHTFUL DESIGN

Tucked away in a serene setting, offering thoughtfully designed living spaces in a spacious two-story home with finished basement layout.



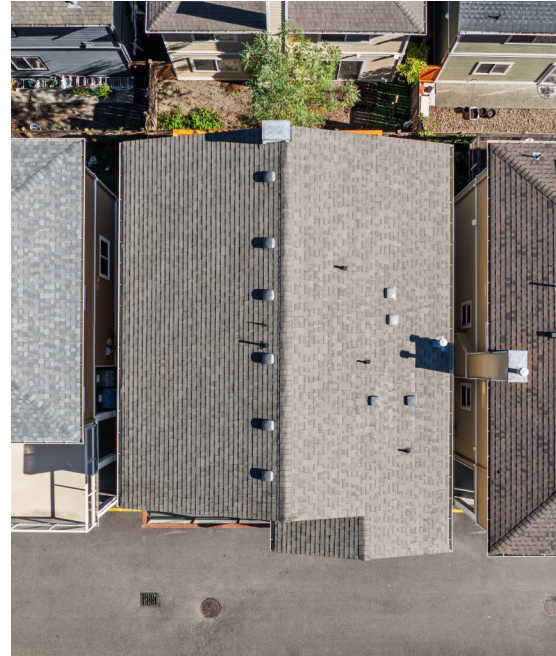


Mindy Hibbard
REAL ESTATE TEAM

- ◆ Year Built 2005
- ◆ 3 Bedrooms + 2 Full Baths + 2 Half Baths
- ◆ Approximate Livable Footage 1,927 Sq Ft
- ◆ Approximate Lot Size 1,742 Sq Ft
- ◆ Expansive Primary Suite w/Balcony
- ◆ Finished Basement
- ◆ Entertaining Deck & Patio
- ◆ 3 Car Covered Parking



SCAN FOR
VIRTUAL TOUR



LOCATION, LOCATION!

MLS #2440461
23727 80th Ct W, Edmonds, WA 98026

Welcome to Viking Heights! Tucked away in a serene setting, this 3-bedroom home offers thoughtfully designed living spaces in a spacious two-story home with finished basement layout. There are comfortable living areas across all three levels. Enjoy evenings by the fireplace in the open concept living area, complemented by forced air gas heating for year-round comfort. A stylish and functional kitchen boasting nice finishes, white appliances, new dishwasher, and window to confirm your guest's arrival. This is a great space for everyday meals or weekend gatherings flowing seamlessly into the dining and living spaces. An entertaining deck off the back of the home is ideal to extend your gatherings outdoors. Take the staircase to the upper level. The expansive primary suite includes its own balcony, full bathroom en suite and walk in closet. Two additional upper-level bedrooms share a full bathroom. The laundry closet is conveniently positioned off the bathroom and near the bedrooms. An abundance of windows allows natural light in. A half bath is located on each of the main and lower levels providing flexibility for guests or family. With two full baths and two half baths, convenience is built into every corner of this home. New flooring on two levels and freshly touched interior paint. The lower level is perfect for a home office, gym, media room or 4th bedroom. Two sliding doors out to a patio to enjoy starry nights. Three covered parking spaces include a carport and attached garage offering parking, storage or workspace. Low-maintenance landscape means more time enjoying nearby amenities or simply the serenity of home. Located in the desirable Edmonds School District, this property is close to parks, shopping, and commuter routes. Whether you're a first-time buyer, looking to downsize, upsize or invest, this well-maintained property is a must-see.

It simply checks all of the boxes!



Mindy Hibbard
MANAGING BROKER

425-350-8893

mindyhibbard@mhreteam.com
mindyhibbard.com

Subject to errors and omissions. Information deemed reliable but not guaranteed. If your home is currently on the market, this is not intended for solicitation.

RE/MAX

— TOWN CENTER —

