



618 THOMAS ROAD | CLEVELAND, GA

3BED | 2BATH | 1,776 SQFT

MODERN FARMHOUSE IN THE HEART OF CLEVELAND

Brand-new modern farmhouse offering 3 bedrooms, 2 bathrooms, and nearly 3,000 total square feet, including expansive covered porches and an oversized two-car garage. The open-concept layout features a vaulted great room filled with natural light, flowing into a designer kitchen and breakfast area. The private primary suite includes a walk-in closet, double vanities, and a tiled shower, while two additional bedrooms and a flexible bonus space provide room for work or guests. Enjoy over 700 square feet of covered porches with peaceful mountain views, blueberry bushes lining the property, and a long driveway with extra parking. Situated on 1.37 acres in a quiet setting, just minutes from downtown Cleveland, Helen, and North Georgia mountain adventures.

Working exclusively with the Lurie Homes and representing current and future phases of development, including 20+ additional homes planned for 2026.



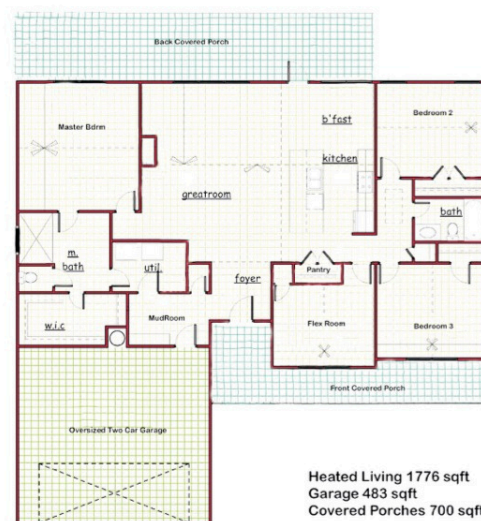
PROPERTY HIGHLIGHTS

- 3 Bedrooms | 2 Bathrooms + Flexible space
- Open floor plan ideal for entertaining
- Designer kitchen with large island
- Private primary suite with tile shower
- Walk-in closets
- Covered front & back porches
- Oversized two-car garage
- Minutes to outdoor attractions



SCAN HERE

Call Today. To Learn More



CHRISTINA BROOKS
REALTOR®

C: (352) 216-1361

christina.brooks@bhhsgeorgia.com

CORE
PROPERTIES

corepropertiesga.com

JOEY ABERCROMBIE
REALTOR®

C: (678) 316-9922

joey.abercrombie@bhhsgeorgia.com

Gainesville Office | 500 Jesse Jewell Parkway SE, Suite 300 | Gainesville, GA 30501 | (770) 536-3007

BHH Affiliates, LLC. An independently operated subsidiary of HomeServices of America, Inc., a Berkshire Hathaway affiliate, and a franchisee of BHH Affiliates, LLC. Berkshire Hathaway HomeServices and the Berkshire Hathaway HomeServices symbol are registered service marks of Columbia Insurance Company, a Berkshire Hathaway affiliate. If your home is currently listed with a Broker, this is not intended as a solicitation. Equal Housing Opportunity.

Virtual Vision



eFiled & eRecorded By:
Dena M Adams CSC
White County GA
06/20/2025 11:15 AM
Plat Book: 02025
Page: 0090
\$10.00 Recording Fees

SURVEYOR'S CERTIFICATE

AS REQUIRED BY SUBSECTION (d) OF O.C.G.A. 15 - 6 - 67, THIS PLAT HAS BEEN PREPARED BY A LAND SURVEYOR AND APPROVED BY ALL APPLICABLE LOCAL JURISDICTIONS FOR RECORDING AS EVIDENCED BY APPROVAL CERTIFICATES, SIGNATURES, STAMPS, OR STATEMENTS HEREON. SUCH APPROVALS OR AFFIRMATIONS SHOULD BE CONFIRMED WITH THE APPROPRIATE GOVERNMENTAL BODIES BY ANY PURCHASER OR USER OF THIS PLAT AS TO THE INTENDED USE OF ANY PARCEL. FURTHERMORE, THE UNDERSIGNED LAND SURVEYOR CERTIFIES THAT THIS PLAT COMPLIES WITH THE MINIMUM TECHNICAL STANDARDS FOR PROPERTY SURVEYS IN GEORGIA AS SET FORTH IN THE RULES AND REGULATIONS OF THE GEORGIA BOARD OF REGISTRATION FOR PROFESSIONAL ENGINEERS AND LAND SURVEYORS AND AS SET FORTH IN O.C.G.A. SECTION 15 - 6 - 67.

Russell L. Cheek
RUSSELL L. CHEEK



ABBREVIATIONS:

C/L = centerline
CMF = concrete monument found
CTP = crimped top pipe
DB = deed book
IPF = iron pin found
IPS = iron pin set
INT. = intersection
OTP = open top pipe
O/S = offset
N/A = not applicable
PB = plat book
N/F = now or formerly
RB = rebar
R/W = right of way

LINE TABLE		
Id	Bearing	Distance
1	N 04°24'46" W	71.46'
2	N 05°03'23" W	129.39'
3	N 04°00'41" W	55.88'
4	N 02°56'24" W	71.40'
5	N 01°20'58" W	69.82'
6	N 00°20'15" W	64.53'
7	N 00°27'28" E	65.29'
8	N 01°09'17" W	64.38'
9	N 04°43'47" W	51.59'
10	N 11°43'54" W	17.11'
11	N 64°18'16" E	7.90'
12	S 44°58'44" E	32.73'
13	S 34°37'14" E	52.00'
14	S 24°54'57" E	76.96'
15	S 24°52'34" E	178.40'
16	S 28°11'57" E	169.64'
17	S 24°25'28" E	21.21'
18	S 24°25'28" E	29.47'
19	S 30°43'52" E	43.36'
20	S 32°05'17" E	70.33'
21	S 34°27'46" E	68.73'
22	S 35°07'53" E	40.05'

THOMAS ROAD
60' R/W

APPROVED BY
WHITE CO., GA.
PUBLIC WORKS

DATE: 06-19-25

BY: *Hlw*

TRACT 2
1.37 AC.

TRACT 1
1.37 AC.

THOMASON ROAD
(mapped @ 50' R/W)

WHITE COUNTY
PLANNING
DEPARTMENT

THIS PLAN
IS APPROVED

DATE: 6-18-25
LV Change #21829

REFERENCE:
DEED BOOK FF PAGE 17

TOTAL AREA: 2.74 ACRES

The field equipment used for this survey was a Topcon GPT 3005W total station. The field data upon which this plat was based has a closure precision of one foot in 10,716 feet and an angular error of 04 seconds per angle point and was adjusted using the compass rule.

This plat has been calculated for closure and found to be accurate within one foot in 438,356 average feet.



SURVEYED BY:
RUSSELL L. CHEEK
163 N. CURRAHEE LANE
TOCCOA, GA 30577
PHONE: 706-886-8536

APPROVED *10-5-25*
WHITE COUNTY ENV HEALTH

This Property Is Not In A
Protected Mountain
And Hillside Area

FOR INDIVIDUAL SEWAGE &
INDIVIDUAL ~~R/W~~ WATER

DIVISION SURVEY FOR:
JOYCE RAY

Located in: Land Lot 6 District: 1st Section n/a

City: n/a, White County, Georgia

Date: 11 - March - 2019 Job No. 1911b Fb: 37

Revisions: none

Field work completed: 11 - March - 2019

Scale: 1 inch = 200 feet File: Ray, Joyce





477 THOMASON ROAD | CLEVELAND, GA

3 BED | 2 BATH | 1,776 SQFT

MODERN FARMHOUSE IN THE HEART OF CLEVELAND

This thoughtfully designed new construction offers 3 bedrooms, 2 bathrooms, and just under 3,000 total square feet, including expansive covered porches and an oversized two-car garage. The open-concept layout features a vaulted great room flowing into a designer kitchen and breakfast area, perfect for everyday living or entertaining. The private primary suite includes a walk-in closet, double vanity, and tile shower, while two additional bedrooms and a flexible bonus space provide room for guests, work, or hobbies. Enjoy over 700 square feet of covered porches, a long paved driveway, and peaceful North Georgia mountain surroundings. Located minutes from downtown Cleveland and close to Helen, wineries, hiking trails, and outdoor adventures, this home offers the perfect blend of modern comfort and rural charm.

Working exclusively with the Lurie Homes and representing current and future phases of development, including 20+ additional homes planned for 2026.



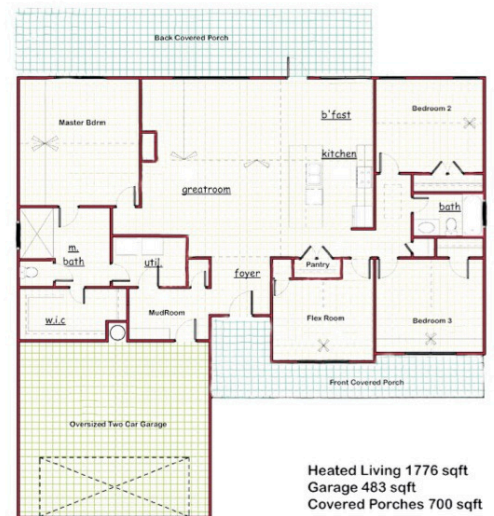
PROPERTY HIGHLIGHTS

- 3 Bedrooms | 2 Bathrooms + Flexible space
- Open floor plan ideal for entertaining
- Designer kitchen with large island
- Private primary suite with tile shower
- Walk-in closets
- Covered front & back porches
- Oversized two-car garage
- Minutes to outdoor attractions



SCAN HERE

Call Today. To Learn More



CHRISTINA BROOKS
REALTOR®

C: (352) 216-1361

christina.brooks@bhhsgeorgia.com

CORE
PROPERTIES

corepropertiesga.com

JOEY ABERCROMBIE
REALTOR®

C: (678) 316-9922

joey.abercrombie@bhhsgeorgia.com

Gainesville Office | 500 Jesse Jewell Parkway SE, Suite 300 | Gainesville, GA 30501 | (770) 536-3007

BHH Affiliates, LLC. An independently operated subsidiary of HomeServices of America, Inc., a Berkshire Hathaway affiliate, and a franchisee of BHH Affiliates, LLC. Berkshire Hathaway HomeServices and the Berkshire Hathaway HomeServices symbol are registered service marks of Columbia Insurance Company, a Berkshire Hathaway affiliate. If your home is currently listed with a Broker, this is not intended as a solicitation. Equal Housing Opportunity.

Virtual Vision



eFiled & eRecorded By:
Dena M Adams CSC
White County GA
06/20/2025 11:15 AM
Plat Book: 02025
Page: 0090
\$10.00 Recording Fees

SURVEYOR'S CERTIFICATE

AS REQUIRED BY SUBSECTION (d) OF O.C.G.A. 15 - 6 - 67, THIS PLAT HAS BEEN PREPARED BY A LAND SURVEYOR AND APPROVED BY ALL APPLICABLE LOCAL JURISDICTIONS FOR RECORDING AS EVIDENCED BY APPROVAL CERTIFICATES, SIGNATURES, STAMPS, OR STATEMENTS HEREON. SUCH APPROVALS OR AFFIRMATIONS SHOULD BE CONFIRMED WITH THE APPROPRIATE GOVERNMENTAL BODIES BY ANY PURCHASER OR USER OF THIS PLAT AS TO THE INTENDED USE OF ANY PARCEL. FURTHERMORE, THE UNDERSIGNED LAND SURVEYOR CERTIFIES THAT THIS PLAT COMPLIES WITH THE MINIMUM TECHNICAL STANDARDS FOR PROPERTY SURVEYS IN GEORGIA AS SET FORTH IN THE RULES AND REGULATIONS OF THE GEORGIA BOARD OF REGISTRATION FOR PROFESSIONAL ENGINEERS AND LAND SURVEYORS AND AS SET FORTH IN O.C.G.A. SECTION 15 - 6 - 67.

Russell L. Cheek
RUSSELL L. CHEEK



ABBREVIATIONS:

C/L = centerline
CMF = concrete monument found
CTP = crimped top pipe
DB = deed book
IPF = iron pin found
IPS = iron pin set
INT. = intersection
OTP = open top pipe
O/S = offset
N/A = not applicable
PB = plat book
N/F = now or formerly
RB = rebar
R/W = right of way

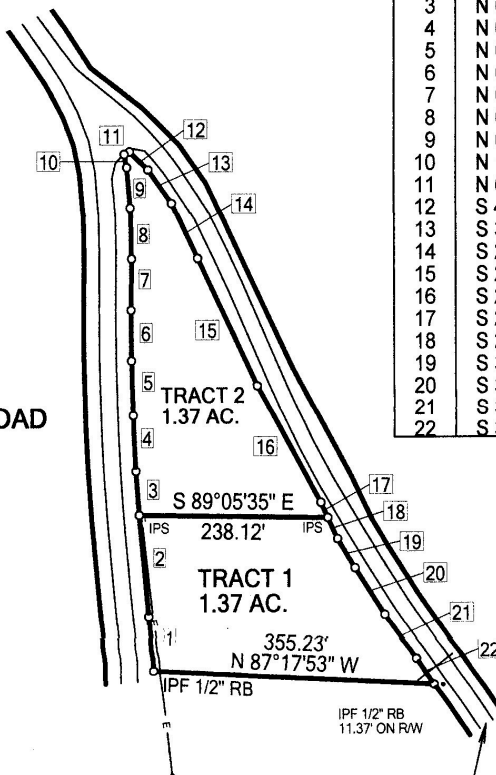
LINE TABLE		
Id	Bearing	Distance
1	N 04°24'46" W	71.46'
2	N 05°03'23" W	129.39'
3	N 04°00'41" W	55.88'
4	N 02°56'24" W	71.40'
5	N 01°20'58" W	69.82'
6	N 00°20'15" W	64.53'
7	N 00°27'28" E	65.29'
8	N 01°09'17" W	64.38'
9	N 04°43'47" W	51.59'
10	N 11°43'54" W	17.11'
11	N 64°18'16" E	7.90'
12	S 44°58'44" E	32.73'
13	S 34°37'14" E	52.00'
14	S 24°54'57" E	76.96'
15	S 24°52'34" E	178.40'
16	S 28°11'57" E	169.64'
17	S 24°25'28" E	21.21'
18	S 24°25'28" E	29.47'
19	S 30°43'52" E	43.36'
20	S 32°05'17" E	70.33'
21	S 34°27'46" E	68.73'
22	S 35°07'53" E	40.05'

THOMAS ROAD
60' R/W

APPROVED BY
WHITE CO., GA.
PUBLIC WORKS

DATE: 06-19-25

BY: *HLW*



WHITE COUNTY
PLANNING
DEPARTMENT

THIS PLAN
IS APPROVED

DATE: 6-18-25
LV Change #21829

REFERENCE:
DEED BOOK FF PAGE 17

TOTAL AREA: 2.74 ACRES

The field equipment used for this survey was a Topcon GPT 3005W total station. The field data upon which this plat was based has a closure precision of one foot in 10,716 feet and an angular error of 04 seconds per angle point and was adjusted using the compass rule.

This plat has been calculated for closure and found to be accurate within one foot in 438,356 average feet.



SURVEYED BY:
RUSSELL L. CHEEK
163 N. CURRAHEE LANE
TOCCOA, GA 30577
PHONE: 706-886-8536

APPROVED *10-5-25*
WHITE COUNTY ENV HEALTH

This Property Is Not In A
Protected Mountain
And Hillside Area

FOR INDIVIDUAL SEWAGE &
INDIVIDUAL ~~R/W~~ WATER

DIVISION SURVEY FOR:
JOYCE RAY

Located in: Land Lot 6 District: 1st Section n/a

City: n/a, White County, Georgia

Date: 11 - March - 2019 Job No. 1911b Fb: 37

Revisions: none

Field work completed: 11 - March - 2019

Scale: 1 inch = 200 feet File: Ray, Joyce

