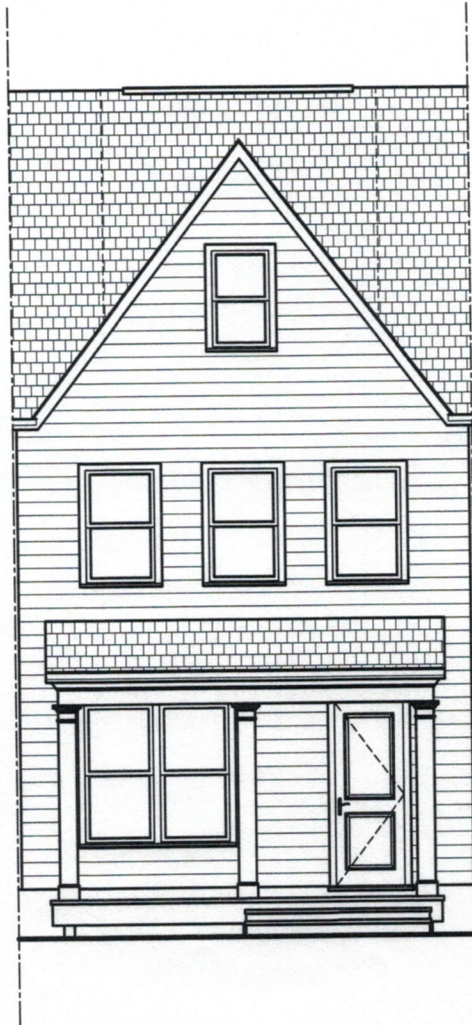


224 EAST 6TH STREET



FRONT ELEVATION

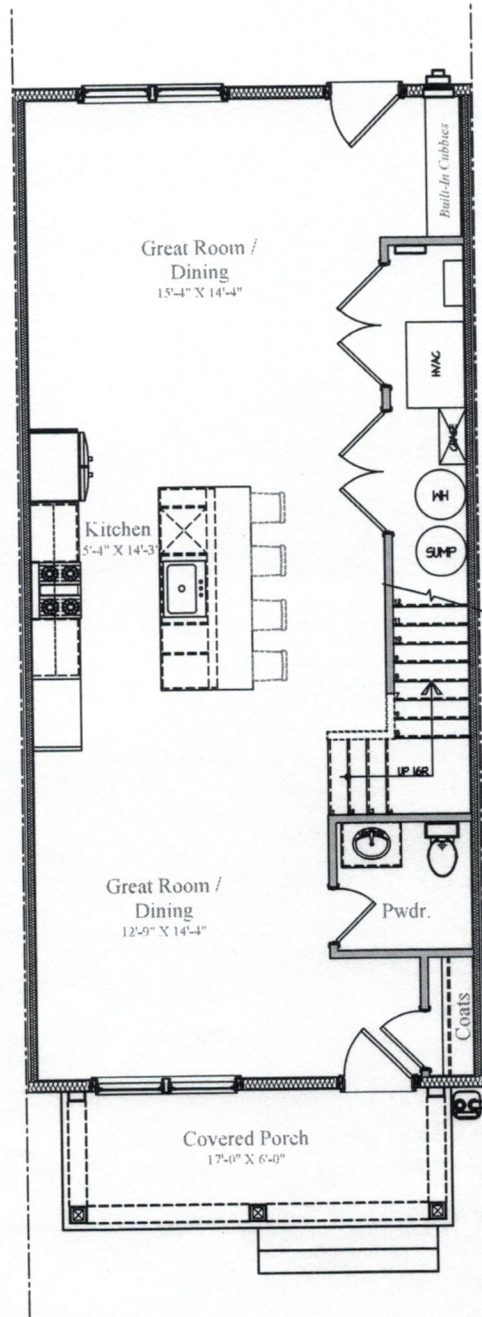


7/18/2020

Design and details are the exclusive property of Wormald Homes, Inc. Unauthorized use is strictly prohibited. Actual product and specifications may vary in dimension or detail from these drawings and are subject to change without notice. Window and door locations vary per elevation. MHBR No. 3514

W
WORMALD

224 EAST 6TH STREET



MAIN LEVEL

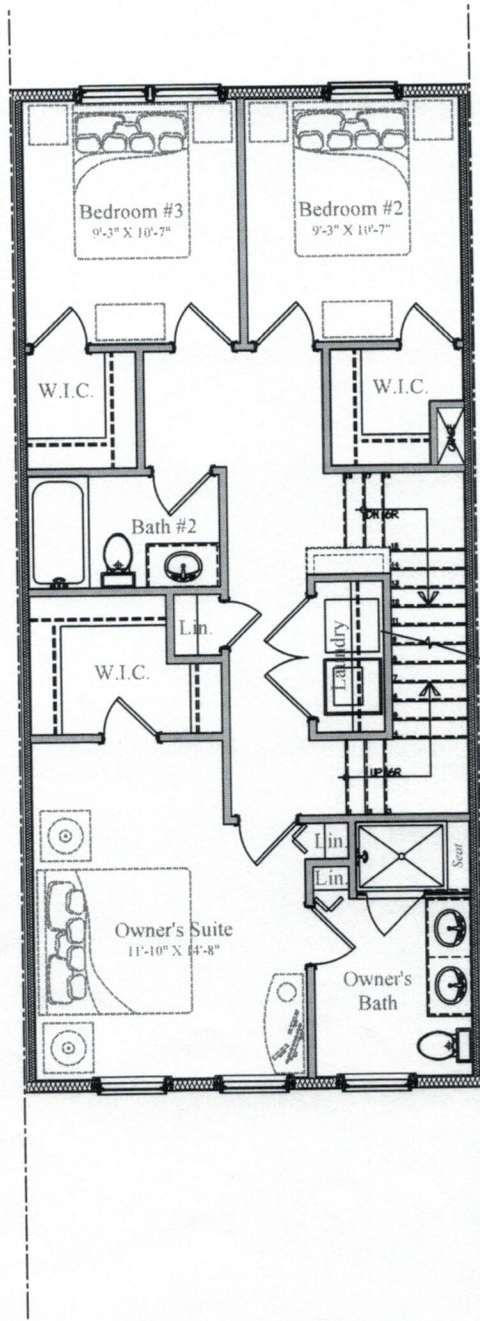


7/18/2020

Design and details are the exclusive property of Wormald Homes, Inc. Unauthorized use is strictly prohibited. Actual product and specifications may vary in dimension or detail from these drawings and are subject to change without notice. Window and door locations vary per elevation. MHBR No. 3514

W
WORMALD

224 EAST 6TH STREET



UPPER LEVEL

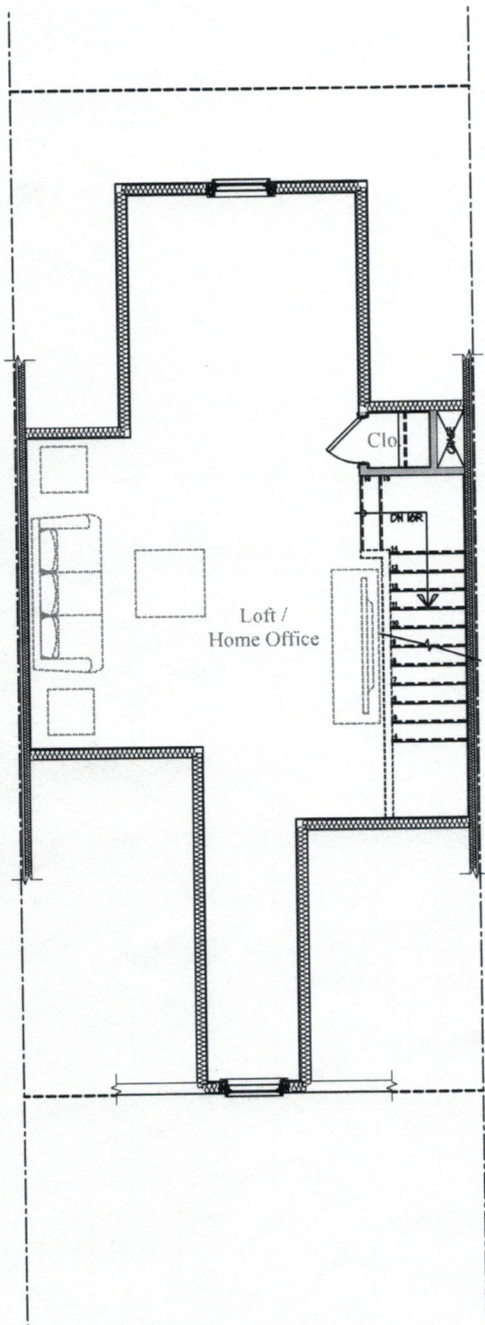


7/18/2020

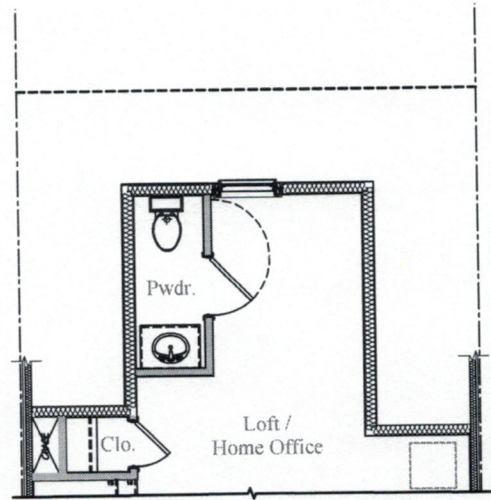
Design and details are the exclusive property of Wormald Homes, Inc. Unauthorized use is strictly prohibited. Actual product and specifications may vary in dimension or detail from these drawings and are subject to change without notice. Window and door locations vary per elevation. MHBR No. 3514

W
WORMALD

224 EAST 6TH STREET



LOFT LEVEL



OPTIONAL POWDER ROOM



7/18/2020

Design and details are the exclusive property of Wormald Homes, Inc. Unauthorized use is strictly prohibited. Actual product and specifications may vary in dimension or detail from these drawings and are subject to change without notice. Window and door locations vary per elevation. MHBR No. 3514

W
WORMALD