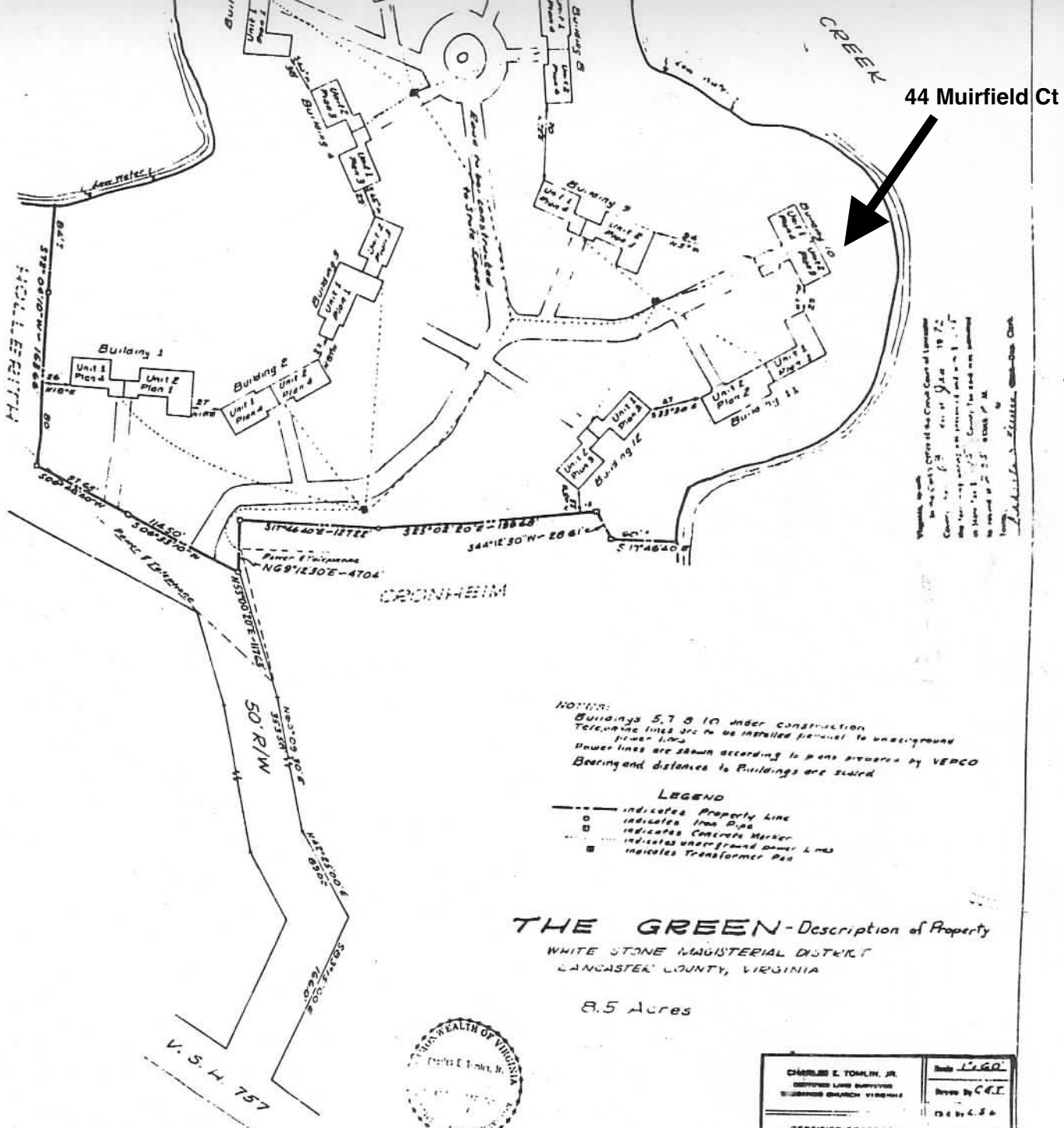


167 677



44 Muirfield Ct

Plotted to scale
 in the County Office of the Circuit Court of Lancaster
 County, Virginia, on the 19th day of
 December, 1971. The land was surveyed
 on the 19th day of December, 1971. The land was
 returned to the County Office of the
 Clerk of the Circuit Court of Lancaster
 County, Virginia, on the 19th day of
 December, 1971.

NOTES:
 Buildings 5, 7 & 10 under construction
 Telephone lines are to be installed parallel to underground
 power lines
 Power lines are shown according to plans prepared by VERCO
 Bearing and distances to Buildings are solid

LEGEND
 - - - - - indicates Property Line
 ○ indicates Iron Pipe
 □ indicates Concrete Marker
 - - - - - indicates underground power lines
 ■ indicates Transformer Pad

THE GREEN - Description of Property
 WHITE STONE MANAGERIAL DISTRICT
 LANCASTER COUNTY, VIRGINIA

8.5 Acres



CHARLES E. TOMLIN, JR. SURVEYOR 2000 BAYVIEW DRIVE LANCASTER, VIRGINIA	Book L-160 Page 11
CERTIFIED CORRECT Charles E. Tomlin, Jr. SURVEYOR	1971 Dec 15 1971
December 8, 1971	

THE GREEN, INC.

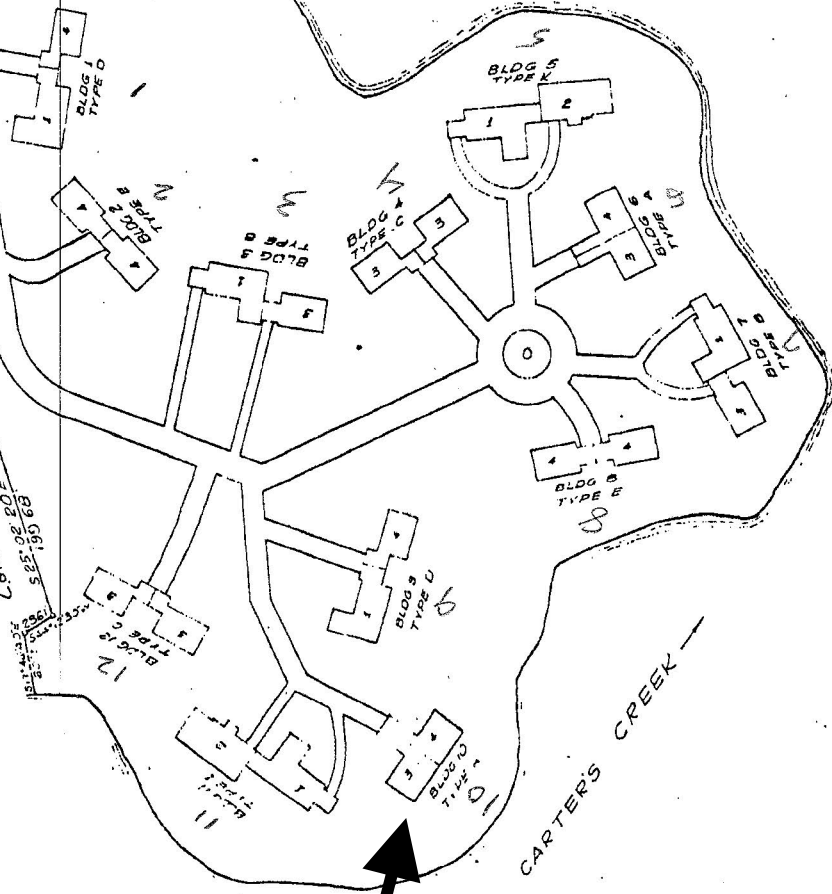
WHITE STONE MAGISTERIAL DISTRICT
LANCASTER COUNTY, VIRGINIA

J. GEORGE HOLLERITH

THE TIDES INN, INC.
S. 82° 33' 12" W
1/4 50' S. 02° 48' 20" W
1978.5

M. O. POZIS
S. 55° 51' 12" E
3.78

S. 117° 46' 40" E
5.17
L. R. LEIGH
S. 82° 02' 20" E
5.85
1959.68



44 Muirfield Ct