

D-44956  
 03/14/2025 12:47:45 PM  
 Register of Deeds, Rockingham County  
 PLAN  
 25.00

*Christina Seay*

LEGEND

- ENTRY
- LCA LIMITED COMMON AREA
- F.F.E. FINISH FLOOR ELEVATION
- H.O.A. HOME OWNERS ASSOCIATION (COMMON AREA)

SQUARE FOOTAGE

UNIT #15	1,158 sq. ft.
UNIT #12	1,158 sq. ft.
STAIR 2	237 sq. ft.
OFFICE #1	237 sq. ft.
OFFICE #2	237 sq. ft.
OFFICE #3	237 sq. ft.

ALL AREAS NOT SHOWN HEREON AS A UNIT OR LIMITED COMMON AREA (LCA) ARE COMMON AREA.

I HEREBY CERTIFY THAT THIS FLOOR PLAN IS ACCURATE AND COMPLIES WITH RSA 556-B:20. II. ALL UNITS AND LIMITED COMMON AREA OR PORTIONS THEREOF DEPICTED HEREON AS COMPLETED HAVE BEEN SUBSTANTIALLY COMPLETED, EXCEPT AS NOTED.



*Christina Seay*  
 REGISTERED ARCHITECT  
 DATE 5.10.25



BUILDING FLOOR PLAN:

Residences at Foundry Place Condominium,  
 88-89 Foundry Place,  
 Portsmouth, NH 03801

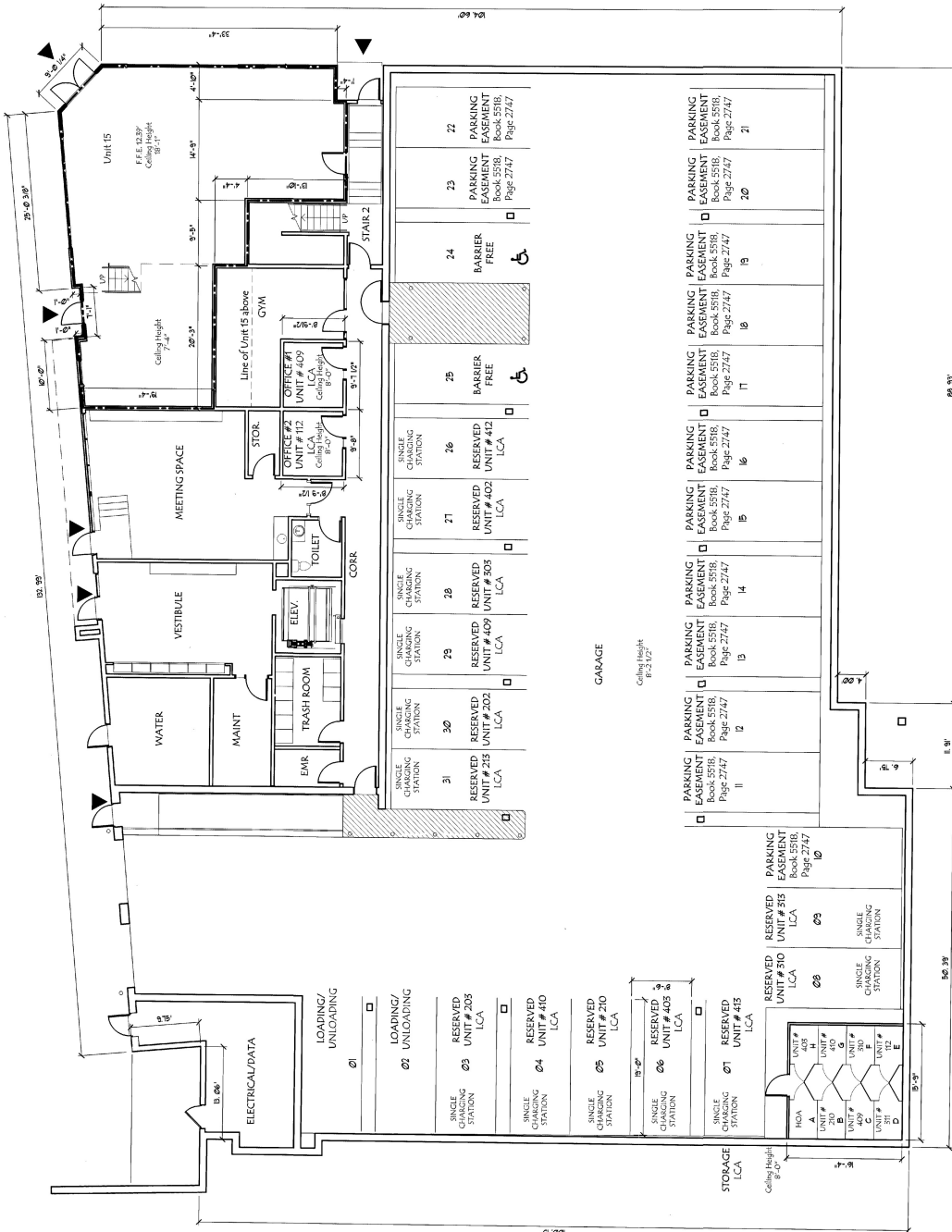
OWNER of RECORD:  
 Residences at Foundry Place, LLC  
 One Cate Street, Portsmouth, NH 03801

PLAN PREPARED BY:

THA Architects, LLC

P.O. BOX 88 - STRATHAM, NH 03885 - (603) 770-2481

DATE DRAWN BY: March 10, 2025/THI  
 SCALE: AS SHOWN  
 SHEET NO: 1 OF 6  
 JOB NO: 23010



Completed Unit 15  
 floor elevations  
 and overall building  
 dimensions are  
 certified from the Site Plan.

D-44956 Sheet 1 of 6

1 Garage Floor Plan  
 1/8" = 1'-0"

D-44955  
 Register of Deeds, Rockingham County  
 03/14/2023 2:47:44 PM  
 PLAN NUMBER: 2300

**LEGEND**

- ▲ ENTRY
- LIMITED COMMON AREA
- FINISH FLOOR ELEVATION
- UNIT BOUNDARY (PERIMETER)
- HOME OWNERS ASSOCIATION (COMMON AREA)

**SQUARE FOOTAGE**

UNIT 15 (Upper Level)	908 sq. ft.
UNIT 101	278 sq. ft.
UNIT 102	1058 sq. ft.
UNIT 103	1143 sq. ft.
UNIT 104	1030 sq. ft.
UNIT 105	908 sq. ft.
UNIT 106	737 sq. ft.
UNIT 107	669 sq. ft.
UNIT 108	1054 sq. ft.
UNIT 109	1261 sq. ft.
UNIT 110	651 sq. ft.
UNIT 111	651 sq. ft.
UNIT 112	764 sq. ft.

ALL AREAS NOT SHOWN HEREON AS A UNIT OR LIMITED COMMON AREA (LCA) ARE COMMON AREA.

I HEREBY CERTIFY THAT THIS FLOOR PLAN IS ACCURATE AND COMPLES WITH RSA 356-B:20. I, ALL UNITS AND LIMITED COMMON AREA OR PORTIONS THEREOF DEPICTED HEREON AS COMPLETED HAVE BEEN SUBSTANTIALLY COMPLETED, EXCEPT AS NOTED.



Thomas A. Thayer  
 REGISTERED ARCHITECT  
 3.19.25  
 DATE



**BUILDING FLOOR PLAN:**

Residences at Foundry Place Condominium,  
 88-89 Foundry Place,  
 Portsmouth, NH 03801

OWNER OF RECORD:  
 Residences at Foundry Place, LLC  
 One Cate Street, Portsmouth, NH 03801

PLAN PREPARED BY:

THA Architects, LLC

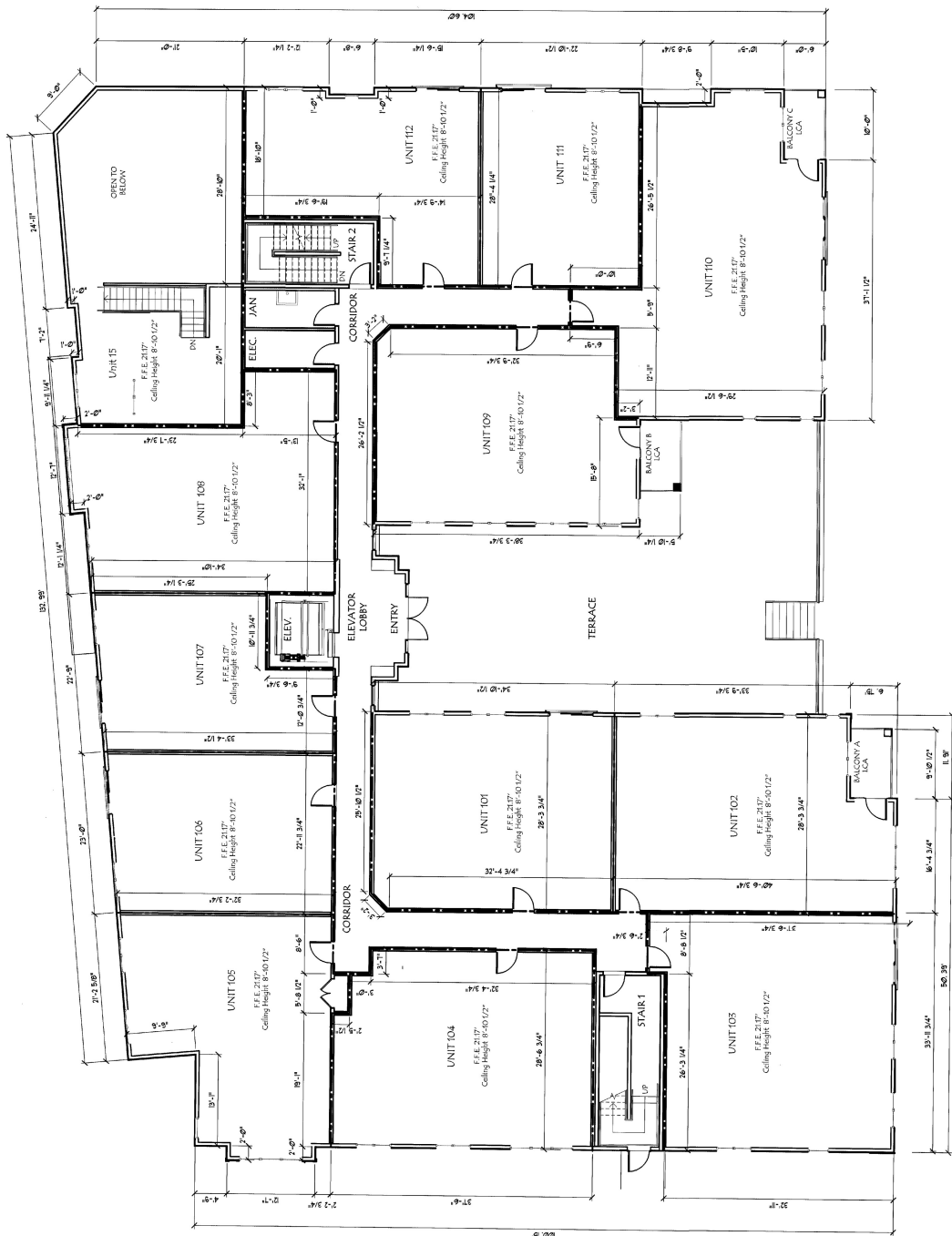
P.O. BOX 88 - STRATHAM, NH 03885 - (603) 770-2491

DATE DRAWN BY:  
 March 13, 2023/TH

SCALE:  
 AS SHOWN

SHEET NO:  
 2 OF 6

JOB NO:  
 23010



**1** First Floor Plan  
 1/8" = 1'-0"

**D-44956** Sheet 2 of 6

D-44956  
 Registrar of Deeds, Rockingham County  
 LUMP sum: 25.00  
 Fee: 1.00

**LEGEND**

- ▲ ENTRY
- LIMITED COMMON AREA
- FINISH FLOOR ELEVATION
- UNIT BOUNDARY (PERIMETER)
- HOME OWNERS ASSOCIATION (COMMON AREA)

**SQUARE FOOTAGE**

UNIT 201	978 sq. ft.
UNIT 202	1168 sq. ft.
UNIT 203	1030 sq. ft.
UNIT 204	908 sq. ft.
UNIT 205	737 sq. ft.
UNIT 206	669 sq. ft.
UNIT 207	991 sq. ft.
UNIT 208	1036 sq. ft.
UNIT 209	1062 sq. ft.
UNIT 210	1621 sq. ft.
UNIT 211	764 sq. ft.
UNIT 212	1255 sq. ft.

ALL AREAS NOT SHOWN HEREON AS A UNIT OR LIMITED COMMON AREA (LCA) ARE COMMON AREA.

I HEREBY CERTIFY THAT THIS FLOOR PLAN IS ACCURATE AND COMPLES WITH RSA 556-B:20. II. ALL UNITS AND LIMITED COMMON AREA OR PORTIONS THEREOF DEPICTED HEREON AS COMPLETED HAVE BEEN SUBSTANTIALLY COMPLETED, EXCEPT AS NOTED.



Thomas A. Thayer  
 REGISTERED ARCHITECT  
 DATE: 3-14-25



**BUILDING FLOOR PLAN:**

Residences at Foundry Place Condominium,  
 88-89 Foundry Place,  
 Portsmouth, NH 03801

OWNER OF RECORD:  
 Residences at Foundry Place, LLC  
 One Cate Street, Portsmouth, NH 03801

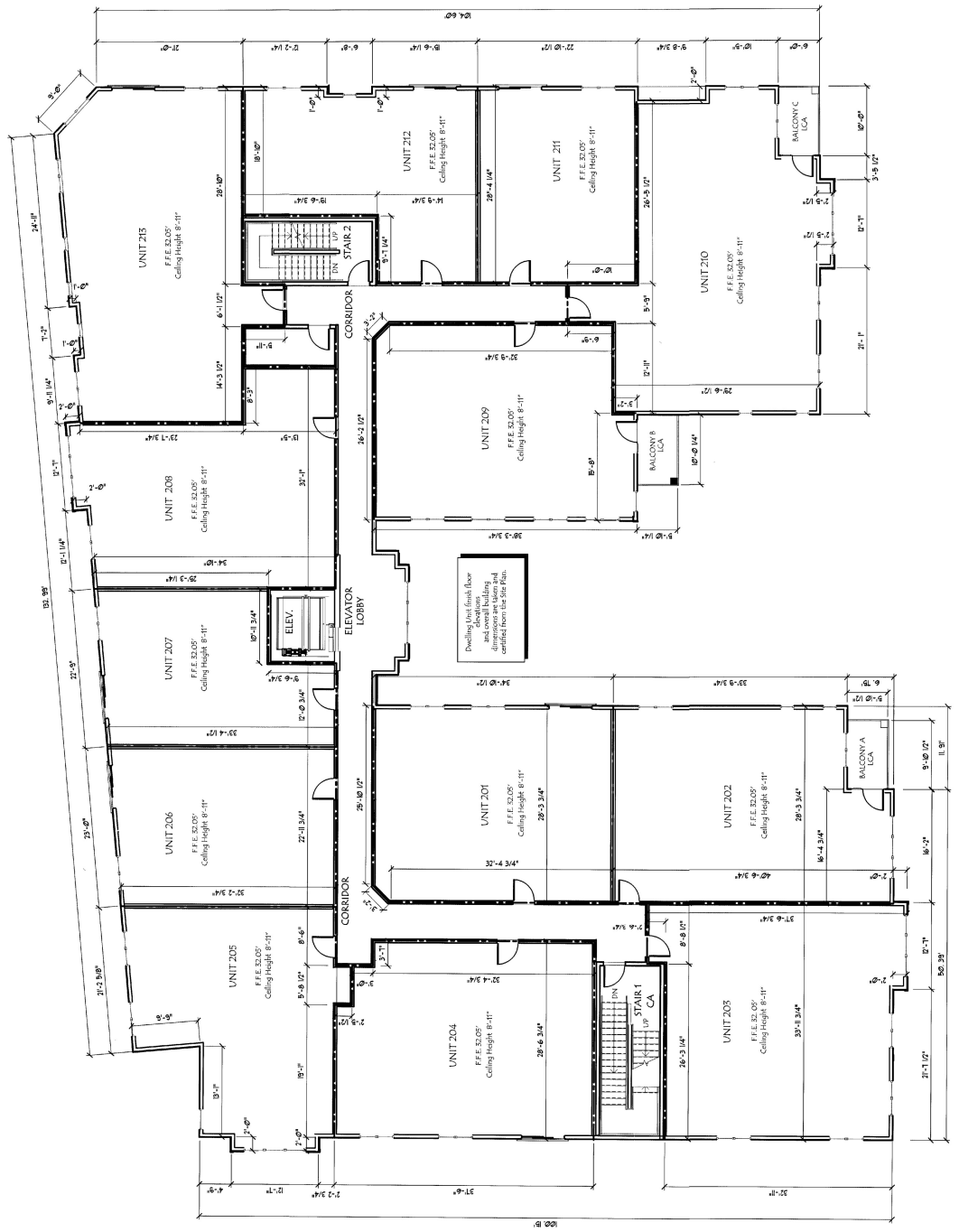
PLAN PREPARED BY:  
**THA Architects, LLC**  
 P.O. BOX 88 - STRATHAM, NH 03865 - (603) 770-2491

DATE DRAWN BY:  
 March 14, 2025/TH

SCALE:  
 AS SHOWN

SHEET NO:  
 3 OF 6

JOB NO:  
 23000



**1** Second Floor Plan  
 18' x 15'

D-44956

Sheet 3 of 6



D-4496  
 Register of Deeds, Rockingham County  
 LUMP  
 1/24/21  
 2500  
 2000

**LEGEND**

- ENTRY
- LIMITED COMMON AREA
- LCA
- FINISH FLOOR ELEVATION
- F.F.E.
- UNIT BOUNDARY (PERIMETER)
- H.O.A.
- HOME OWNERS ASSOCIATION (COMMON AREA)

**SQUARE FOOTAGE**

UNIT 401	978 sq. ft.
UNIT 402	1168 sq. ft.
UNIT 403	1020 sq. ft.
UNIT 404	1020 sq. ft.
UNIT 405	908 sq. ft.
UNIT 406	737 sq. ft.
UNIT 407	669 sq. ft.
UNIT 408	1056 sq. ft.
UNIT 409	722 sq. ft.
UNIT 410	651 sq. ft.
UNIT 411	764 sq. ft.
UNIT 412	1255 sq. ft.
UNIT 413	

ALL AREAS NOT SHOWN HEREON AS A UNIT OR LIMITED COMMON AREA (LCA) ARE COMMON AREA.

I HEREBY CERTIFY THAT THIS FLOOR PLAN IS ACCURATE AND COMPLIES WITH RSA 456-B:20. IF ALL UNITS AND LIMITED COMMON AREA OR PORTIONS THEREOF DEPICTED HEREON AS COMPLETED HAVE BEEN SUBSTANTIALLY COMPLETED, EXCEPT AS NOTED.



Thomas S. Johnson  
 REGISTERED ARCHITECT

5-14-25  
 DATE

GRAPHIC SCALE  
 0 10 20 30 FEET

**BUILDING FLOOR PLAN:**

Residences at Foundry Place Condominium,  
 88-89 Foundry Place,  
 Portsmouth, NH 03801

OWNER OF RECORD:  
 Residences at Foundry Place, LLC  
 One Cate Street, Portsmouth, NH 03801

**1 Fourth Floor Plan**  
 18" x 11"

PLAN PREPARED BY:

THA Architects, LLC

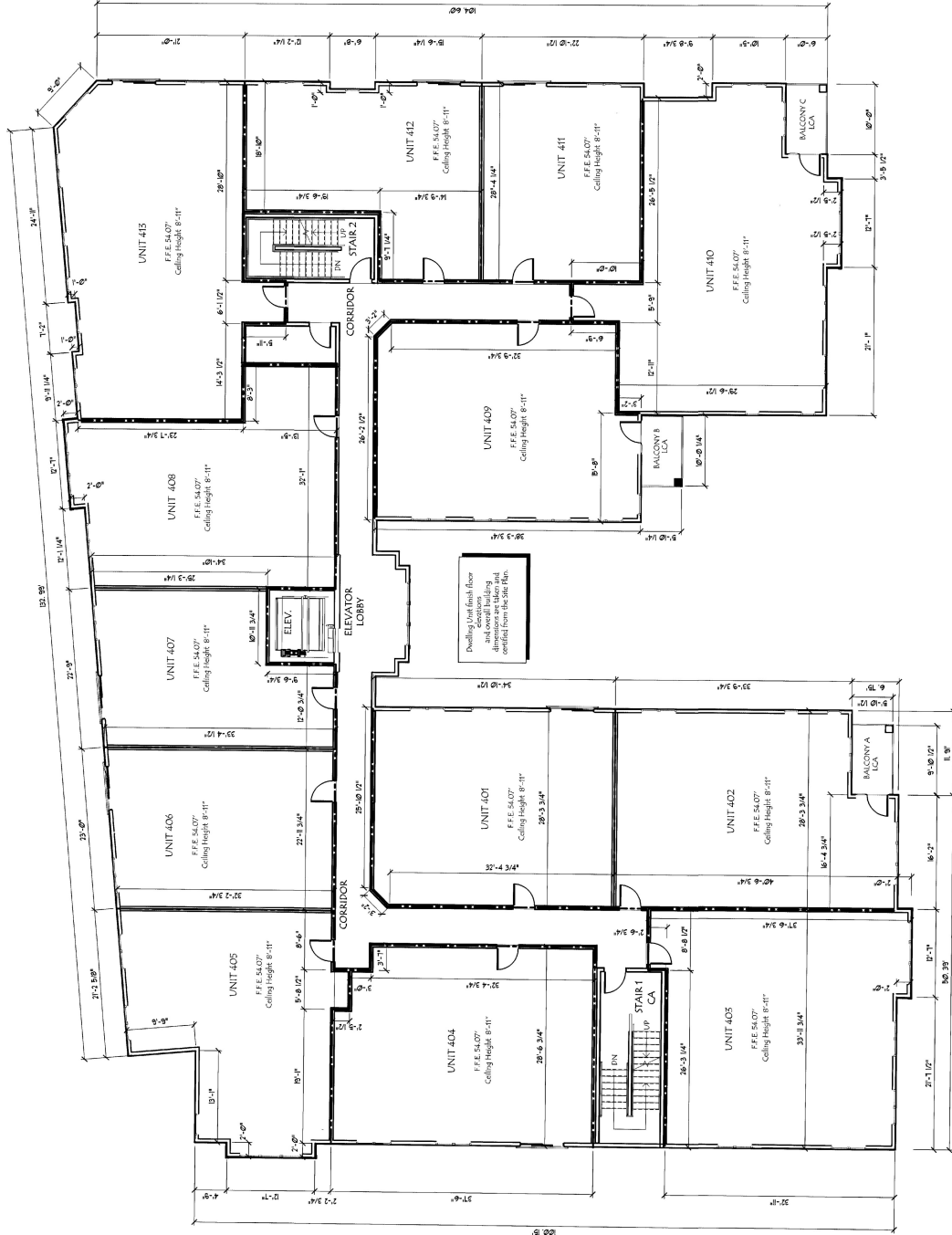
P.O. BOX 88 - STRATHAM, NH 03886 - (603) 770-2481

DATED/DRAWN BY:  
 March 14, 2025/TH

SCALE:  
 AS SHOWN

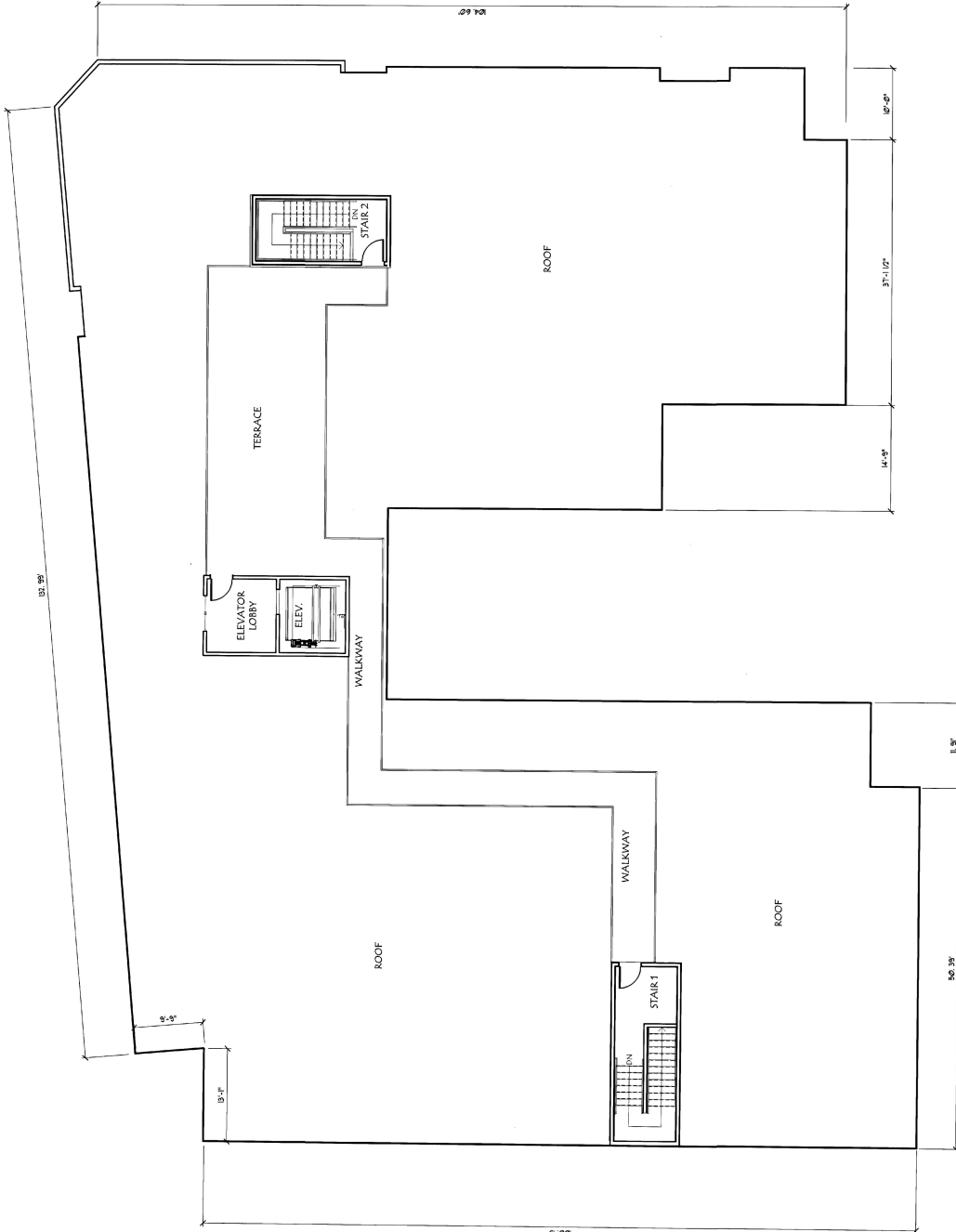
SHEET NO:  
 5 OF 6

JOB NO:  
 23100



**D-4495b** sheet 5 of 6

D-44956  
 07/11/2025 12:47:45 PM  
 Plan of Record, LISP, Amount: 2500  
 PLAN  
 150.00  
*Christy J. Arvey*



**LEGEND**

- ▲ ENTRY
- LCA LIMITED COMMON AREA
- F.F.E. FINISH FLOOR ELEVATION
- UNIT BOUNDARY (PERIMETER)
- HOME OWNERS ASSOCIATION (COMMON AREA)

**SQUARE FOOTAGE**

TERRACE 727 sq. ft.

ALL AREAS NOT SHOWN HEREON AS A UNIT OR LIMITED COMMON AREA (LCA) ARE COMMON AREA.

I HEREBY CERTIFY THAT THIS FLOOR PLAN IS ACCURATE AND COMPLIES WITH RSA 356-B:20. II. ALL UNITS AND LIMITED COMMON AREA OR PORTIONS THEREOF DEPICTED HEREON AS COMPLETED HAVE BEEN SUBSTANTIALLY COMPLETED, EXCEPT AS NOTED.



*Thomas J. Arvey*  
 REGISTERED ARCHITECT  
 9/10/25 DATE



**BUILDING FLOOR PLAN:**  
 Residences at Foundry Place Condominium,  
 88-89 Foundry Place,  
 Portsmouth, NH 03801

**OWNER of RECORD:**  
 Residences at Foundry Place, LLC  
 One Cate Street, Portsmouth, NH 03801

PLAN PREPARED BY:  
**THA Architects, LLC**  
 P.O. BOX 88 - STRATHAM, NH 03885 - (603) 770-2481

DATE DRAWN BY: March 10, 2025/TH	SCALE: AS SHOWN	SHEET NO: 6 OF 6	JOB NO: 23010
-------------------------------------	--------------------	---------------------	------------------

**1** Roof Floor Plan  
 1/8" = 1'-0"

**D-44956** Sheet 6 of 6