

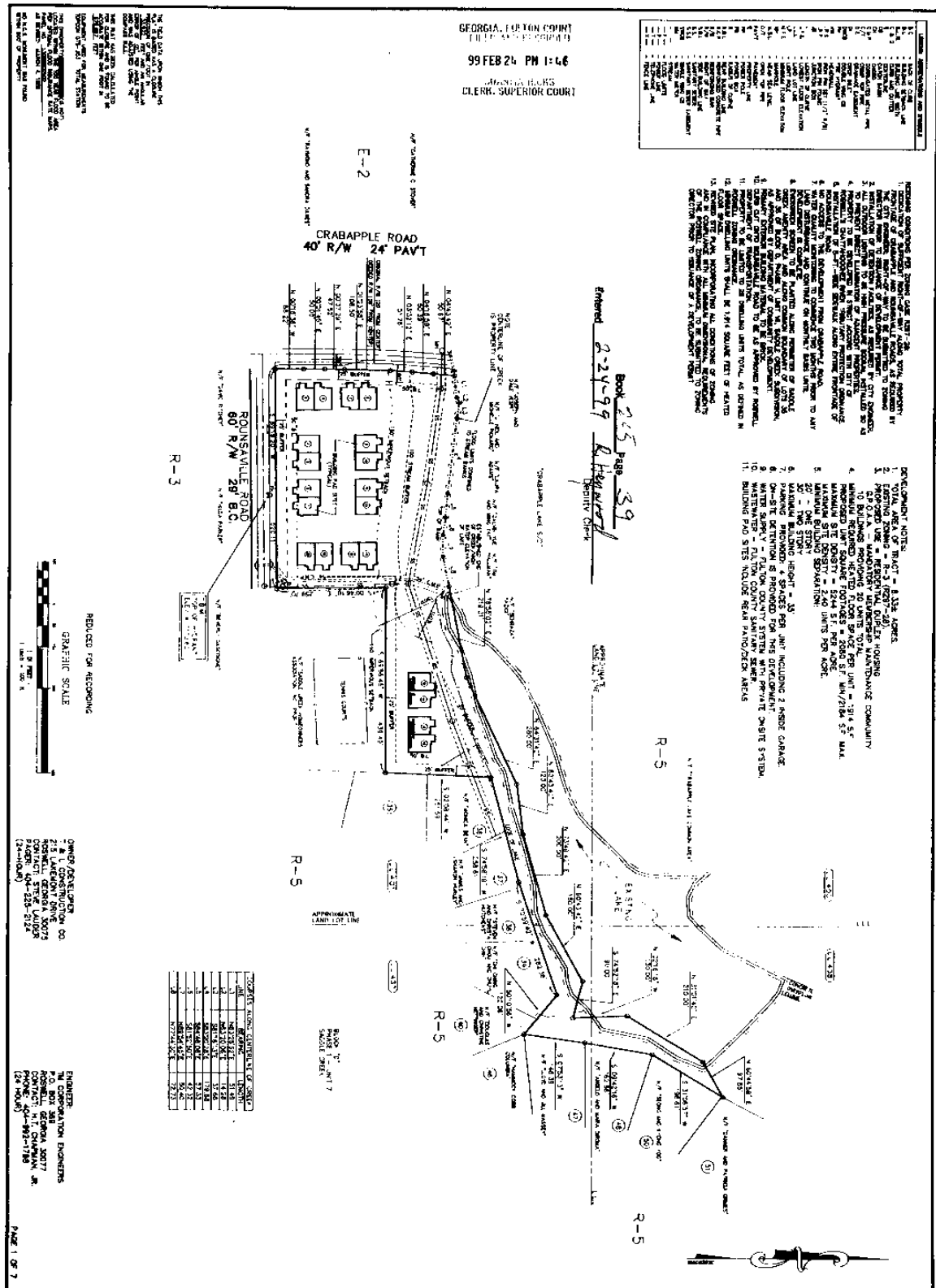
GEORGIA, FULTON COUNTY
 CLERK, SUPERIOR COURT
 99 FEB 24 PM 1:46

REVISIONS

NO.	DATE	DESCRIPTION
1	1/28/99	ISSUED FOR RECORD
2	2/1/99	REVISIONS TO PERMITS
3	2/1/99	REVISIONS TO PERMITS
4	2/1/99	REVISIONS TO PERMITS
5	2/1/99	REVISIONS TO PERMITS
6	2/1/99	REVISIONS TO PERMITS
7	2/1/99	REVISIONS TO PERMITS
8	2/1/99	REVISIONS TO PERMITS
9	2/1/99	REVISIONS TO PERMITS
10	2/1/99	REVISIONS TO PERMITS
11	2/1/99	REVISIONS TO PERMITS
12	2/1/99	REVISIONS TO PERMITS
13	2/1/99	REVISIONS TO PERMITS
14	2/1/99	REVISIONS TO PERMITS
15	2/1/99	REVISIONS TO PERMITS
16	2/1/99	REVISIONS TO PERMITS
17	2/1/99	REVISIONS TO PERMITS
18	2/1/99	REVISIONS TO PERMITS
19	2/1/99	REVISIONS TO PERMITS
20	2/1/99	REVISIONS TO PERMITS
21	2/1/99	REVISIONS TO PERMITS
22	2/1/99	REVISIONS TO PERMITS
23	2/1/99	REVISIONS TO PERMITS
24	2/1/99	REVISIONS TO PERMITS
25	2/1/99	REVISIONS TO PERMITS
26	2/1/99	REVISIONS TO PERMITS
27	2/1/99	REVISIONS TO PERMITS
28	2/1/99	REVISIONS TO PERMITS
29	2/1/99	REVISIONS TO PERMITS
30	2/1/99	REVISIONS TO PERMITS
31	2/1/99	REVISIONS TO PERMITS
32	2/1/99	REVISIONS TO PERMITS
33	2/1/99	REVISIONS TO PERMITS
34	2/1/99	REVISIONS TO PERMITS
35	2/1/99	REVISIONS TO PERMITS
36	2/1/99	REVISIONS TO PERMITS
37	2/1/99	REVISIONS TO PERMITS
38	2/1/99	REVISIONS TO PERMITS
39	2/1/99	REVISIONS TO PERMITS
40	2/1/99	REVISIONS TO PERMITS
41	2/1/99	REVISIONS TO PERMITS
42	2/1/99	REVISIONS TO PERMITS
43	2/1/99	REVISIONS TO PERMITS
44	2/1/99	REVISIONS TO PERMITS
45	2/1/99	REVISIONS TO PERMITS
46	2/1/99	REVISIONS TO PERMITS
47	2/1/99	REVISIONS TO PERMITS
48	2/1/99	REVISIONS TO PERMITS
49	2/1/99	REVISIONS TO PERMITS
50	2/1/99	REVISIONS TO PERMITS

- RECORDING CONDITIONS FOR RECORDING USE (R-1) - 28**
1. RECORDING OF SALES AND MORTGAGES OF REAL ESTATE SHALL BE SUBJECT TO THE CITY RECORDING ACT AND TO THE RECORDING ACT IN GENERAL.
 2. RECORDING OF SALES AND MORTGAGES OF REAL ESTATE SHALL BE SUBJECT TO THE RECORDING ACT IN GENERAL AND TO THE RECORDING ACT IN GENERAL.
 3. RECORDING OF SALES AND MORTGAGES OF REAL ESTATE SHALL BE SUBJECT TO THE RECORDING ACT IN GENERAL AND TO THE RECORDING ACT IN GENERAL.
 4. RECORDING OF SALES AND MORTGAGES OF REAL ESTATE SHALL BE SUBJECT TO THE RECORDING ACT IN GENERAL AND TO THE RECORDING ACT IN GENERAL.
 5. RECORDING OF SALES AND MORTGAGES OF REAL ESTATE SHALL BE SUBJECT TO THE RECORDING ACT IN GENERAL AND TO THE RECORDING ACT IN GENERAL.
 6. RECORDING OF SALES AND MORTGAGES OF REAL ESTATE SHALL BE SUBJECT TO THE RECORDING ACT IN GENERAL AND TO THE RECORDING ACT IN GENERAL.
 7. RECORDING OF SALES AND MORTGAGES OF REAL ESTATE SHALL BE SUBJECT TO THE RECORDING ACT IN GENERAL AND TO THE RECORDING ACT IN GENERAL.
 8. RECORDING OF SALES AND MORTGAGES OF REAL ESTATE SHALL BE SUBJECT TO THE RECORDING ACT IN GENERAL AND TO THE RECORDING ACT IN GENERAL.
 9. RECORDING OF SALES AND MORTGAGES OF REAL ESTATE SHALL BE SUBJECT TO THE RECORDING ACT IN GENERAL AND TO THE RECORDING ACT IN GENERAL.
 10. RECORDING OF SALES AND MORTGAGES OF REAL ESTATE SHALL BE SUBJECT TO THE RECORDING ACT IN GENERAL AND TO THE RECORDING ACT IN GENERAL.
 11. RECORDING OF SALES AND MORTGAGES OF REAL ESTATE SHALL BE SUBJECT TO THE RECORDING ACT IN GENERAL AND TO THE RECORDING ACT IN GENERAL.
- DEVELOPMENT NOTES:**
1. TOTAL AREA OF TRACT - 8.55 ACRES.
 2. ZONING DISTRICT - R-5 (R-5.1).
 3. RECORDING OF SALES AND MORTGAGES OF REAL ESTATE SHALL BE SUBJECT TO THE RECORDING ACT IN GENERAL AND TO THE RECORDING ACT IN GENERAL.
 4. RECORDING OF SALES AND MORTGAGES OF REAL ESTATE SHALL BE SUBJECT TO THE RECORDING ACT IN GENERAL AND TO THE RECORDING ACT IN GENERAL.
 5. RECORDING OF SALES AND MORTGAGES OF REAL ESTATE SHALL BE SUBJECT TO THE RECORDING ACT IN GENERAL AND TO THE RECORDING ACT IN GENERAL.
 6. RECORDING OF SALES AND MORTGAGES OF REAL ESTATE SHALL BE SUBJECT TO THE RECORDING ACT IN GENERAL AND TO THE RECORDING ACT IN GENERAL.
 7. RECORDING OF SALES AND MORTGAGES OF REAL ESTATE SHALL BE SUBJECT TO THE RECORDING ACT IN GENERAL AND TO THE RECORDING ACT IN GENERAL.
 8. RECORDING OF SALES AND MORTGAGES OF REAL ESTATE SHALL BE SUBJECT TO THE RECORDING ACT IN GENERAL AND TO THE RECORDING ACT IN GENERAL.
 9. RECORDING OF SALES AND MORTGAGES OF REAL ESTATE SHALL BE SUBJECT TO THE RECORDING ACT IN GENERAL AND TO THE RECORDING ACT IN GENERAL.
 10. RECORDING OF SALES AND MORTGAGES OF REAL ESTATE SHALL BE SUBJECT TO THE RECORDING ACT IN GENERAL AND TO THE RECORDING ACT IN GENERAL.
 11. RECORDING OF SALES AND MORTGAGES OF REAL ESTATE SHALL BE SUBJECT TO THE RECORDING ACT IN GENERAL AND TO THE RECORDING ACT IN GENERAL.

Book 215 Page 39
 Entered 2-24-99 R. H. HARRIS
 Deputy Clerk



FINAL PLAT FOR
THE ENCLAVE AT SADDLE CREEK
 DATE: FEBRUARY 5, 1999

LOCATED BY:
 LAND LOT(S): 401, 437, 438
 DISTRICT: 1, SECTION: 2
 CITY OF: ROSWELL
 COUNTY OF: FULTON
 STATE OF: GEORGIA

REVISIONS:

BRUNBELOW-REESE & ASSOC., INC.
 LAND SURVEYING SERVICES
 GEORGIA REGISTRATION NO. 2072
 P.O. BOX 713
 ALPHARETTA, GEORGIA 30009-0713
 (770) 475-6877

ENGINEER:
 BRUNBELOW-REESE & ASSOC., INC.
 713 LANDPOINT DRIVE
 ROSWELL, GEORGIA 30077
 PHONE: 404-582-5127
 (24 HOURS)

DRAWN BY:
 R. H. HARRIS

DESIGNED BY:
 R. H. HARRIS

DRAWING NUMBER:
 281

DATE:
 FEBRUARY 5, 1999

3K205 PG 39

2 C B A 4 3 2

2
C
B
A
4
3
2

GEORGIA, FULTON COUNTY
FILED 99 FEB 24 PM 1:46
JUANITA HARRIS
CLERK, SUPERIOR COURT

CRABAPPLE ROAD
40' R/W 24' PAV'T

ROUNSAVILLE ROAD
60' R/W 29' B.C.

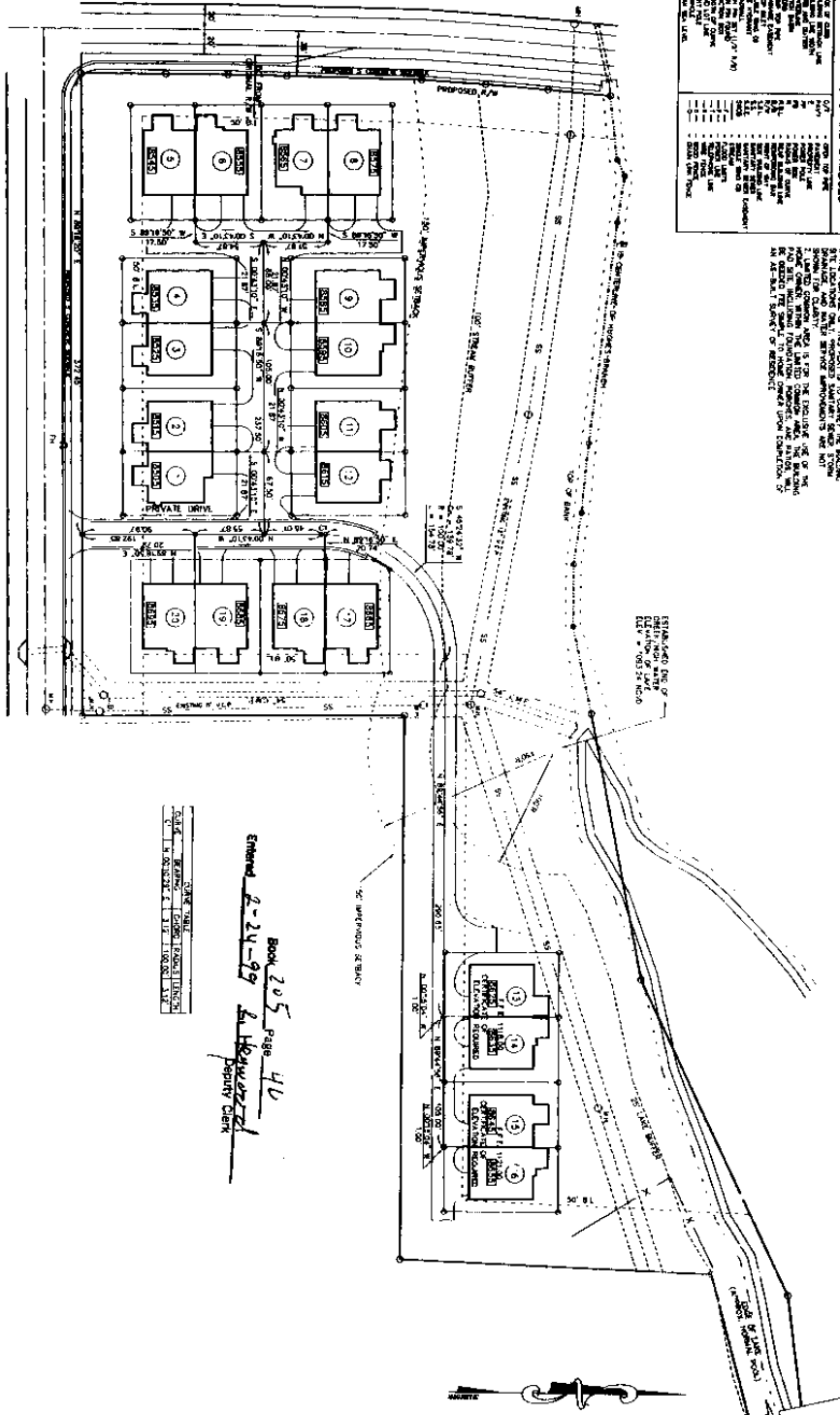
SEE SHEET 3 FOR DETAILS OF BUILDING
PAD SITES AND LIMITED COMMON AREAS

BK 205 PG 40

LEGEND: ABBREVIATIONS AND SYMBOLS

1.0	1.0	1.0	1.0
2.0	2.0	2.0	2.0
3.0	3.0	3.0	3.0
4.0	4.0	4.0	4.0
5.0	5.0	5.0	5.0
6.0	6.0	6.0	6.0
7.0	7.0	7.0	7.0
8.0	8.0	8.0	8.0
9.0	9.0	9.0	9.0
10.0	10.0	10.0	10.0
11.0	11.0	11.0	11.0
12.0	12.0	12.0	12.0
13.0	13.0	13.0	13.0
14.0	14.0	14.0	14.0
15.0	15.0	15.0	15.0
16.0	16.0	16.0	16.0
17.0	17.0	17.0	17.0
18.0	18.0	18.0	18.0
19.0	19.0	19.0	19.0
20.0	20.0	20.0	20.0
21.0	21.0	21.0	21.0
22.0	22.0	22.0	22.0
23.0	23.0	23.0	23.0
24.0	24.0	24.0	24.0
25.0	25.0	25.0	25.0
26.0	26.0	26.0	26.0
27.0	27.0	27.0	27.0
28.0	28.0	28.0	28.0
29.0	29.0	29.0	29.0
30.0	30.0	30.0	30.0
31.0	31.0	31.0	31.0
32.0	32.0	32.0	32.0
33.0	33.0	33.0	33.0
34.0	34.0	34.0	34.0
35.0	35.0	35.0	35.0
36.0	36.0	36.0	36.0
37.0	37.0	37.0	37.0
38.0	38.0	38.0	38.0
39.0	39.0	39.0	39.0
40.0	40.0	40.0	40.0
41.0	41.0	41.0	41.0
42.0	42.0	42.0	42.0
43.0	43.0	43.0	43.0
44.0	44.0	44.0	44.0
45.0	45.0	45.0	45.0
46.0	46.0	46.0	46.0
47.0	47.0	47.0	47.0
48.0	48.0	48.0	48.0
49.0	49.0	49.0	49.0
50.0	50.0	50.0	50.0
51.0	51.0	51.0	51.0
52.0	52.0	52.0	52.0
53.0	53.0	53.0	53.0
54.0	54.0	54.0	54.0
55.0	55.0	55.0	55.0
56.0	56.0	56.0	56.0
57.0	57.0	57.0	57.0
58.0	58.0	58.0	58.0
59.0	59.0	59.0	59.0
60.0	60.0	60.0	60.0
61.0	61.0	61.0	61.0
62.0	62.0	62.0	62.0
63.0	63.0	63.0	63.0
64.0	64.0	64.0	64.0
65.0	65.0	65.0	65.0
66.0	66.0	66.0	66.0
67.0	67.0	67.0	67.0
68.0	68.0	68.0	68.0
69.0	69.0	69.0	69.0
70.0	70.0	70.0	70.0
71.0	71.0	71.0	71.0
72.0	72.0	72.0	72.0
73.0	73.0	73.0	73.0
74.0	74.0	74.0	74.0
75.0	75.0	75.0	75.0
76.0	76.0	76.0	76.0
77.0	77.0	77.0	77.0
78.0	78.0	78.0	78.0
79.0	79.0	79.0	79.0
80.0	80.0	80.0	80.0
81.0	81.0	81.0	81.0
82.0	82.0	82.0	82.0
83.0	83.0	83.0	83.0
84.0	84.0	84.0	84.0
85.0	85.0	85.0	85.0
86.0	86.0	86.0	86.0
87.0	87.0	87.0	87.0
88.0	88.0	88.0	88.0
89.0	89.0	89.0	89.0
90.0	90.0	90.0	90.0
91.0	91.0	91.0	91.0
92.0	92.0	92.0	92.0
93.0	93.0	93.0	93.0
94.0	94.0	94.0	94.0
95.0	95.0	95.0	95.0
96.0	96.0	96.0	96.0
97.0	97.0	97.0	97.0
98.0	98.0	98.0	98.0
99.0	99.0	99.0	99.0
100.0	100.0	100.0	100.0

NOTICE: DRAWING OF THIS SITE IS TO BE USED FOR THE PURPOSE OF THE LOCATION ONLY. PROPOSED BUILDING PAD SITES AND COMMON AREAS ARE NOT TO BE CONSIDERED AS A GUARANTEE OF THE ACCURACY OF THE INFORMATION AND IS FOR THE EXCLUSIVE USE OF THE CLIENT. THE CLIENT SHALL BE RESPONSIBLE FOR OBTAINING ALL NECESSARY PERMITS AND APPROVALS FROM THE APPROPRIATE AGENCIES AND AUTHORITIES. THE CLIENT SHALL BE RESPONSIBLE FOR OBTAINING ALL NECESSARY PERMITS AND APPROVALS FROM THE APPROPRIATE AGENCIES AND AUTHORITIES. THE CLIENT SHALL BE RESPONSIBLE FOR OBTAINING ALL NECESSARY PERMITS AND APPROVALS FROM THE APPROPRIATE AGENCIES AND AUTHORITIES.

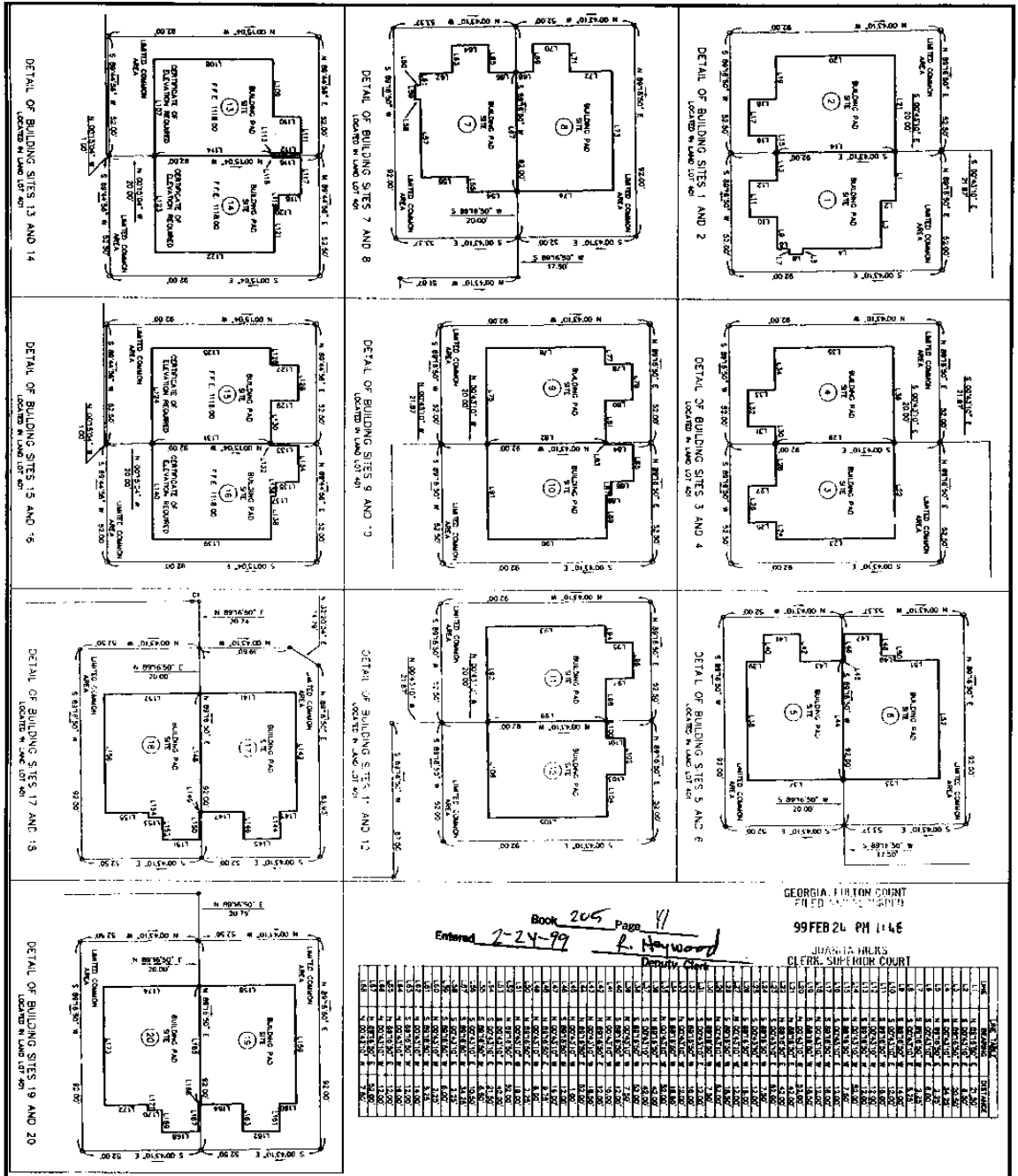


<p>FINAL PLAN FOR THE ENCLAVE AT SADDLE CREEK</p> <p>DATE: FEBRUARY 5, 1999</p>	<p>LOCATED IN: LAND LOT(S): 401,437,438 DISTRICT: 1, SECTION: 2 CITY OF: ROSWELL COUNTY OF: FULTON STATE OF: GEORGIA</p>	<p>REVISIONS: 2-24-99, TO ADD STREET ADDRESSES</p>		<p>BRUMBELOW-REESE & ASSOC., INC. LAND SURVEYING SERVICES GEORGIA REGISTRATION NO. 2072 P.O. BOX 713 ALPHARETTA, GEORGIA 30008-0713 (770) 475-8817</p>
--	--	--	--	---

2 3 4 10 5 10 4 3 3 2

B A A B C

3K 205 PG 41



NO.	AREA	PERCENTAGE
1	1.13	1.13
2	1.13	1.13
3	1.13	1.13
4	1.13	1.13
5	1.13	1.13
6	1.13	1.13
7	1.13	1.13
8	1.13	1.13
9	1.13	1.13
10	1.13	1.13
11	1.13	1.13
12	1.13	1.13
13	1.13	1.13
14	1.13	1.13
15	1.13	1.13
16	1.13	1.13
17	1.13	1.13
18	1.13	1.13
19	1.13	1.13
20	1.13	1.13
21	1.13	1.13
22	1.13	1.13
23	1.13	1.13
24	1.13	1.13
25	1.13	1.13
26	1.13	1.13
27	1.13	1.13
28	1.13	1.13
29	1.13	1.13
30	1.13	1.13
31	1.13	1.13
32	1.13	1.13
33	1.13	1.13
34	1.13	1.13
35	1.13	1.13
36	1.13	1.13
37	1.13	1.13
38	1.13	1.13
39	1.13	1.13
40	1.13	1.13
41	1.13	1.13
42	1.13	1.13
43	1.13	1.13
44	1.13	1.13
45	1.13	1.13
46	1.13	1.13
47	1.13	1.13
48	1.13	1.13
49	1.13	1.13
50	1.13	1.13
51	1.13	1.13
52	1.13	1.13
53	1.13	1.13
54	1.13	1.13
55	1.13	1.13
56	1.13	1.13
57	1.13	1.13
58	1.13	1.13
59	1.13	1.13
60	1.13	1.13
61	1.13	1.13
62	1.13	1.13
63	1.13	1.13
64	1.13	1.13
65	1.13	1.13
66	1.13	1.13
67	1.13	1.13
68	1.13	1.13
69	1.13	1.13
70	1.13	1.13
71	1.13	1.13
72	1.13	1.13
73	1.13	1.13
74	1.13	1.13
75	1.13	1.13
76	1.13	1.13
77	1.13	1.13
78	1.13	1.13
79	1.13	1.13
80	1.13	1.13
81	1.13	1.13
82	1.13	1.13
83	1.13	1.13
84	1.13	1.13
85	1.13	1.13
86	1.13	1.13
87	1.13	1.13
88	1.13	1.13
89	1.13	1.13
90	1.13	1.13
91	1.13	1.13
92	1.13	1.13
93	1.13	1.13
94	1.13	1.13
95	1.13	1.13
96	1.13	1.13
97	1.13	1.13
98	1.13	1.13
99	1.13	1.13
100	1.13	1.13

FINAL PLAT FOR
THE ENCLAVE AT SADDLE CREEK
 DATE: FEBRUARY 5, 1988

LOCATED IN:
 LAND LOT(S): 401, 437, 438
 DISTRICT: 1, SECTION: 2
 CITY OF ROSWELL
 COUNTY OF FULTON
 STATE OF GEORGIA

BRUMBELOW-REESE & ASSOC., INC.
 LAND SURVEYING SERVICES
 GEORGIA REGISTRATION NO. 2072
 P.O. BOX 713
 ALPHARETTA, GEORGIA 30008-0713
 (770) 475-8877

GEORGIA FULTON COUNTY
 CLERK SUPERIOR COURT
 99 FEB 24 PM 1:48
 Book 205 Page 41
 Entered 2-24-99 R. Hayward
 Deputy Clerk

