



5348 ST JAMES PL

Frederick, MD 21703



Bobbi Prescott
REMAX
RESULTS

Associate Broker, Team Leader, GRI
301-514-6163 (direct) • 301-698-5005 (broker)
bobbiprescott@gmail.com
www.bobbiprescott.com



5 beds



2 full, 2 half baths

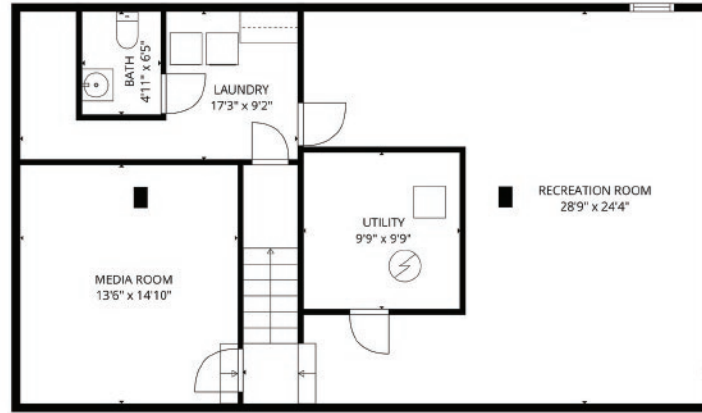
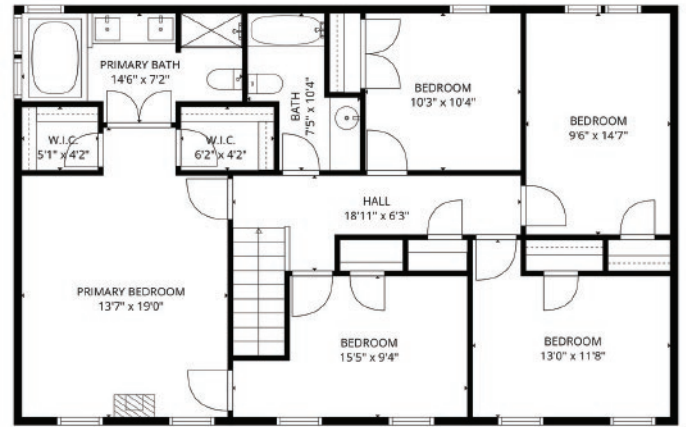
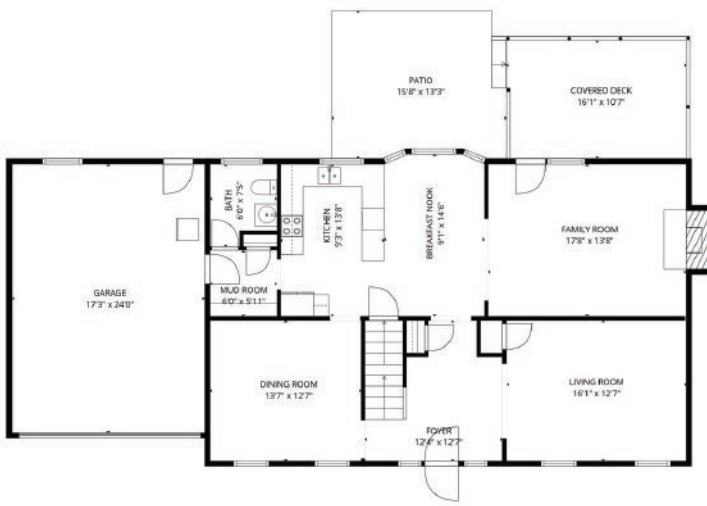


3,220 sq ft



Year Built: 1993





Where Everyday Living Feels Easy - and Entertaining Even Better

Welcome to 5348 St. James Place, a Kingsbrook gem in southern Frederick County with no city taxes. This spacious home offers five bedrooms and 2,728 square feet above grade, plus a finished lower level, all set on a generous 0.26-acre corner lot. Designed for easy living, the floor plan flows naturally from the mudroom off the two-car garage into the heart of the home—where the kitchen features newer granite countertops, sink, and stainless appliances, connecting seamlessly to the dining and family rooms. Whether it's a quiet evening or a full house, the layout just works. Step outside and the lifestyle really shines. Just off the family room, the rear covered porch leads to a beautifully designed backyard featuring both a deck and paver patio—creating a private, inviting setting for morning coffee, evening unwinding, or weekend gatherings. It's no surprise the sellers say this outdoor space has been their favorite place to relax and entertain. With direct access from the garage to the backyard, everyday living and entertaining feel effortless. Upstairs, five spacious bedrooms—including a flexible room off the primary suite—offer comfort, versatility, and room to grow. The primary suite features vaulted ceilings and an updated bath, creating a peaceful retreat at the end of the day. The finished basement expands your options even further with a large rec room, a dedicated media room perfect for movie nights, a half bath, and plenty of storage. Natural gas heat, a brand-new HVAC system (2026), hot water heater (2025), and roof (2024) provide efficiency and peace of mind. Living in Kingsbrook means more than just a home—it's a lifestyle. Enjoy community amenities including a pool, playgrounds, basketball, tennis, and pickleball courts, all just minutes from shopping, dining, and major commuter routes, including I-270, I-70, Route 15, and 340, along with MARC train access.