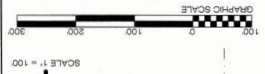




FINAL SURVEY

07-23-2011



LEGEND

1.00'	1/8" = 1'-0"	1/8" = 1'-0"
2.00'	1/4" = 1'-0"	1/4" = 1'-0"
3.00'	3/16" = 1'-0"	3/16" = 1'-0"
4.00'	1/4" = 1'-0"	1/4" = 1'-0"
5.00'	5/16" = 1'-0"	5/16" = 1'-0"
6.00'	3/8" = 1'-0"	3/8" = 1'-0"
7.00'	7/16" = 1'-0"	7/16" = 1'-0"
8.00'	1/2" = 1'-0"	1/2" = 1'-0"
9.00'	9/16" = 1'-0"	9/16" = 1'-0"
10.00'	5/8" = 1'-0"	5/8" = 1'-0"
11.00'	11/16" = 1'-0"	11/16" = 1'-0"
12.00'	3/4" = 1'-0"	3/4" = 1'-0"
13.00'	13/16" = 1'-0"	13/16" = 1'-0"
14.00'	7/8" = 1'-0"	7/8" = 1'-0"
15.00'	15/16" = 1'-0"	15/16" = 1'-0"
16.00'	1" = 1'-0"	1" = 1'-0"
17.00'	1 1/16" = 1'-0"	1 1/16" = 1'-0"
18.00'	1 1/8" = 1'-0"	1 1/8" = 1'-0"
19.00'	1 1/4" = 1'-0"	1 1/4" = 1'-0"
20.00'	1 1/2" = 1'-0"	1 1/2" = 1'-0"
21.00'	1 5/8" = 1'-0"	1 5/8" = 1'-0"
22.00'	1 3/4" = 1'-0"	1 3/4" = 1'-0"
23.00'	1 7/8" = 1'-0"	1 7/8" = 1'-0"
24.00'	2" = 1'-0"	2" = 1'-0"
25.00'	2 1/16" = 1'-0"	2 1/16" = 1'-0"
26.00'	2 1/8" = 1'-0"	2 1/8" = 1'-0"
27.00'	2 1/4" = 1'-0"	2 1/4" = 1'-0"
28.00'	2 1/2" = 1'-0"	2 1/2" = 1'-0"
29.00'	2 5/8" = 1'-0"	2 5/8" = 1'-0"
30.00'	2 3/4" = 1'-0"	2 3/4" = 1'-0"
31.00'	2 7/8" = 1'-0"	2 7/8" = 1'-0"
32.00'	3" = 1'-0"	3" = 1'-0"
33.00'	3 1/16" = 1'-0"	3 1/16" = 1'-0"
34.00'	3 1/8" = 1'-0"	3 1/8" = 1'-0"
35.00'	3 1/4" = 1'-0"	3 1/4" = 1'-0"
36.00'	3 1/2" = 1'-0"	3 1/2" = 1'-0"
37.00'	3 5/8" = 1'-0"	3 5/8" = 1'-0"
38.00'	3 3/4" = 1'-0"	3 3/4" = 1'-0"
39.00'	3 7/8" = 1'-0"	3 7/8" = 1'-0"
40.00'	4" = 1'-0"	4" = 1'-0"
41.00'	4 1/16" = 1'-0"	4 1/16" = 1'-0"
42.00'	4 1/8" = 1'-0"	4 1/8" = 1'-0"
43.00'	4 1/4" = 1'-0"	4 1/4" = 1'-0"
44.00'	4 1/2" = 1'-0"	4 1/2" = 1'-0"
45.00'	4 5/8" = 1'-0"	4 5/8" = 1'-0"
46.00'	4 3/4" = 1'-0"	4 3/4" = 1'-0"
47.00'	4 7/8" = 1'-0"	4 7/8" = 1'-0"
48.00'	5" = 1'-0"	5" = 1'-0"
49.00'	5 1/16" = 1'-0"	5 1/16" = 1'-0"
50.00'	5 1/8" = 1'-0"	5 1/8" = 1'-0"
51.00'	5 1/4" = 1'-0"	5 1/4" = 1'-0"
52.00'	5 1/2" = 1'-0"	5 1/2" = 1'-0"
53.00'	5 5/8" = 1'-0"	5 5/8" = 1'-0"
54.00'	5 3/4" = 1'-0"	5 3/4" = 1'-0"
55.00'	5 7/8" = 1'-0"	5 7/8" = 1'-0"
56.00'	6" = 1'-0"	6" = 1'-0"
57.00'	6 1/16" = 1'-0"	6 1/16" = 1'-0"
58.00'	6 1/8" = 1'-0"	6 1/8" = 1'-0"
59.00'	6 1/4" = 1'-0"	6 1/4" = 1'-0"
60.00'	6 1/2" = 1'-0"	6 1/2" = 1'-0"
61.00'	6 5/8" = 1'-0"	6 5/8" = 1'-0"
62.00'	6 3/4" = 1'-0"	6 3/4" = 1'-0"
63.00'	6 7/8" = 1'-0"	6 7/8" = 1'-0"
64.00'	7" = 1'-0"	7" = 1'-0"
65.00'	7 1/16" = 1'-0"	7 1/16" = 1'-0"
66.00'	7 1/8" = 1'-0"	7 1/8" = 1'-0"
67.00'	7 1/4" = 1'-0"	7 1/4" = 1'-0"
68.00'	7 1/2" = 1'-0"	7 1/2" = 1'-0"
69.00'	7 5/8" = 1'-0"	7 5/8" = 1'-0"
70.00'	7 3/4" = 1'-0"	7 3/4" = 1'-0"
71.00'	7 7/8" = 1'-0"	7 7/8" = 1'-0"
72.00'	8" = 1'-0"	8" = 1'-0"
73.00'	8 1/16" = 1'-0"	8 1/16" = 1'-0"
74.00'	8 1/8" = 1'-0"	8 1/8" = 1'-0"
75.00'	8 1/4" = 1'-0"	8 1/4" = 1'-0"
76.00'	8 1/2" = 1'-0"	8 1/2" = 1'-0"
77.00'	8 5/8" = 1'-0"	8 5/8" = 1'-0"
78.00'	8 3/4" = 1'-0"	8 3/4" = 1'-0"
79.00'	8 7/8" = 1'-0"	8 7/8" = 1'-0"
80.00'	9" = 1'-0"	9" = 1'-0"
81.00'	9 1/16" = 1'-0"	9 1/16" = 1'-0"
82.00'	9 1/8" = 1'-0"	9 1/8" = 1'-0"
83.00'	9 1/4" = 1'-0"	9 1/4" = 1'-0"
84.00'	9 1/2" = 1'-0"	9 1/2" = 1'-0"
85.00'	9 5/8" = 1'-0"	9 5/8" = 1'-0"
86.00'	9 3/4" = 1'-0"	9 3/4" = 1'-0"
87.00'	9 7/8" = 1'-0"	9 7/8" = 1'-0"
88.00'	10" = 1'-0"	10" = 1'-0"
89.00'	10 1/16" = 1'-0"	10 1/16" = 1'-0"
90.00'	10 1/8" = 1'-0"	10 1/8" = 1'-0"
91.00'	10 1/4" = 1'-0"	10 1/4" = 1'-0"
92.00'	10 1/2" = 1'-0"	10 1/2" = 1'-0"
93.00'	10 5/8" = 1'-0"	10 5/8" = 1'-0"
94.00'	10 3/4" = 1'-0"	10 3/4" = 1'-0"
95.00'	10 7/8" = 1'-0"	10 7/8" = 1'-0"
96.00'	11" = 1'-0"	11" = 1'-0"
97.00'	11 1/16" = 1'-0"	11 1/16" = 1'-0"
98.00'	11 1/8" = 1'-0"	11 1/8" = 1'-0"
99.00'	11 1/4" = 1'-0"	11 1/4" = 1'-0"
100.00'	11 1/2" = 1'-0"	11 1/2" = 1'-0"

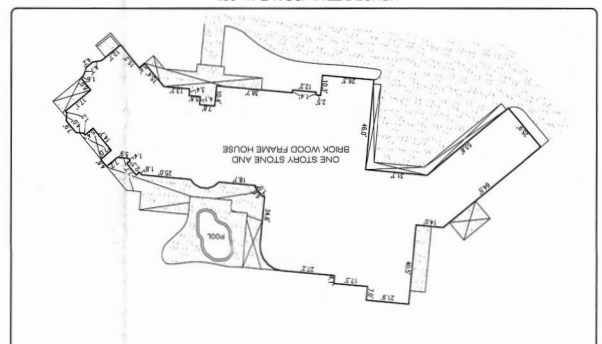
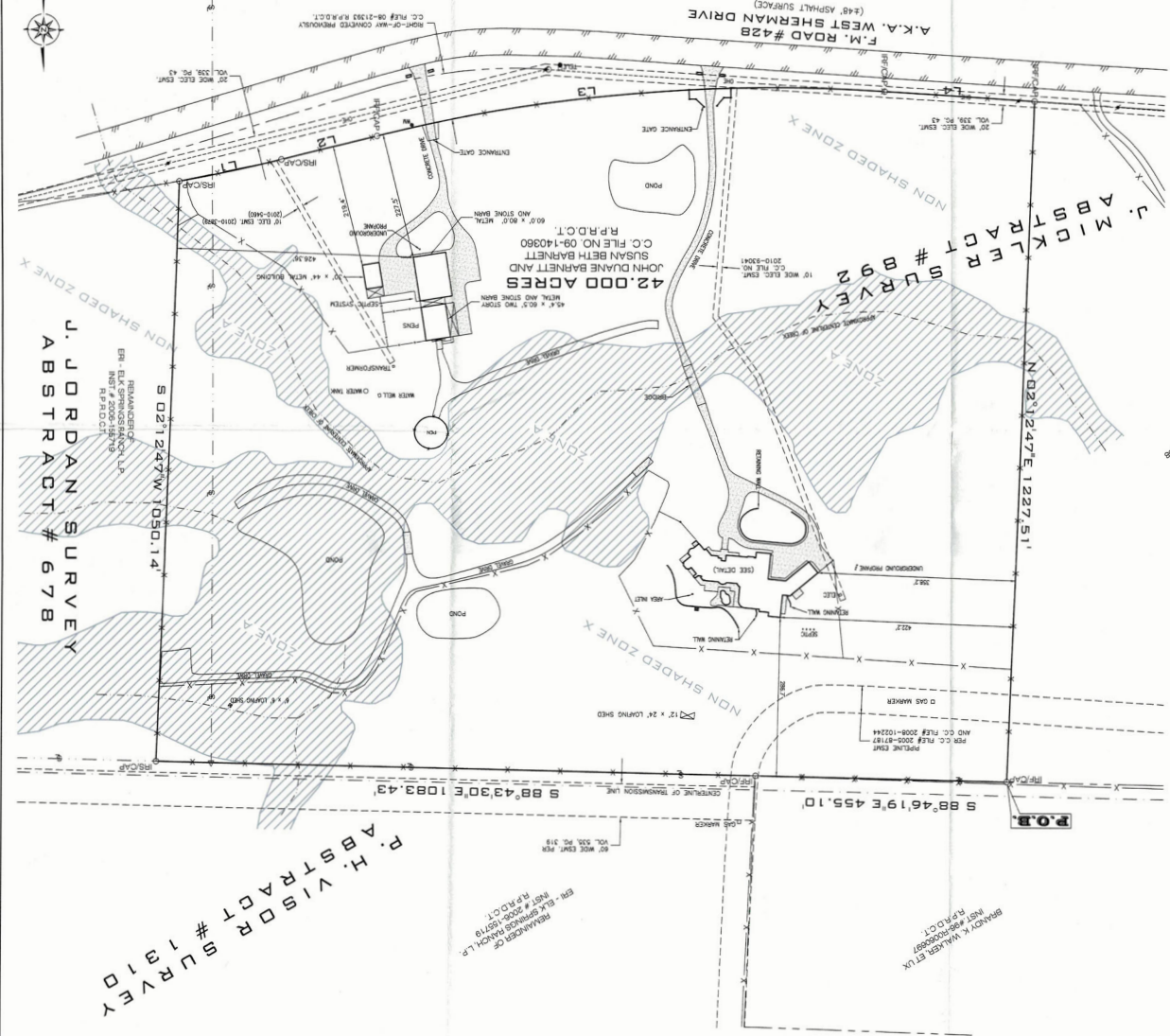
FLOOD STATEMENT: I HAVE EXAMINED THE F.F.M. FLOOD INSURANCE RATE MAP FOR THE DETON COUNTY, TEXAS, COMMUNITY NUMBER 48074, EFFECTIVE DATE 04-18-2011 AND THAT MAP INDICATES THAT FLOODING OR FLOOD DAMAGE ON RAISE OCCASIONS GREATER FLOODS CAN AND WILL OCCUR FROM FLOODING OR FLOOD DAMAGE ON RAISE OCCASIONS GREATER FLOODS CAN AND WILL OCCUR STATEMENT DOES NOT MEAN THAT THE PROPERTY AND/OR THEREON WILL BE FREE FROM FLOODING OR FLOOD DAMAGE ON RAISE OCCASIONS GREATER FLOODS CAN AND WILL OCCUR SHALL NOT CREATE LIABILITY ON THE PART OF THE SURVEYOR.



J. H. WALKER
STATE OF TEXAS
NO. 4897
J. H. WALKER
STATE OF TEXAS
NO. 4897

Course	Bearing	Distance
L1	S 80° 15' 00" W	188.21'
L2	S 78° 17' 02" W	177.83'
L3	T 81° 48' 30" CA	174.48' 43"
L4	N 68° 15' 43" W	272.79'

NOTE: THIS TRACT SURVEY IS SUBJECT TO RESTRICTIONS CONTAINED IN RECORDS OF DETON COUNTY, TEXAS. NOTE: C.C. FILE # 2010-14096A, REAL PROPERTY RECORDS OF DETON COUNTY, TEXAS. NOTE: VOLUME 535, PAGE 319 AFFECTS THE SUBJECT PROPERTY BY RIGHTS OF INGRESS AND EGRESS. NOTE: C.C. FILE # 2010-48789 AND C.C. FILE # 2010-48600 AFFECT THE SUBJECT TRACT BY RIGHTS OF INGRESS AND EGRESS. NOTE: C.C. FILE # 2010-48688 REAL PROPERTY RECORDS OF DETON COUNTY, TEXAS. NOTE: C.C. FILE # 2010-49004 AFFECTS THE SUBJECT PROPERTY BY RIGHTS OF INGRESS AND EGRESS. NOTE: APPROXIMATE LOCATION OF SURVEY LINES SHOWN PER RECORD DEED RECORDS AND/OR OTHER THIRD PARTY SOURCES. NOTE: LOCATION OF ZONE A SHOWN PER F.F.M. FLOOD INSURANCE RATE MAP.



FIELD NOTES TO ALL THAT CERTAIN TRACT OF LAND SITUATE IN THE J. MICKLER SURVEY, ABSTRACT NUMBER 892, AND THE J. JORDAN SURVEY, ABSTRACT NUMBER 678, DETON COUNTY, TEXAS, AND BEING A RE-TRACED SURVEY OF THE TRACT OF LAND DESCRIBED IN COUNTY CLERK THE NUMBER 2518, DETON COUNTY, TEXAS, AND BEING MORE PARTICULARLY DESCRIBED AS FOLLOWS:
 1. A CURVE TO THE LEFT HAVING A RADIUS OF 3075.00 FEET AND AN ARC LENGTH OF 182.11 FEET, BEING SUBTENDED BY A CHORD OF SOUTH 78 DEGREES 10 MINUTES 30 SECONDS WEST A DISTANCE OF 188.18 FEET TO A WALKER TRACT.
 2. A CURVE TO THE RIGHT HAVING A RADIUS OF 2975.00 FEET AND AN ARC LENGTH OF 182.13 FEET, BEING SUBTENDED BY A CHORD OF SOUTH 78 DEGREES 10 MINUTES 30 SECONDS WEST A DISTANCE OF 177.85 FEET TO A WALKER TRACT.
 3. A CURVE TO THE LEFT HAVING A RADIUS OF 1914.33 FEET AND AN ARC LENGTH OF 92.13 FEET, BEING SUBTENDED BY A CHORD OF SOUTH 78 DEGREES 10 MINUTES 30 SECONDS WEST A DISTANCE OF 92.13 FEET TO A WALKER TRACT.
 4. A CURVE TO THE RIGHT HAVING A RADIUS OF 272.79 FEET TO A WALKER TRACT.
 5. A CURVE TO THE LEFT HAVING A RADIUS OF 272.79 FEET TO A WALKER TRACT.
 6. A CURVE TO THE RIGHT HAVING A RADIUS OF 272.79 FEET TO A WALKER TRACT.
 7. A CURVE TO THE LEFT HAVING A RADIUS OF 272.79 FEET TO A WALKER TRACT.
 8. A CURVE TO THE RIGHT HAVING A RADIUS OF 272.79 FEET TO A WALKER TRACT.
 9. A CURVE TO THE LEFT HAVING A RADIUS OF 272.79 FEET TO A WALKER TRACT.
 10. A CURVE TO THE RIGHT HAVING A RADIUS OF 272.79 FEET TO A WALKER TRACT.
 11. A CURVE TO THE LEFT HAVING A RADIUS OF 272.79 FEET TO A WALKER TRACT.
 12. A CURVE TO THE RIGHT HAVING A RADIUS OF 272.79 FEET TO A WALKER TRACT.
 13. A CURVE TO THE LEFT HAVING A RADIUS OF 272.79 FEET TO A WALKER TRACT.
 14. A CURVE TO THE RIGHT HAVING A RADIUS OF 272.79 FEET TO A WALKER TRACT.
 15. A CURVE TO THE LEFT HAVING A RADIUS OF 272.79 FEET TO A WALKER TRACT.
 16. A CURVE TO THE RIGHT HAVING A RADIUS OF 272.79 FEET TO A WALKER TRACT.
 17. A CURVE TO THE LEFT HAVING A RADIUS OF 272.79 FEET TO A WALKER TRACT.
 18. A CURVE TO THE RIGHT HAVING A RADIUS OF 272.79 FEET TO A WALKER TRACT.
 19. A CURVE TO THE LEFT HAVING A RADIUS OF 272.79 FEET TO A WALKER TRACT.
 20. A CURVE TO THE RIGHT HAVING A RADIUS OF 272.79 FEET TO A WALKER TRACT.
 21. A CURVE TO THE LEFT HAVING A RADIUS OF 272.79 FEET TO A WALKER TRACT.
 22. A CURVE TO THE RIGHT HAVING A RADIUS OF 272.79 FEET TO A WALKER TRACT.
 23. A CURVE TO THE LEFT HAVING A RADIUS OF 272.79 FEET TO A WALKER TRACT.
 24. A CURVE TO THE RIGHT HAVING A RADIUS OF 272.79 FEET TO A WALKER TRACT.
 25. A CURVE TO THE LEFT HAVING A RADIUS OF 272.79 FEET TO A WALKER TRACT.
 26. A CURVE TO THE RIGHT HAVING A RADIUS OF 272.79 FEET TO A WALKER TRACT.
 27. A CURVE TO THE LEFT HAVING A RADIUS OF 272.79 FEET TO A WALKER TRACT.
 28. A CURVE TO THE RIGHT HAVING A RADIUS OF 272.79 FEET TO A WALKER TRACT.
 29. A CURVE TO THE LEFT HAVING A RADIUS OF 272.79 FEET TO A WALKER TRACT.
 30. A CURVE TO THE RIGHT HAVING A RADIUS OF 272.79 FEET TO A WALKER TRACT.
 31. A CURVE TO THE LEFT HAVING A RADIUS OF 272.79 FEET TO A WALKER TRACT.
 32. A CURVE TO THE RIGHT HAVING A RADIUS OF 272.79 FEET TO A WALKER TRACT.
 33. A CURVE TO THE LEFT HAVING A RADIUS OF 272.79 FEET TO A WALKER TRACT.
 34. A CURVE TO THE RIGHT HAVING A RADIUS OF 272.79 FEET TO A WALKER TRACT.
 35. A CURVE TO THE LEFT HAVING A RADIUS OF 272.79 FEET TO A WALKER TRACT.
 36. A CURVE TO THE RIGHT HAVING A RADIUS OF 272.79 FEET TO A WALKER TRACT.
 37. A CURVE TO THE LEFT HAVING A RADIUS OF 272.79 FEET TO A WALKER TRACT.
 38. A CURVE TO THE RIGHT HAVING A RADIUS OF 272.79 FEET TO A WALKER TRACT.
 39. A CURVE TO THE LEFT HAVING A RADIUS OF 272.79 FEET TO A WALKER TRACT.
 40. A CURVE TO THE RIGHT HAVING A RADIUS OF 272.79 FEET TO A WALKER TRACT.
 41. A CURVE TO THE LEFT HAVING A RADIUS OF 272.79 FEET TO A WALKER TRACT.
 42. A CURVE TO THE RIGHT HAVING A RADIUS OF 272.79 FEET TO A WALKER TRACT.
 43. A CURVE TO THE LEFT HAVING A RADIUS OF 272.79 FEET TO A WALKER TRACT.
 44. A CURVE TO THE RIGHT HAVING A RADIUS OF 272.79 FEET TO A WALKER TRACT.
 45. A CURVE TO THE LEFT HAVING A RADIUS OF 272.79 FEET TO A WALKER TRACT.
 46. A CURVE TO THE RIGHT HAVING A RADIUS OF 272.79 FEET TO A WALKER TRACT.
 47. A CURVE TO THE LEFT HAVING A RADIUS OF 272.79 FEET TO A WALKER TRACT.
 48. A CURVE TO THE RIGHT HAVING A RADIUS OF 272.79 FEET TO A WALKER TRACT.
 49. A CURVE TO THE LEFT HAVING A RADIUS OF 272.79 FEET TO A WALKER TRACT.
 50. A CURVE TO THE RIGHT HAVING A RADIUS OF 272.79 FEET TO A WALKER TRACT.
 51. A CURVE TO THE LEFT HAVING A RADIUS OF 272.79 FEET TO A WALKER TRACT.
 52. A CURVE TO THE RIGHT HAVING A RADIUS OF 272.79 FEET TO A WALKER TRACT.
 53. A CURVE TO THE LEFT HAVING A RADIUS OF 272.79 FEET TO A WALKER TRACT.
 54. A CURVE TO THE RIGHT HAVING A RADIUS OF 272.79 FEET TO A WALKER TRACT.
 55. A CURVE TO THE LEFT HAVING A RADIUS OF 272.79 FEET TO A WALKER TRACT.
 56. A CURVE TO THE RIGHT HAVING A RADIUS OF 272.79 FEET TO A WALKER TRACT.
 57. A CURVE TO THE LEFT HAVING A RADIUS OF 272.79 FEET TO A WALKER TRACT.
 58. A CURVE TO THE RIGHT HAVING A RADIUS OF 272.79 FEET TO A WALKER TRACT.
 59. A CURVE TO THE LEFT HAVING A RADIUS OF 272.79 FEET TO A WALKER TRACT.
 60. A CURVE TO THE RIGHT HAVING A RADIUS OF 272.79 FEET TO A WALKER TRACT.
 61. A CURVE TO THE LEFT HAVING A RADIUS OF 272.79 FEET TO A WALKER TRACT.
 62. A CURVE TO THE RIGHT HAVING A RADIUS OF 272.79 FEET TO A WALKER TRACT.
 63. A CURVE TO THE LEFT HAVING A RADIUS OF 272.79 FEET TO A WALKER TRACT.
 64. A CURVE TO THE RIGHT HAVING A RADIUS OF 272.79 FEET TO A WALKER TRACT.
 65. A CURVE TO THE LEFT HAVING A RADIUS OF 272.79 FEET TO A WALKER TRACT.
 66. A CURVE TO THE RIGHT HAVING A RADIUS OF 272.79 FEET TO A WALKER TRACT.
 67. A CURVE TO THE LEFT HAVING A RADIUS OF 272.79 FEET TO A WALKER TRACT.
 68. A CURVE TO THE RIGHT HAVING A RADIUS OF 272.79 FEET TO A WALKER TRACT.
 69. A CURVE TO THE LEFT HAVING A RADIUS OF 272.79 FEET TO A WALKER TRACT.
 70. A CURVE TO THE RIGHT HAVING A RADIUS OF 272.79 FEET TO A WALKER TRACT.
 71. A CURVE TO THE LEFT HAVING A RADIUS OF 272.79 FEET TO A WALKER TRACT.
 72. A CURVE TO THE RIGHT HAVING A RADIUS OF 272.79 FEET TO A WALKER TRACT.
 73. A CURVE TO THE LEFT HAVING A RADIUS OF 272.79 FEET TO A WALKER TRACT.
 74. A CURVE TO THE RIGHT HAVING A RADIUS OF 272.79 FEET TO A WALKER TRACT.
 75. A CURVE TO THE LEFT HAVING A RADIUS OF 272.79 FEET TO A WALKER TRACT.
 76. A CURVE TO THE RIGHT HAVING A RADIUS OF 272.79 FEET TO A WALKER TRACT.
 77. A CURVE TO THE LEFT HAVING A RADIUS OF 272.79 FEET TO A WALKER TRACT.
 78. A CURVE TO THE RIGHT HAVING A RADIUS OF 272.79 FEET TO A WALKER TRACT.
 79. A CURVE TO THE LEFT HAVING A RADIUS OF 272.79 FEET TO A WALKER TRACT.
 80. A CURVE TO THE RIGHT HAVING A RADIUS OF 272.79 FEET TO A WALKER TRACT.
 81. A CURVE TO THE LEFT HAVING A RADIUS OF 272.79 FEET TO A WALKER TRACT.
 82. A CURVE TO THE RIGHT HAVING A RADIUS OF 272.79 FEET TO A WALKER TRACT.
 83. A CURVE TO THE LEFT HAVING A RADIUS OF 272.79 FEET TO A WALKER TRACT.
 84. A CURVE TO THE RIGHT HAVING A RADIUS OF 272.79 FEET TO A WALKER TRACT.
 85. A CURVE TO THE LEFT HAVING A RADIUS OF 272.79 FEET TO A WALKER TRACT.
 86. A CURVE TO THE RIGHT HAVING A RADIUS OF 272.79 FEET TO A WALKER TRACT.
 87. A CURVE TO THE LEFT HAVING A RADIUS OF 272.79 FEET TO A WALKER TRACT.
 88. A CURVE TO THE RIGHT HAVING A RADIUS OF 272.79 FEET TO A WALKER TRACT.
 89. A CURVE TO THE LEFT HAVING A RADIUS OF 272.79 FEET TO A WALKER TRACT.
 90. A CURVE TO THE RIGHT HAVING A RADIUS OF 272.79 FEET TO A WALKER TRACT.
 91. A CURVE TO THE LEFT HAVING A RADIUS OF 272.79 FEET TO A WALKER TRACT.
 92. A CURVE TO THE RIGHT HAVING A RADIUS OF 272.79 FEET TO A WALKER TRACT.
 93. A CURVE TO THE LEFT HAVING A RADIUS OF 272.79 FEET TO A WALKER TRACT.
 94. A CURVE TO THE RIGHT HAVING A RADIUS OF 272.79 FEET TO A WALKER TRACT.
 95. A CURVE TO THE LEFT HAVING A RADIUS OF 272.79 FEET TO A WALKER TRACT.
 96. A CURVE TO THE RIGHT HAVING A RADIUS OF 272.79 FEET TO A WALKER TRACT.
 97. A CURVE TO THE LEFT HAVING A RADIUS OF 272.79 FEET TO A WALKER TRACT.
 98. A CURVE TO THE RIGHT HAVING A RADIUS OF 272.79 FEET TO A WALKER TRACT.
 99. A CURVE TO THE LEFT HAVING A RADIUS OF 272.79 FEET TO A WALKER TRACT.
 100. A CURVE TO THE RIGHT HAVING A RADIUS OF 272.79 FEET TO A WALKER TRACT.