



5905 CHARLEIGH CIR

Frederick, MD 21703



Associate Broker, Team Leader, GRI
301-514-6163 (direct) • 301-698-5005 (broker)
bobbiprescott@gmail.com
www.bobbiprescott.com



4 beds



3 1/2 baths

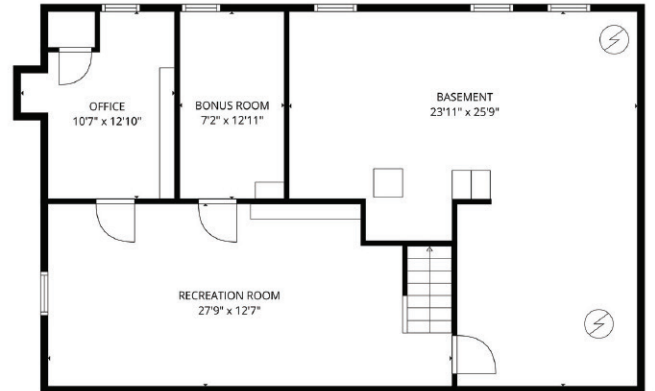
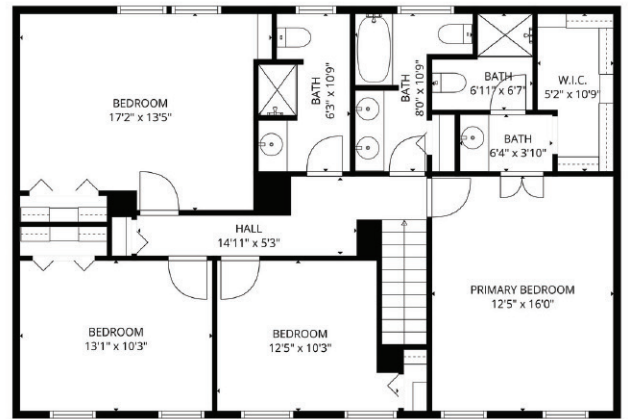
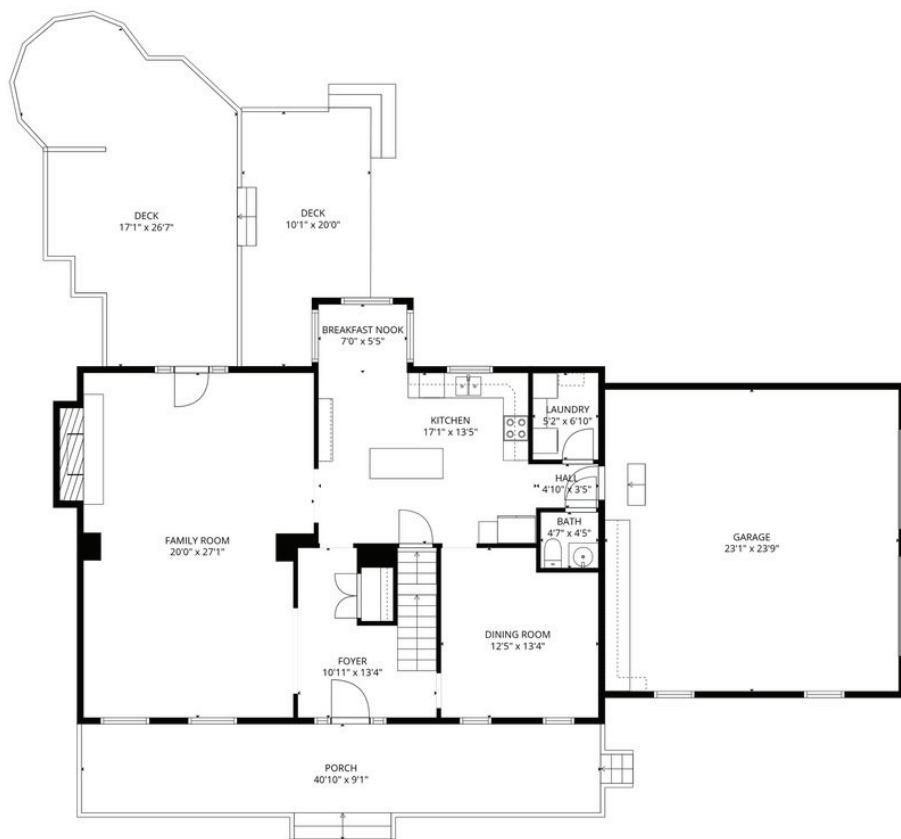


2,952 sq ft



Year Built: 1979





Grow, Gather, and Live Beautifully • All on Over an Acre

This home is situated on a peaceful cul-de-sac in the serene countryside of southern Frederick County—perfect for commuters and just minutes from downtown, with no city taxes. The lot backs to open farmland, offering breathtaking sunrises and stunning views of Sugarloaf Mountain. The charming front porch, beautiful gardens, large rear deck, and expansive flat yard (just over an acre) create an idyllic outdoor retreat. One of the sellers' favorite features has always been the fully fenced garden with ten raised beds, along with a mature grapevine and productive pear tree—offering a rare opportunity to enjoy your own homegrown harvest season after season. A convenient storage shed is ideally positioned nearby, making it easy to keep tools and supplies right where you need them. Inside, you'll find hardwood floors, a spacious kitchen with ample counter space, an expansive family room, first-floor laundry, and a convenient half bath. Upstairs offers four generously sized bedrooms and three full baths, providing plenty of room to spread out. The finished basement features a rec room, flexible office space, and abundant storage. A side-load garage complements the 2,352 square feet above grade, plus approximately 600 finished square feet below. Vinyl replacement windows by Simonton, a roof replaced prior to 2016 (before solar panel installation), a hot water heater (2021), water tank and conditioner (2022), a 2024 HVAC system, solar panels, and a cozy wood stove insert in the fireplace all contribute to comfort and efficiency. Lovingly maintained and ready for its next chapter, this is the kind of home that offers both everyday ease and a setting you simply can't recreate.