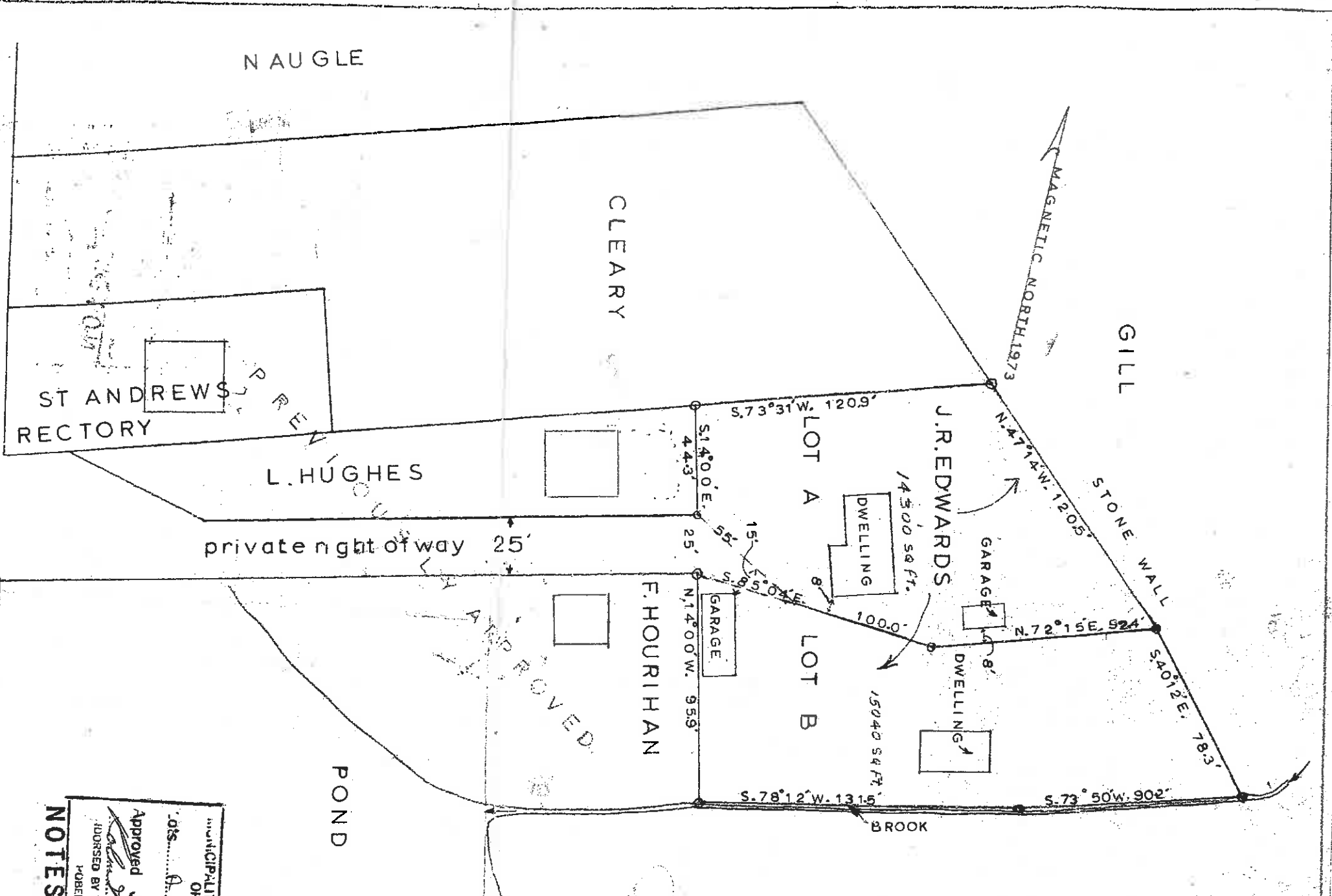


SITE PLAN 1:50,000



MUNICIPALITY OF THE COUNTY OF HALIFAX  
 Ats. *Robert E. Gough*  
 Approved JUL 30 1973  
 ENDORSED BY DEVELOPMENT OFFICER  
 ROBERT E. GOUGH

NOTES: Transfer by deed only.



I certify that this plan accurately shows the manner in which the land hereon depicted has been surveyed (and subdivided) by me and that the said plan is prepared in accordance with the provisions of the Registry Act.

Dated this *26<sup>th</sup>* day of *May* A.D., 1973.

*H.K. Wedlock*  
 Provincial Land Surveyor

SUBDIVISION PLAN OF THE J.R. EDWARDS LANDS  
 EASTERN PASSAGE, HALIFAX CO, N.S.  
 LOT A & LOT B  
 scale: 1" = 40'  
 plan & survey by H.K. Wedlock N.S.L.S.

RECEIVED  
 HALIFAX COUNTY  
 MAY 29 1973  
 SHORE ROAD EASTERN PASSAGE 66  
 PLANNING OFFICE

12176

16X