



3938 CHERRY LN

Jefferson, MD 21755



Bobbi Prescott
REMAX
RESULTS

Associate Broker, Team Leader, GRI
301-514-6163 (direct) • 301-698-5005 (broker)
bobbiprescott@gmail.com
www.bobbiprescott.com





Panoramic Views of the Middletown Valley

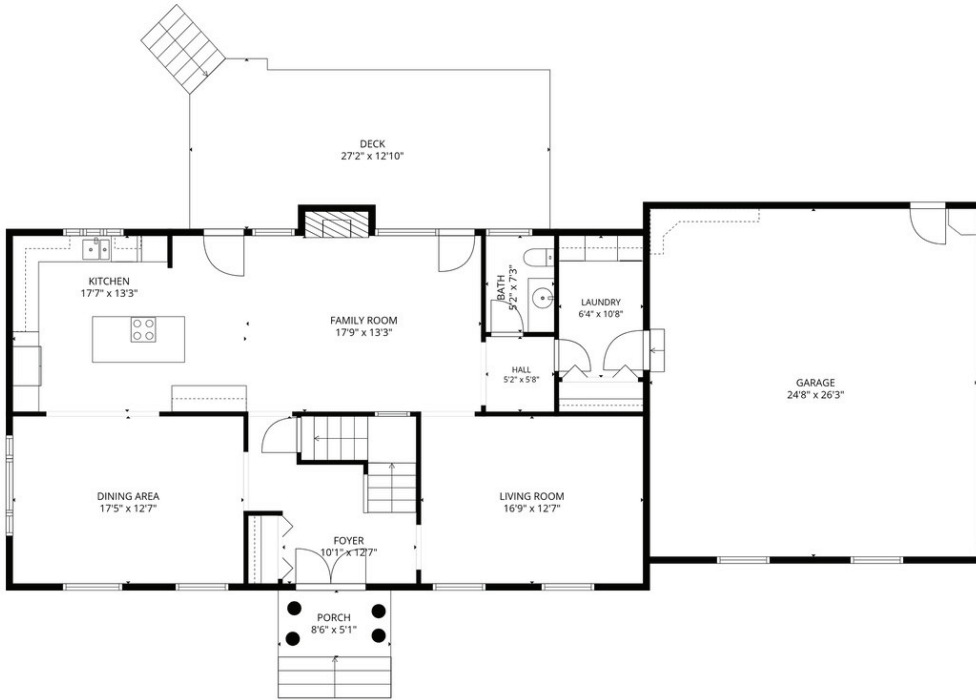
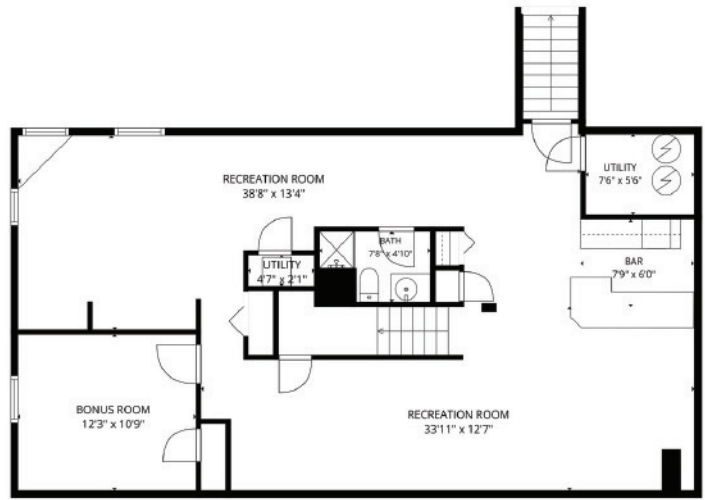
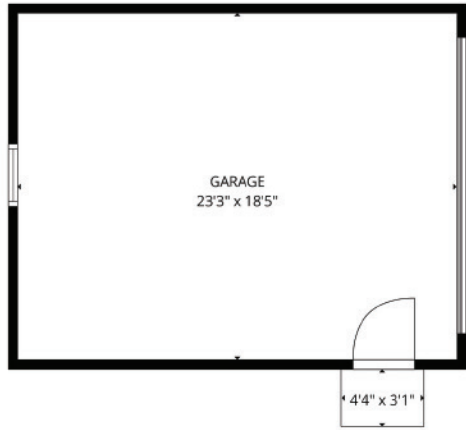
Set on 1.3 picturesque acres in the heart of the Middletown's countryside, 3938 Cherry Lane presents a rare opportunity to experience refined living surrounded by breathtaking natural beauty. Surrounded by sprawling farmland with sweeping panoramic views of the mountains and Middletown Valley, this exceptional colonial offers an unmatched sense of privacy, tranquility, and timelessness. From vibrant sunsets to community fireworks, the scenery becomes part of everyday life — best enjoyed from the spacious rear deck overlooking the peaceful landscape. Boasting over 3725 finished square feet, the property offers a seamless blend of classic design and comfortable living. The main level offers a

dramatic two-story foyer welcoming you into the home, where the soaring family room is anchored by a wood-burning fireplace insert, framed by two full-glass French doors that perfectly capture the surrounding mountain and farmland views. Formal living and dining rooms create ideal spaces for entertaining, while the spacious kitchen features granite countertops, a seven-foot center island with seating, stainless steel appliances, cooktop, and double wall ovens — designed to accommodate both everyday living and memorable gatherings. A conveniently located half bath adds functionality for guests, while the mudroom and laundry combination offers practical everyday

Set on 1.3 Scenic Acres

organization with ample space for storage, laundry, and easy access for busy households. The upstairs features three extra-large bedrooms, including a primary suite complete with a walk-in closet and en suite bath. An additional finished bonus room above the attached two-car garage offers exceptional versatility, ideal for a home office, guest retreat, fitness studio, or creative space. In addition to the oversized attached two-car garage, the property also includes a detached two-car garage, offering ample space for vehicles, hobbies, or additional storage. The fully finished lower level further enhances the home's impressive living space, featuring a large recreation area, den, wet bar, full bath, storage area, and walk-up access to the

backyard. While the interior is exceptional, the outside is where the real show begins. The beautifully landscaped yard surrounds an inviting in-ground saltwater pool and relaxing hot tub, creating a private outdoor oasis perfectly suited for both quiet evenings and unforgettable entertaining. Beyond the property, neighboring horses grazing peacefully in the surrounding pastures add to the idyllic country setting, while the sweeping countryside views provide a stunning backdrop in every season. Peaceful, private, and impeccably maintained, 3938 Cherry Lane offers the rare combination of scenic beauty, expansive living spaces, and exceptional outdoor living— all within the highly sought-after Middletown school district.



Quick Facts



3 Beds



3 1/2 Baths



Single Family



Colonial



Year Built: 1988



MLS: MDR2082232



3,725 sq ft



Lot 1.30 acres



Attached Garage, Detached Garage & Driveway



Basement, Garage & Shed



Parcel: 165



Property Tax: \$6,152.10/year