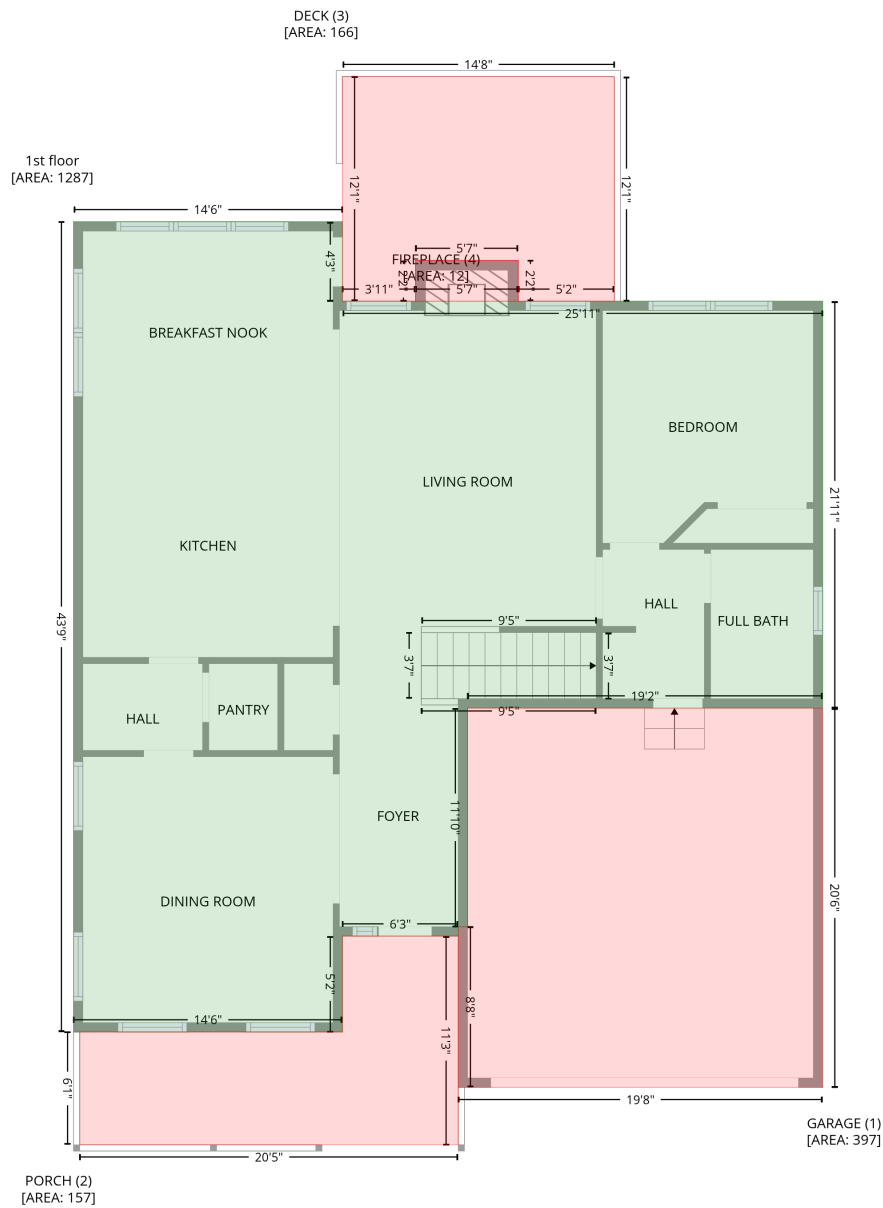


# 716 Lakeview Drive, McAdenville, Gaston County, North Carolina, United States, 28101

Gross Living Area: 2880 sq. ft

## Level 1



Space	Area (sq. ft)	Calculation
1st floor (Living area)	1287	Coordinate Polygon Area Algorithm using inches $-((191.9 + 191.9) * (141.7 - 193.2) + (191.9 + 503) * (193.2 - 193.2) + (503 + 503) * (193.2 - 456.7) + (503 + 272.9) * (456.7 - 456.7) + (272.9 + 272.9) * (456.7 - 598.3) + (272.9 + 266.9) * (598.3 - 598.3) + (266.9 + 266.9) * (598.3 - 604.3) + (266.9 + 191.9) * (604.3 - 604.3) + (191.9 + 191.9) * (604.3 - 666.4) + (191.9 + 17.7) * (666.4 - 666.4) + (17.7 + 17.7) * (666.4 - 141.7) + (17.7 + 191.9) * (141.7 - 141.7)) * 0.5 * 0.00694$

# 716 Lakeview Drive, McAdenville, Gaston County, North Carolina, United States, 28101

Gross Living Area: 2880 sq. ft

## Level 1

Space	Area (sq. ft)	Calculation <small>Coordinate Polygon Area Algorithm using inches</small>
GARAGE (Non-living area)	397	$-\left((503 + 503) * (456.7 - 702.3) + (503 + 266.9) * (702.3 - 702.3) + (266.9 + 266.9) * (702.3 - 598.3) + (266.9 + 272.9) * (598.3 - 598.3) + (272.9 + 272.9) * (598.3 - 456.7) + (272.9 + 503) * (456.7 - 456.7)\right) * 0.5 * 0.00694$
PORCH (Non-living area)	157	$-\left((266.9 + 266.9) * (604.3 - 739.5) + (266.9 + 21.7) * (739.5 - 739.5) + (21.7 + 21.7) * (739.5 - 666.4) + (21.7 + 191.9) * (666.4 - 666.4) + (191.9 + 191.9) * (666.4 - 604.3) + (191.9 + 266.9) * (604.3 - 604.3)\right) * 0.5 * 0.00694$
DECK (Non-living area)	166	$-\left((368.1 + 368.1) * (47.7 - 193.2) + (368.1 + 305.8) * (193.2 - 193.2) + (305.8 + 305.8) * (193.2 - 166.8) + (305.8 + 239.3) * (166.8 - 166.8) + (239.3 + 239.3) * (166.8 - 193.2) + (239.3 + 191.9) * (193.2 - 193.2) + (191.9 + 191.9) * (193.2 - 47.7) + (191.9 + 368.1) * (47.7 - 47.7)\right) * 0.5 * 0.00694$
FIREPLACE (Non-living area)	12	$-\left((305.8 + 305.8) * (166.8 - 193.2) + (305.8 + 239.3) * (193.2 - 193.2) + (239.3 + 239.3) * (193.2 - 166.8) + (239.3 + 305.8) * (166.8 - 166.8)\right) * 0.5 * 0.00694$

# 716 Lakeview Drive, McAdenville, Gaston County, North Carolina, United States, 28101

Gross Living Area: 2880 sq. ft

## Level 2

2nd floor  
[AREA: 1593]



Space	Area (sq. ft)	Calculation <small>Coordinate Polygon Area Algorithm using inches</small>
2nd floor (Living area)	1593	$-\left((503 + 503) * (193.2 - 653.9) + (503 + 409.7) * (653.9 - 653.9) + (409.7 + 409.7) * (653.9 - 702.3) + (409.7 + 356.3) * (702.3 - 702.3) + (356.3 + 356.3) * (702.3 - 653.9) + (356.3 + 272.9) * (653.9 - 653.9) + (272.9 + 272.9) * (653.9 - 666.4) + (272.9 + 17.7) * (666.4 - 666.4) + (17.7 + 17.7) * (666.4 - 193.2) + (17.7 + 503) * (193.2 - 193.2)\right) * 0.5 * 0.00694$