

Plan # 3908 - sheet # 1 of 2  
 Laurel Acres Subdivision  
 Land of E. Leo Kanteres - Bedford NH



APPROVED BY THE BEDFORD PLANNING BOARD ON September 16, 1968  
 Certified by Chairman [Signature]  
 and Secretary [Signature]

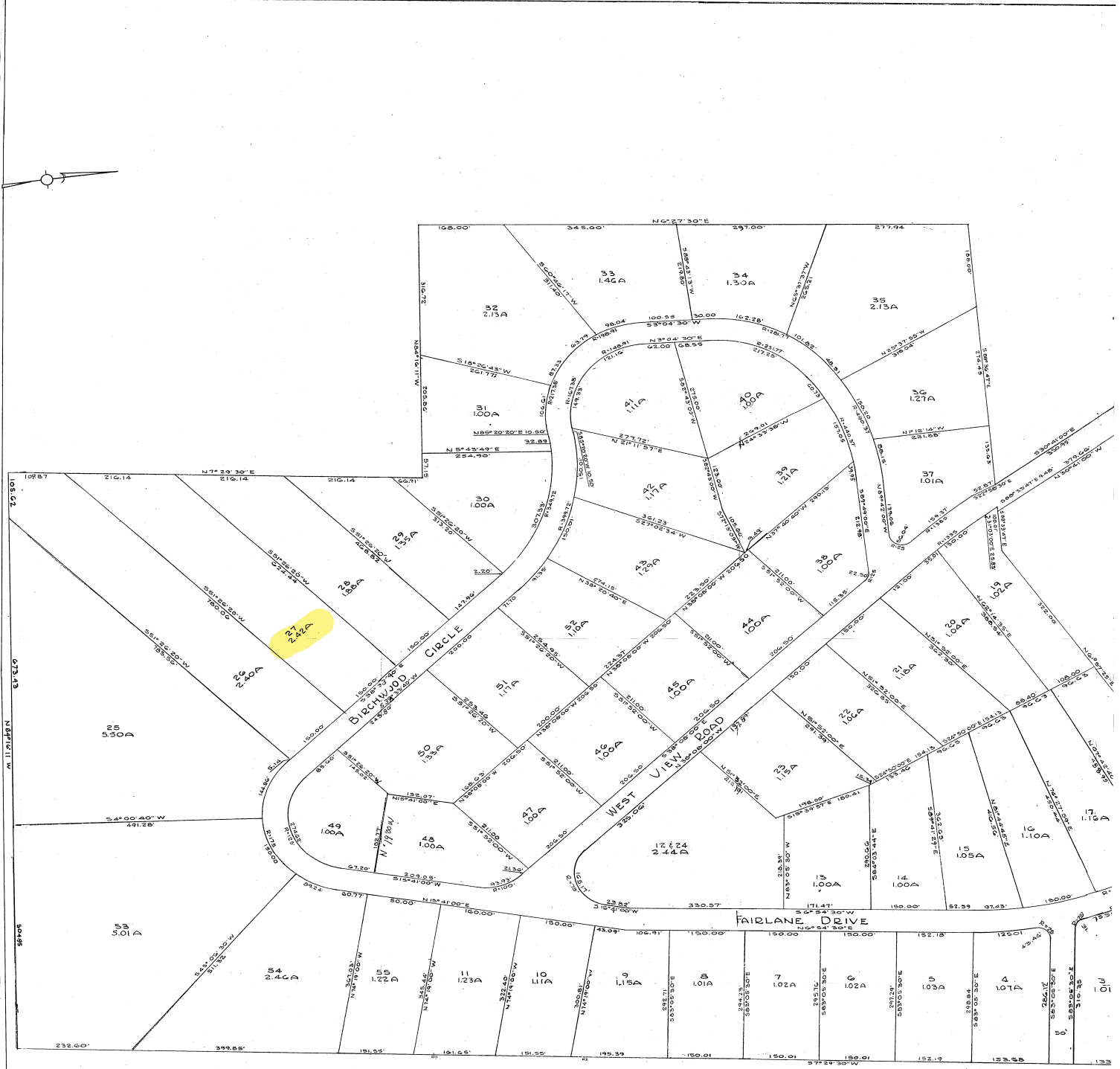
NOTE: Reference is made to four plans in the office of G.C. Benjamin, P.E. numbered 359-13, 359-13A, 362-16, & 366-14, from which this plan has been derived.

Plan # 3908

HILLSBOROUGH COUNTY  
 REGISTRY OF DEEDS  
 Received at 11:30 AM  
 SEP 23 1968  
 Recorded Vol. \_\_\_\_\_ Page \_\_\_\_\_  
 Examined \_\_\_\_\_ Register.

LAUREL ACRES SUBDIVISION BEDFORD NEW HAMPSHIRE	
Land of E. Leo Kanteres	
GEORGE C. BENJAMIN, P. E. 118 STARK ST. MANCHESTER N. H.	
PROJECT NO.	SHEET NO.
REVISIONS	SCALE: 1" = 400' Feet DATE: March, 1968

Plan # 3908 - sheet # 2 of 2  
 Laurel Acres - Land of E. Leo Kanteres  
 Bedford NH



APPROVED BY THE BEDFORD PLANNING BOARD ON September 16, 1967  
 Certified by Chairman James W. Van Loan and Secretary Clara Murphy

NOTE: Reference is made to the office of G.C. Benjamin 600 N. 13 Street, Bedford, N.H. 0322 which this plan has been filed.

Plan # 3