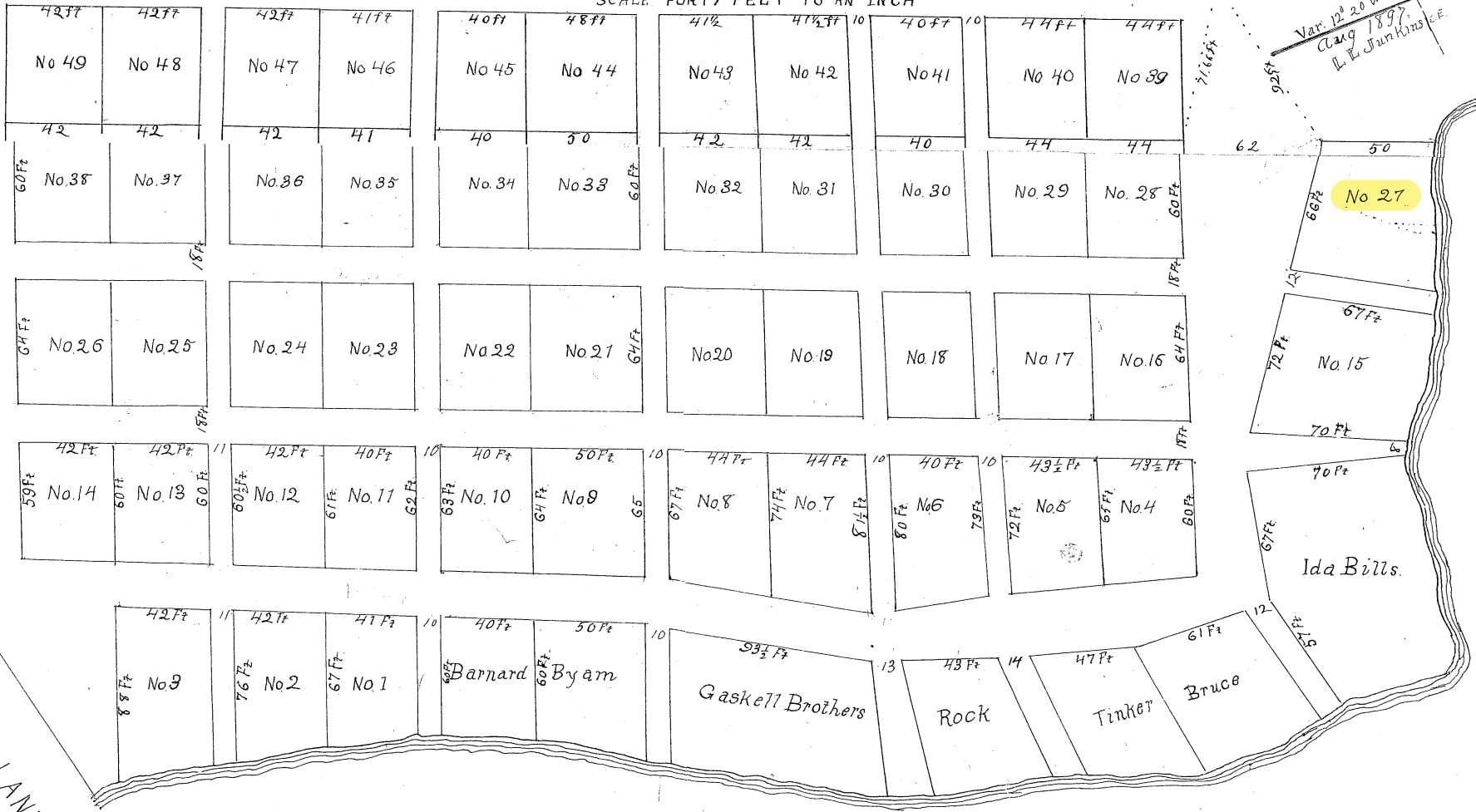


L. FULLER'S LOTS

SCALE FORTY FEET TO AN INCH



229-2

BABOOSIC POND

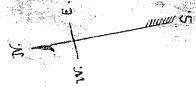
Filed Sept 9, 1897

No 229

James Henry Page

229

229-3



LAND

MARDEN AND SPALDING

MT. VERNON, N.H.

PROSPECT HILL.

*Asst. Surveyors
Civil Engineers
April 25, 1890.*

