

PROTECTIVE COVENANTS

LOTS SHOWN ON THIS PLAN ARE SUBJECT TO THE FOLLOWING RESTRICTIONS WHICH ARE COVENANTS RUNNING WITH THE LAND...

- 1. LOTS SHOWN SHALL BE FOR SINGLE FAMILY PRIVATE DWELLINGS WITH NO LOT OR STRUCTURE BEING USED FOR ANY TYPE OF BUSINESS OR COMMERCIAL ENTERPRISE.
2. NO LOT SHALL BE SUBDIVIDED.
3. NO PRIVATE DWELLING SHALL BE NEARER A FRONTAGE ROAD THAN 3' L., NOR NEARER THAN 40 FEET FROM A REAR LOT LINE...

A TOPGON GTS-28 TOTAL STATION

was used to obtain the linear and angular measurements used in the preparation of this plat.

The field data upon which this plat is based has a closure precision of one foot in 157,000 feet and an angular error of 3" per angle point and was adjusted using the least squares rule.

This survey has been calculated for closure and is found to be accurate within one foot in 157,000 feet.

Table with columns: CURVE DATA, CURVE NO, DELTA, T, R, S, L. Contains data for three curves.

FLOOD CHART table with columns: LOT NO, TOTAL AREA, IN. FP, OUT. FP. Shows data for lots 5-A and 6-A.

GWINNETT COUNTY DEPARTMENT OF PLANNING AND DEVELOPMENT. THIS PLAT HAS BEEN SUBMITTED TO AND REVIEWED BY THE DEPARTMENT OF PLANNING AND DEVELOPMENT AND IS APPROVED FOR DEVELOPMENT...

STATE OF GEORGIA GWINNETT COUNTY. THE OWNER OF THE LAND SHOWN ON THIS PLAT AND WHOSE NAME IS SUBSCRIBED HERETO...

SURVEYORS CERTIFICATE. I HEREBY CERTIFY THAT THE PLAN SHOWN AND DESCRIBED HEREON IS A TRUE AND CORRECT SURVEY MADE ON THE GROUND UNDER MY SUPERVISION...

CERTIFICATION OF COUNTY ENGINEERING DEPT. THIS PLAT HAS BEEN SUBMITTED TO AND REVIEWED BY THE COUNTY ENGINEERING DEPT. AND IS APPROVED...

CERTIFICATION BY GWINNETT COUNTY HEALTH DEPARTMENT. THE LOTS SHOWN HEREON HAVE BEEN REVIEWED BY THE GWINNETT COUNTY HEALTH DEPARTMENT...

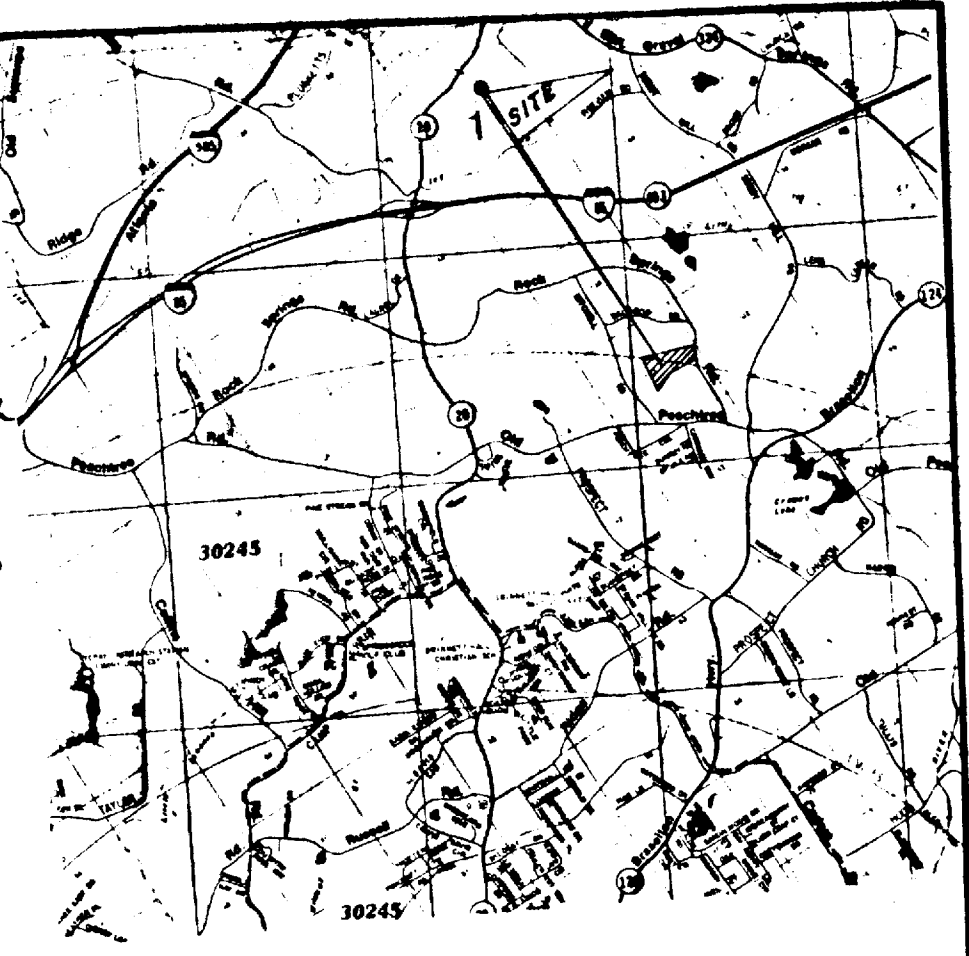
NOTE. 1/2" IRON PINS MARK ALL LOT CORNERS. 2" MIN 12" RADIUS ON ALL STREET R/W INTERSECTIONS. 3" TOTAL AREA = 28,667...

CERTIFICATION BY WATER ENGINEER. THIS PLAN AND DESIGN OF THE WATER DISTRIBUTION SYSTEMS HAVE BEEN SUBMITTED TO AND REVIEWED BY THE WATER ENGINEER...

APPROVAL OF THE COMMISSIONERS OF ROADS AND HIGHWAYS OR MUNICIPAL GOVERNING AUTHORITY OF GWINNETT COUNTY, GEORGIA. THIS PLAT HAS BEEN SUBMITTED TO AND CONSIDERED BY THE BOARD OF COUNTY COMMISSIONERS...

PUBLIC NOTICE DRAINAGE. NOTICE: GWINNETT COUNTY ASSUMES NO RESPONSIBILITY FOR OVERFLOW OR EROSION OF NATURAL OR ARTIFICIAL DRAINS BEYOND THE EXTENT OF THE STREET RIGHT-OF-WAY...

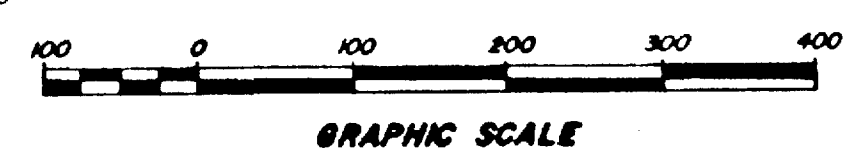
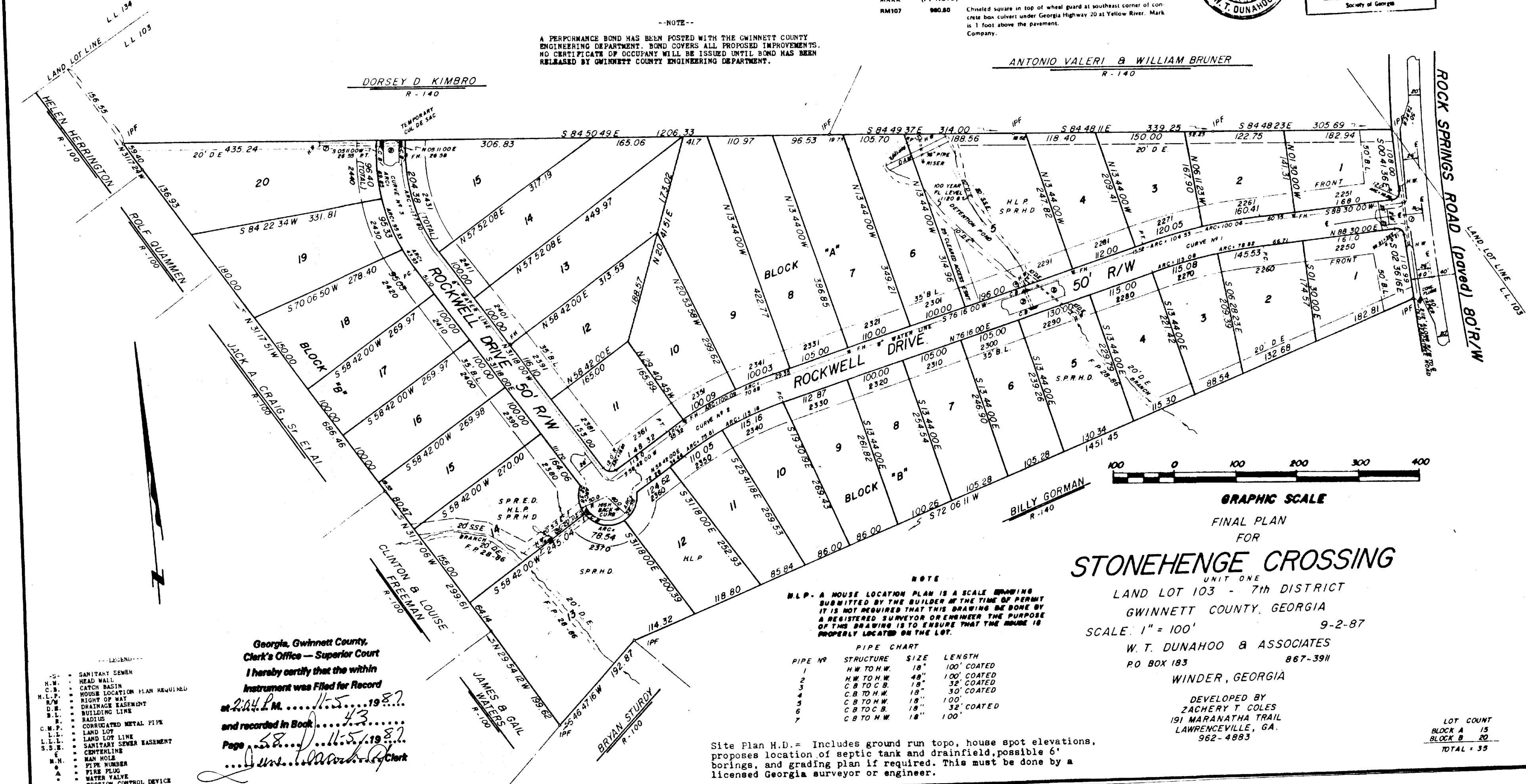
WATER POLLUTION CONTROL DEPARTMENT OF GWINNETT COUNTY, GA. APPROVED THIS 30 DAY OF Oct 1987 BY: [Signature]



In my Opinion this is a correct representation of the land stated and has been prepared in conformity with the minimum standards and requirements of law.

REFERENCE MARK table with columns: MARK, ELEVATION (FT NGVD), DESCRIPTION OF LOCATION. Includes entry for RM107 at 980.80.

NOTE. A PERFORMANCE BOND HAS BEEN POSTED WITH THE GWINNETT COUNTY ENGINEERING DEPARTMENT. BOND COVERS ALL PROPOSED IMPROVEMENTS...



FINAL PLAN FOR STONEHENGE CROSSING UNIT ONE

LAND LOT 103 - 7th DISTRICT GWINNETT COUNTY, GEORGIA. SCALE: 1" = 100'. W.T. DUNAHOO & ASSOCIATES, PO BOX 183, WINDER, GEORGIA.

PIPE CHART table with columns: PIPE NO, STRUCTURE, SIZE, LENGTH. Lists various pipe sizes and lengths for the project.

Site Plan H.D. = Includes ground run topo, house spot elevations, proposes location of septic tank and drainfield, possible 6' borings, and grading plan if required.

Georgia, Gwinnett County, Clerk's Office - Superior Court. I hereby certify that the within instrument was filed for record at 2:04 P.M. 11-5-1987 and recorded in Book 43 Page 38 D 11-5-1987.

- Legend: S.S. - SANITARY SEWER, H.M. - HEAD WALL, C.B. - CATCH BASIN, H.L.P. - HOUSE LOCATION PLAN REQUIRED, R/W - RIGHT OF WAY, D.E. - DRAINAGE EASEMENT, B.L. - BUILDING LINE, R - RADII, C.M.P. - CORRUGATED METAL PIPE, L.L. - LAND LOT, L.L.L. - LAND LOT LINE, S.S.E. - SANITARY SEWER EASEMENT, C. - CENTERLINE, H.N. - HOLE, H.N. - HOLE, P.F. - PIPE NUMBER, A - FIRE PLUG, W.V. - WATER VALVE, E.C.D. - EROSION CONTROL DEVICE, I.P.S. - IRON PIN SET, I.P.F. - IRON PIN FOUND.

LOT COUNT: BLOCK A 15, BLOCK B 20, TOTAL 35.