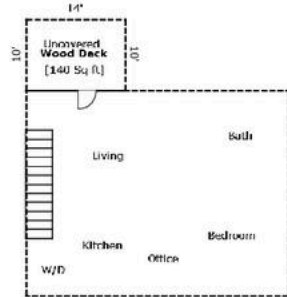
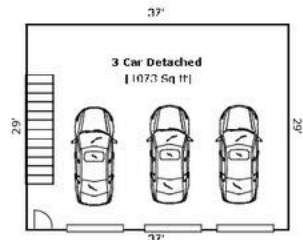
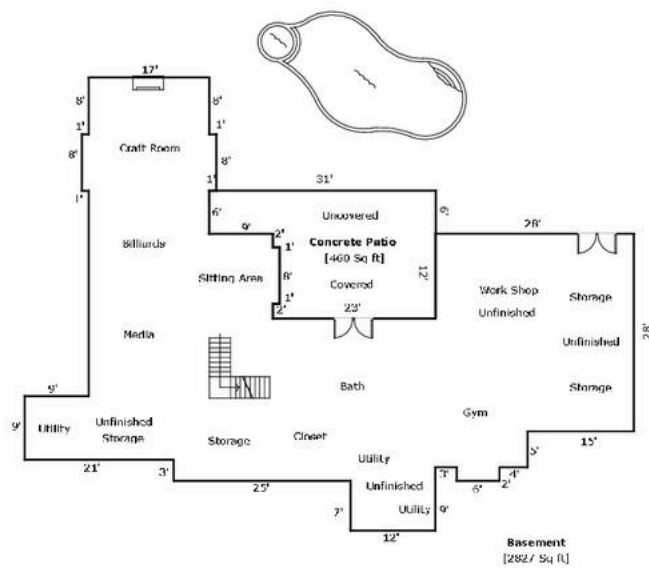
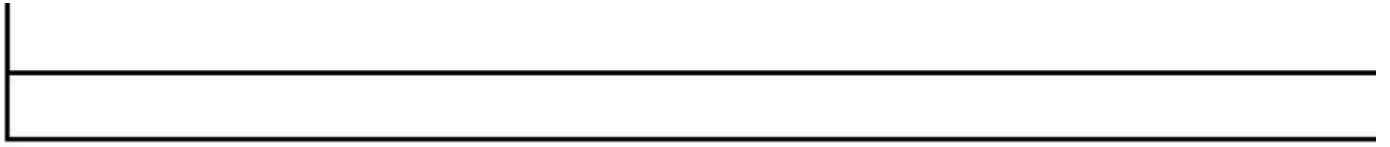


Form SKT.BLDSKI — "WinTOTAL" appraisal software by a la mode, inc. — 1-800-ALAMODE



Form SKT.BLDSKI — "WinTOTAL" appraisal software by a la mode, inc. — 1-800-ALAMODE

Living Area		Calculation Details	
First Floor	2925 Sq ft	6 × 2 =	
		8 × 1 =	
		19 × 8 =	1
		21 × 8 =	1
		9 × 10 =	
		12 × 7 =	
		29 × 16 =	4
		34 × 13 =	4
		23 × 23 =	5
		17 × 6 =	1
		26 × 32 =	8
		3 × 14 =	
Second Floor	1077 Sq ft	6 × 1 =	
		6 × 1 =	
		17 × 14 =	2
		13 × 10 =	1
		12 × 9.5 =	1
		9.5 × 11 =	10
		33 × 14.5 =	47
Total Living Area (Rounded):	4002 Sq ft		
Non-living Area			
Porch	150 Sq ft	9 × 10 =	
		4 × 15 =	
Wood Deck	155.5 Sq ft	19 × 7.5 =	14
		1 × 5 =	
		1 × 8 =	
Open Porch	255 Sq ft	10 × 8 =	
		7 × 25 =	1
Wood Deck	460 Sq ft	18 × 22 =	3
		6 × 9 =	
		1 × 8 =	
		2 × 1 =	
Wood Deck	140 Sq ft	14 × 10 =	1
Concrete Patio	460 Sq ft	18 × 22 =	3
		6 × 9 =	
		1 × 8 =	
		2 × 1 =	
3 Car Detached	1073 Sq ft	29 × 37 =	10
Basement	2827 Sq ft	8 × 1 =	
		6 × 2 =	
		8 × 1 =	
		8 × 1 =	
		9 × 9 =	
		54 × 12 =	6
		57 × 5 =	2
		35 × 9 =	3
		23 × 11 =	2
		30 × 12 =	3
		33 × 13 =	4
		28 × 15 =	4
Area Above Garage	1073 Sq ft	29 × 37 =	10



Form SKT.BLDSKI — "WinTOTAL" appraisal software by a la mode, inc. — 1-800-ALAMODE